



Karuah East Quarry

Monthly Environmental Monitoring Report

January 2017

Table of Contents

1. INTRODUCTION	3
2. DUST MONITORING.....	3
2.1 Dust Deposition Results	4
2.2 High Volume Air Sampling Results	5
2.3 Dust Monitoring Results Summary.....	6
3. BLAST MONITORING RESULTS	6
4. NOISE MONITORING	7
4.1 Operator Attended Monitoring Results	7
4.2 Unattended Continuous Monitoring Results	8
5. SURFACE WATER MONITORING	8
5.1 Discharge Monitoring Results	9
5.2 Monthly Monitoring Results	9
6. GROUNDWATER MONITORING	11
6.1 Groundwater Levels	11
6.2 Groundwater Quality	11

TABLES

Table 1	Licence Information	3
Table 2	PA 09_0175 Long term impact assessment criteria for particulate matter	3
Table 3	PA 09_0175 Short term impact assessment criteria for particulate matter	3
Table 4	PA 09_0175 Long term impact assessment criteria for Deposited Dust	3
Table 5	Air Quality Monitoring Locations for Karuah East Quarry	4
Table 6	Insoluble Solids (g/m ² /month) for the Year to Date	4
Table 7	High Volume Air Sampling (µg/m ³) results	5
Table 8	Blasting criteria	6
Table 9	Blast Monitoring Results.....	6
Table 10	Operational Noise Criteria (dB(A) LA _{eq(15min)})	7
Table 11	Noise Monitoring Program	7
Table 12	Operator Attended Noise Survey Results	8
Table 13	Unattended Continuous Noise Monitoring Results	8
Table 14	Surface Water Discharge Monitoring Criteria.....	9
Table 15	Surface Water Discharge Monitoring Results.....	9
Table 16	Surface Water Monthly Monitoring Results	10
Table 17	Groundwater Monitoring Program	11
Table 18	Groundwater Levels	11

1. INTRODUCTION

This report has been completed to meet the requirements of Section 66(6) of the *Protection of the Environment Operations Act 1997* and the NSW Environmental Protection Authority's (EPA) Requirements for Publishing Pollution Monitoring Data (October 2013). This report summarises the required monitoring data under Environmental Protection Licence (EPL) 20611 for the Karuah East Quarry. This report also includes some monitoring requirements under Project Approval 09_0175.

A summary of the environmental data for January 2017 is covered in this report.

A summary of the licence information is provided in **Table 1** below.

Table 1 Licence Information

Environmental Protection Licence Number	20611
Licensee's Name	Karuah East Quarry Pty Ltd
Licensee's Address	Postal Address: PO Box 3284 Thornton NSW 2322 Quarry Location: Lot 13 DP1024564 Pacific Highway Karuah NSW 2324
Link to full Licence on the EPA Website	EPL 20611

2. DUST MONITORING

There are no specific dust criteria listed in the EPL, but the dust criteria (Tables 2-4) are listed in Schedule 3 Condition 13 of Project Approval 09_0175.

Table 2 PA 09_0175 Long term impact assessment criteria for particulate matter

Pollutant	Averaging period	⁴ Criterion
Total suspended particulates (TSP)	Annual	¹ 90 µg/m ³
Particulate matter < 10 µm (PM10)	Annual	¹ 30 µg/m ³

Table 3 PA 09_0175 Short term impact assessment criteria for particulate matter

Pollutant	Averaging period	⁴ Criterion
Particulate matter < 10 µm (PM10)	Daily	¹ 50 µg/m ³

Table 4 PA 09_0175 Long term impact assessment criteria for Deposited Dust

Pollutant	Averaging period	Maximum increase in deposited dust level	Maximum total deposited dust level
³ Deposited dust	Annual	² 2 g/m ² /month	¹ 4 g/m ² /month

Notes to Tables 2-4:

¹ Total impact (ie incremental increase in concentrations due to the project plus background concentrations due

to all other sources).

² Incremental impact (ie incremental increase in concentrations due to the project on its own).

³ **Deposited dust** is to be assessed as insoluble solids as defined by Standards Australia, AS/NZS 3580.10.1:2003: Methods for Sampling and Analysis of Ambient Air – Determination of Particulate Matter – Deposited Matter – Gravimetric Method.

⁴ Excludes extraordinary events such as bushfires, prescribed burning, dust storms, sea fog, fire, incidents, illegal activities or any other activity agreed by the Secretary in consultation with EPA.

Dust deposition and TSP/PM₁₀ monitoring is undertaken at Karuah East Quarry at the locations listed in **Table 5**.

Table 5 Air Quality Monitoring Locations for Karuah East Quarry

Site ID	Location	Address	GPS Coordinates
DDG 1	South-East of Karuah East Quarry	5760 Pacific Hwy, Karuah NSW 2324	32°38'04"S 151°59'58"E
DDG 2	South-East of Karuah East Quarry	5770 Pacific Hwy, Karuah NSW 2324	32°38'02"S 152°00'09"E
DDG 3	East of Karuah East Quarry	DP 1024341, Karuah	32°37'57"S 151°59'41"E
DDG 4	West of Karuah East Quarry	21 Halloran Rd, North Arm Cove NSW 2324	32° 37' 30.87"S 152°01'10.18"E
DDG 5	West of Karuah East Quarry	Lot 21/DP 1024341 Karuah NSW 2324	32° 37' 55.33"S 152°00'2.74"E
HVAS (TSP/PM10)	South-East of Karuah East Quarry	5770 Pacific Hwy, Karuah NSW 2324	32°38'03"S 152°00'09"E

2.1 Dust Deposition Results

Dust deposition monitoring has been undertaken. Dust monitoring commenced at site DDG5 on 31 August 2016. Dust deposition results for January 2017 and the year to date are shown in **Table 6**.

Table 6 Insoluble Solids (g/m²/month) for the Year to Date

Date	DDG 1	DDG 2	DDG 3	DDG 4	DDG 5
7/9/2015 to 8/10/2015	0.8	0.4	0.3	0.3	-
8/10/2015 to 6/11/2015	1.3	1.2	0.6	0.5	-
6/11/2015 to 8/12/2015	2.1	0.8	0.8	4.1	-
8/12/2015 to 8/1/2016	6.4	0.9	0.6	1.2	-
8/1/2016 to 8/2/2016	1.4	0.9	1.1	1.2	-
8/2/2016 to 3/3/2016	4.0	0.7	0.6	0.9	-
3/3/2016 to 4/4/2016	3.1	0.3	1.0	2.0	-
4/4/2016 to 6/5/2016	1.5	1.1	0.4	3.2	-
6/5/2016 to 3/6/2016	1.0	0.9	0.7	0.4	-
3/6/2016 to 4/7/2016	0.4	1.6	0.5	0.3	-
4/7/2016 to 1/8/2016	1.4	0.7	0.3	0.5	-
1/8/2016 to 31/8/2016	2.7	3.0	0.8	0.7	-
31/8/2016 to 28/9/2016	2.1	1.6	0.8	0.8	0.9
28/9/2016 to 26/10/2016	0.8	0.6	0.8	0.5	0.7
26/10/2016 to 23/11/2016	0.7	1.0	1.3	2.3	1.9

23/11/2016 to 21/12/2016	1.3	0.5	0.9	1.0	4.2
21/12/2016 to 18/01/2017	0.4	0.8	0.7	2.5	3.1
¹Rolling Annual Average	1.1	0.9	0.9	1.4	2.2

Note ¹: Rolling Annual Average from the EPL 20611 anniversary date of 26 August.

2.2 High Volume Air Sampling Results

The monthly results for TSP and PM10 are shown in **Table 7**.

Table 7 High Volume Air Sampling ($\mu\text{g}/\text{m}^3$) results

Date	HVAS TSP ($\mu\text{g}/\text{m}^3$)	HVAS PM10 ($\mu\text{g}/\text{m}^3$)
29/04/2016	23	18
05/05/2016	20	18
11/05/2016	17	8
17/05/2016	25	19
23/05/2016	35	20
29/05/2016	11	5
04/06/2016	9	8
10/06/2016	11	4
16/06/2016	10	8
22/06/2016	11	4
28/06/2016	11	6
04/07/2016	20	5
10/07/2016	10	6
16/07/2016	10	8
22/07/2016	14	7
28/07/2016	9	5
03/08/2016	27	14
09/08/2016	11	6
15/08/2016	18	12
21/08/2016	10	5
27/08/2016	9	4
02/09/2016	11	7
08/09/2016	15	8
14/09/2016	11	6
20/09/2016	16	9
26/09/2016	<i>Breakdown</i>	<i>Breakdown</i>
02/10/2016	18	7
08/10/2016	35	21
14/10/2016	12	8
20/10/2016	19	11
26/10/2016	21	12
01/11/2016	19	9
07/11/2016	74	50
13/11/2016	27	14
19/11/2016	40	14
25/11/2016	28	13

01/12/2016	25	12
07/12/2016	16	14
13/12/2016	41	21
19/12/2016	41	23
25/12/2016	19	13
31/12/2016	34	22
06/01/2017	30	14
12/01/2017	42	24
18/01/2017	44	18
24/01/2017	40	21
30/01/2017	34	18
¹ 24hr Max Criteria	N/A	50
Report Average	38.0	19.0
² Rolling Annual Average	27.5	15.4
¹ Annual Average Criteria	90	30

- Note:**
1. Maximum criteria as specified in PA 09_0175
 2. Rolling Annual Average from the EPL 20611 anniversary date of 26 August.

2.3 Dust Monitoring Results Summary

All monitoring results to the end of January 2017 indicate that the Dust Deposition (Insoluble Solids), TSP and PM10 levels recorded were below the project criterion.

3. BLAST MONITORING RESULTS

The conditions stipulated for blasting is referred to in Condition L5 and M7 of EPL 20611 and Schedule 3, Condition 8 of PA 09_0175. Blast monitoring is undertaken at every blast. **Table 8** summarises the blast monitoring criteria.

Table 8 Blasting criteria

Location	Airblast overpressure (dB(Lin Peak))	Ground vibration (mm/s)	Allowable exceedance
Any residence on privately-owned land, or any public infrastructure	120	10	0%
	115	5	5% of the total number of blasts over a period of 12 months

Two blasts were undertaken in January 2017. Both blasts were undertaken for construction purposes. Summary of the blasting results is shown in **Table 9**.

Table 9 Blast Monitoring Results

Date and time	Overpressure and vibration	Monitor 1 (Front Gate)	Monitor 2 (Nearest Residence)
11/01/2017	Overpressure dB(L)	106.4	<i>Below detection limits</i>
12:37	Vibration (mm/s)	1.7	<i>Below detection limits</i>
23/01/2017	Overpressure dB(L)	107.0	97.8
13:18	Vibration (mm/s)	2.53	0.68

As shown in Table 9, the monitoring results for the blasts that were undertaken in January 2017 were below the EPL criteria for ground vibration and overpressure. The blast that took place on 11 January 2017, was below the set minimum trigger levels at Monitor 2. The blast monitoring trigger levels for this blast at Monitor 2 were set at 108 dB(L) for overpressure and 0.37 mm/s for vibration.

4. NOISE MONITORING

Schedule 3 Condition 3 of the Project Approval and Condition L4.1 of the EPL requires Karuah East Quarry to ensure noise generated by the development does not exceed criteria outlined in **Table 10**.

Table 10 Operational Noise Criteria (dB(A) LA_{eq(15min)})

Location	Criteria (¹ day)
Residence on Lot 11 DP 10244564	43
A	40
B	37
G	38
All other residence	35

Note ¹: A day is defined as the period from 7am to 6pm Monday to Saturday and 8am to 6pm Sunday and Public Holidays.

In accordance with Schedule 3 Condition 5 and Condition 7 of the Project Approval and the [Noise Management Plan \(SLR, 2015\)](#) a noise monitoring program has been implemented. Summary of this monitoring program is outlined in **Table 11**.

Table 11 Noise Monitoring Program

Construction Noise Monitoring			
Monitoring Method	¹ Location	Frequency	² Criteria (dB(A) LA _{eq(15min)})
Attended noise monitoring	F	At the commencement of new activities and a min of once per quarter.	54
Attended noise monitoring	G	At the commencement of new activities and a min of once per quarter.	44
Operational Noise Monitoring			
Monitoring Method	¹ Location	Frequency	² Criteria
Attended noise monitoring	F, G	Quarterly	As per Table 10, 12 and 13 Noise MP (SLR, 2015)
Unattended noise monitoring	G	Quarterly	As per Table 10, 12 and 13 Noise MP (SLR, 2015)

Note:

- Appendix 1 illustrates the monitoring locations.
- Criteria is for daytime limits. Daytime is defined as the period from 7am to 6pm Monday to Saturday and 8am to 6pm Sunday and Public Holidays.

4.1 Operator Attended Monitoring Results

The results of the operator attended noise surveys are presented in **Table 12**. Ambient noise levels given in the tables include all noise sources such as traffic, insects, birds, adjacent quarry and Karuah East Quarry. The table provides the following information:

a) Monitoring location and serial number of the noise logger;

- b) Date, start time, Wind velocity (m/s) and Temperature (°C) at the measurement location; and
c) Typical maximum (LA_{max}) and contributed noise levels.

Quarry contributions listed in the tables are from Karuah East Quarry and are stated only when a contribution could be quantified.

Table 12 Operator Attended Noise Survey Results

Location	Date/Start Time/ Weather	Primary Noise Descriptor (dBA re 20 µPa)					Description of Noise Emissions and Typical Maximum Noise Levels (dBA)
		LA _{max}	LA1	LA10	LA90	LA _{eq}	
F Lot 50 DP 103	<u>Attended noise monitoring was not conducted during January 2017</u>						
G Lot 3 DP 1032636							

4.2 Unattended Continuous Monitoring Results

Table 13 Unattended Continuous Noise Monitoring Results

INP Period	Units	LA1	LA10	LA90	LA _{eq}
Location G					
Daytime during Operational Hours ¹	dBA	<u>Unattended noise monitoring was not conducted during January 2017</u>			
Daytime outside Operational Hours ²	dBA				
Evening ³	dBA				
Night ⁴	dBA				

- Note:**
1. Daytime - 7.00 am to 5.00 pm Monday to Friday, 8.00 am to 12.00 pm Saturday, not operational on Sunday.
 2. Daytime - 5.00 pm to 6.00 pm Monday to Friday, 12.00 pm to 6.00 pm Saturday, 8.00 am to 6.00 pm Sunday.
 3. Evening - 6.00 pm to 10.00 pm.
 4. Night - 10.00 pm to 7.00 am Monday to Saturday, 10.00 pm to 8.00 am Sunday.

5. SURFACE WATER MONITORING

Condition M2 of the EPL outlines the requirement to monitor surface water discharges from Karuah East Quarry via the three licensed discharge points (LDP001, LDP002, LDP003). The *Statement of Commitments* (Appendix 6, PA 09_0175) requires additional surface water monitoring to be undertaken for the first twelve months of operations. This additional water monitoring requires monthly sampling to be undertaken at the three licensed discharge points and at four locations on Yalimbah and Bulga Creeks when in flow.

5.1 Discharge Monitoring Results

Table 14 summarises the discharge criteria as per EPL.

Table 14 Surface Water Discharge Monitoring Criteria

Sampling Points	Pollutant	Unit	EPL Limit
LDP001 (Dam 1)	pH	pH units	6.5 – 8.5
LDP002 (Dam 2)	TSS	mg/L	40
LDP003 (Dam 3)	Oil & Grease	mg/L	5 and/or none visible
	Turbidity	NTU	-

Table 15 Surface Water Discharge Monitoring Results

Sampling Point	Date	Time	pH (pH units)	TSS (mg/L)	Oil & Grease (mg/L)	Turbidity (NTU)
LDP001 (Dam 1)	<i><u>No discharge during January 2017</u></i>					
LDP002 (Dam 2)						
LDP002 (Dam 3)						

5.2 Monthly Monitoring Results

Surface water was not sampled during January 2017. The drain lines across Karuah East site were not in flow during January 2017 and they had insufficient water for sampling. Construction work on Dam 2 was undertaken.

Summary of previous monitoring results is shown in **Table 16**.

Table 16 Surface Water Monthly Monitoring Results

Date	Dam 1				Dam 2				Dam 3				SW2 (Bulga Creek)			
	pH (Lab)	TSS	Oil & Grease	EC	pH (Lab)	TSS	Oil & Grease	EC	pH (Lab)	TSS	Oil & Grease	EC	pH (Lab)	TSS	Oil & Grease	EC
19/01/2016	-	-	-	-	-	-	-	-	-	-	-	-	4.66	<5	<5	173
25/07/2016	6.60	<5	<5	107	-	-	-	-	-	-	-	-	5.97	7	<5	158
30/08/2016	6.07	<5	<5	74	-	-	-	-	-	-	-	-	5.70	<5	<5	207
19/10/2016	5.57	96	<5	317	-	-	-	-	-	-	-	-	5.84	7	<5	172
29/11/2016	5.89	63	<5	305	5.39	72	<5	520	5.22	<5	34	260	-	-	-	-
19/12/2016	4.97	570	<5	335	4.75	119	<5	559	4.75	58	<5	284	-	-	-	-

Units: pH in pH units, Total Suspended Solids (TSS) in mg/L, Oil & Grease in mg/L, Electrical Conductivity (EC) in $\mu\text{S}/\text{cm}$

6. GROUNDWATER MONITORING

Groundwater monitoring is undertaken to meet the *EA Statement of Commitments* (Appendix 6, PA 09_0175) and Section 8.2 [Water Management Plan \(SLR, 2015\)](#). Groundwater levels are monitored quarterly and water quality biannually at four groundwater monitoring bores (piezometers). Details of this monitoring program is shown in **Table 16**. Refer to Appendix 1 for piezometer locations.

Table 17 Groundwater Monitoring Program

Piezometer	Location	Water Level monitoring frequency	Water Quality monitoring frequency
BH205	Lot 13/DP1024564	Quarterly	Biannually
¹ BH207	Lot 13/DP1024564	Quarterly	Biannually
BH208	Lot 21/DP1024341	Quarterly	Biannually
BH303	Lot 21/DP1024341	Quarterly	Biannually

Note ¹: Piezometer BH207 was relocated approximately 60m to the north on 26 September 2016.

6.1 Groundwater Levels

Table 18 Groundwater Levels

Date	Unit	BH205	² BH207	BH208	BH303
30/03/2016	¹ metres	22.83	12.38	19.54	29.93
04/10/2016	¹ metres	24.00	9.61	19.77	30.45

Note ¹: Groundwater levels are measured in metres below ground level.

Note ²: Piezometer BH207 relocated 26 September 2016.

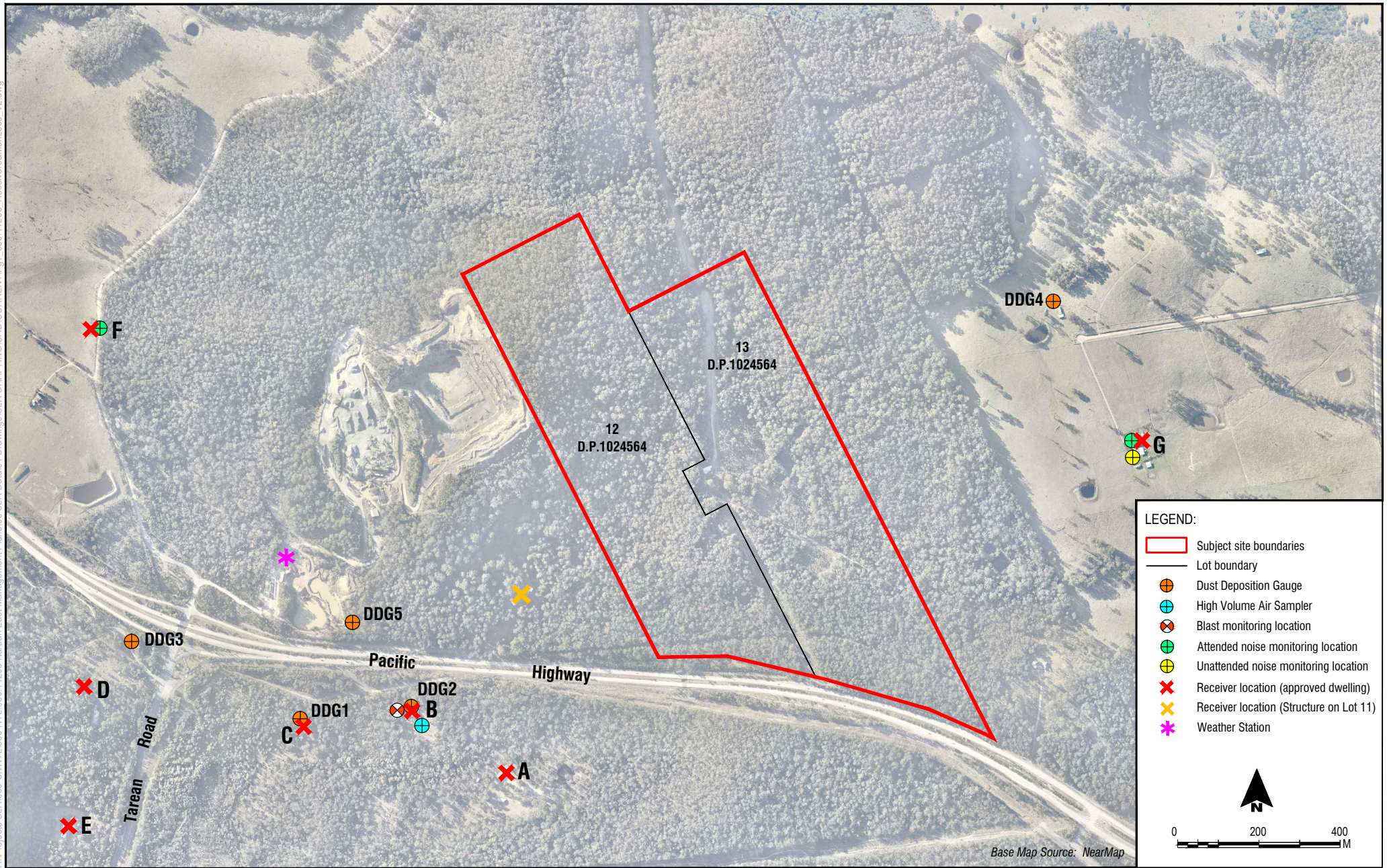
6.2 Groundwater Quality

Groundwater was not sampled during January 2017.

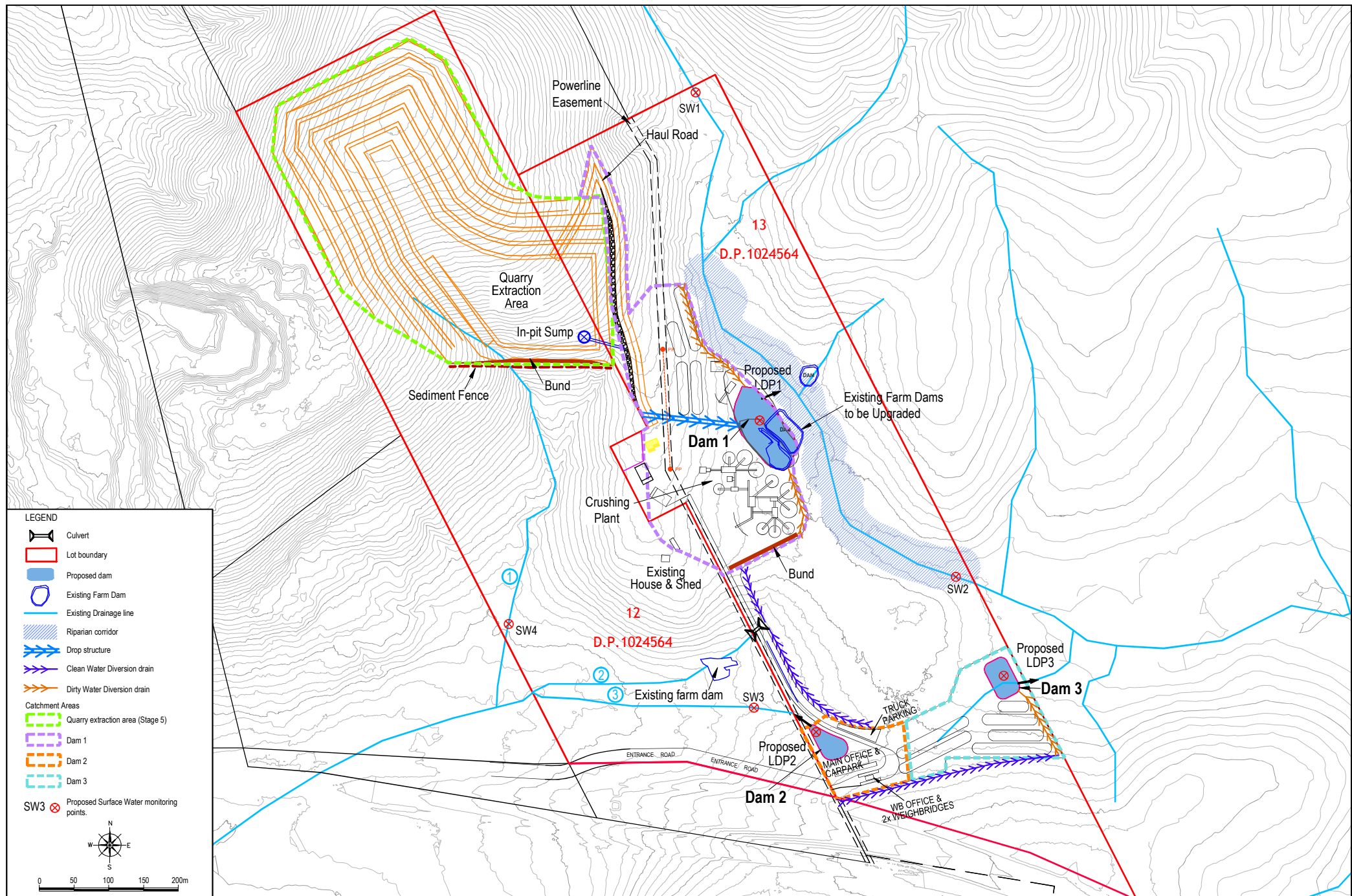
APPENDIX 1

Monitoring Locations

H:\Projects\SLR\630-SvNTL\630-NTL\630-11235 Karuah East Management Plans\06 SLR Data\01 Drawings\SLR DRAFTING\CAD\CURRENT\Fig1_630_11235 Receivers&MonLocs_V2.dwg



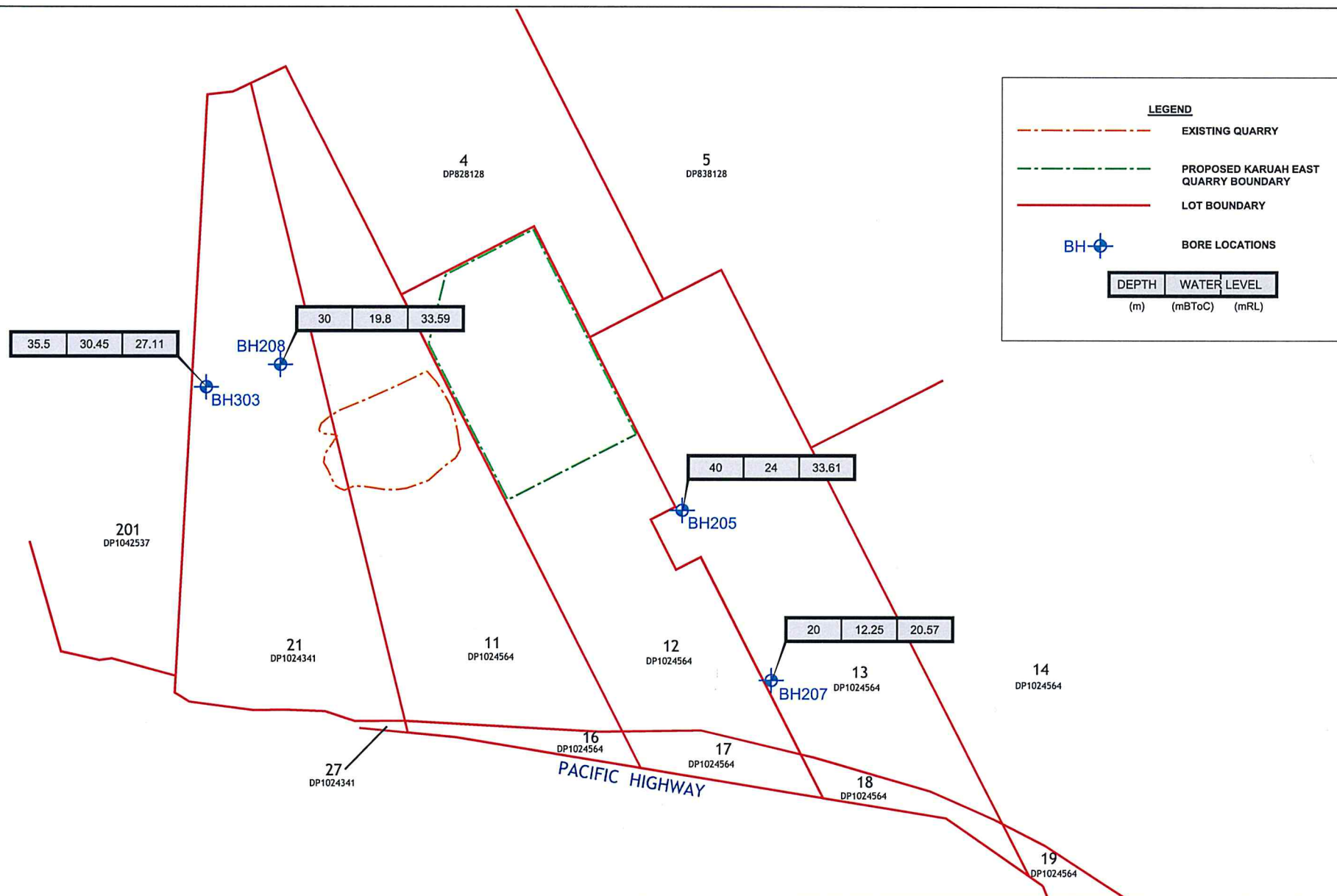
To be printed A4




V:\633.10196\Figures\CAD\Current\Fg3_HQP05-008_SWPlan_130710_MS.dwg
To be printed A3

Proposed Surface Water Management Plan

FIGURE 4



drawn	LZ	 coffey geotechnics SPECIALISTS MANAGING THE EARTH	client:	KARUAH EAST QUARRY PTY LTD	
approved	MB		project:	PROPOSED KARUAH EAST HARD ROCK QUARRY GROUNDWATER STUDY	
date	18.08.11		title:	GROUNDWATER BORE LOCATIONS AND MONITORING DATA	
scale	1:12,000		project no:	GEOTWARA21232AA-AG	figure no: FIGURE 3.1
original size	A4				