



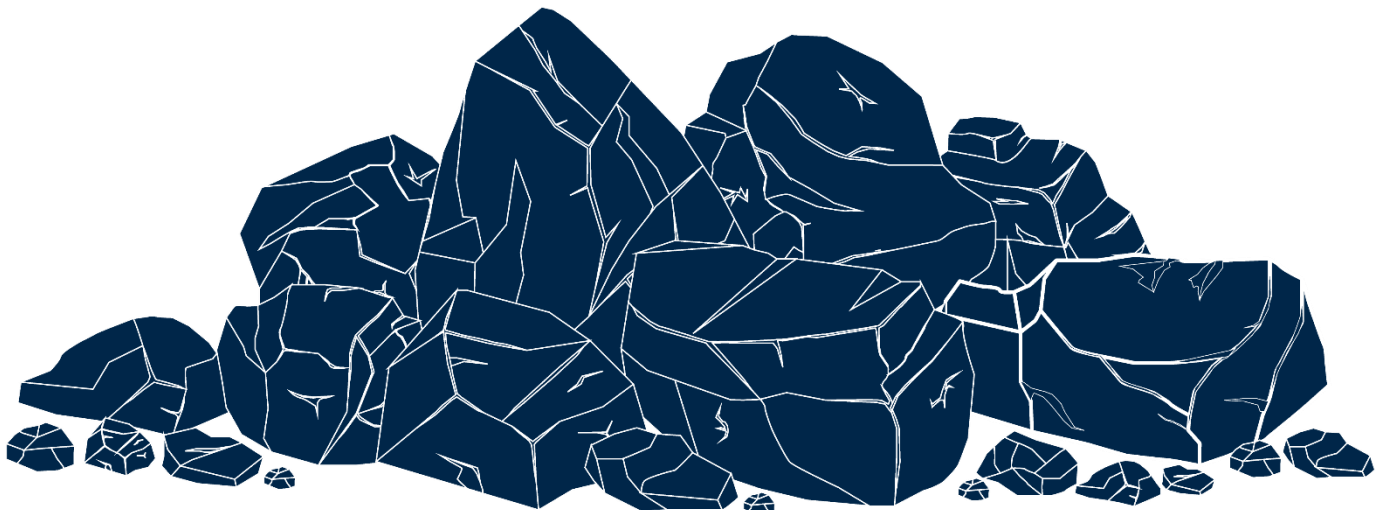
Tea Gardens Quarry
ABN: 15 093 914 937
Hunter Quarries Pty Ltd
569 Myall Way,
Tea Gardens, NSW 2324

W: www.hunterquarries.com.au
E: admin@hunterquarries.com.au
T: 02 4050 0304
P: PO Box 3284, Thornton NSW 2322

Tea Gardens Quarry

Environmental Monitoring Report

May 2026



Contents

Contents	2
1.0 Introduction.....	3
2.0 Air Quality Monitoring.....	4
2.1 Deposited Dust Monitoring.....	4
3.0 Blast Monitoring	5
4.0 Noise Monitoring	5
5.0 Surface Water Monitoring	6
6.0 Production Data	6
7.0 Reporting.....	7
7.1 Reportable Environmental Incidents	7
7.2 Reportable Non-Compliances	7
7.3 Community Complaints.....	7
Appendix 1 – EPL 12133 Monitoring Locations.....	8

1.0 Introduction

This report has been completed to meet the requirements of Section 66(6) of the *Protection of the Environment Operations Act 1997* and the NSW Environmental Protection Authority’s (EPA) Requirements for Publishing Pollution Monitoring Data (EPA, 2013). This report summarises the required monitoring data under Environmental Protection Licence 12133 (the EPL) and Development Consent, DA 2384 (the Consent) for the Tea Gardens Quarry (the Quarry) as summarised by **Table 1** and **Table 2** respectively.

Table 1 Summary of Environment Protection Licence, EPL 12133

EPL Number:	EPL 12133
Licensee’s Name:	Hunter Quarries Pty Ltd
Licensee’s Address:	Tea Gardens Quarry PO Box 3284, Thornton NSW 2322 569 Myall Way, Tea Gardens NSW 2324
Link to Full Licence on the EPA website:	EPL 12133

Table 2 Summary of Project Approval, DA 2384

Project Approval:	DA 2384
Applicant:	Hunter Quarries Pty Ltd
Consent Authority:	MidCoast Council

A summary of the environmental monitoring data for the May 2026 reporting period (the Reporting Period) is covered in this report. Tables throughout this report provide key monitoring information from the EPL and the Consent, including:

- location of monitoring;
- pollutant;
- unit of measurement; and
- monitoring frequency required.

Monitoring locations are illustrated by the site plan provided by **Appendix 1**.

The site remained on care and maintenance during the Reporting Period.

2.0 Air Quality Monitoring

Dust emissions generated by the Quarry are monitored by two on-site depositional dust gauges, which are monitored on a monthly basis, subject to the progression of approved extraction.

Deposited dust monitoring is undertaken at the locations listed in **Table 3**, in accordance with the Approved Methods of Sampling and Analysis of Air Pollutants in NSW (EPA, 2022).

However, it should be noted that no performance criteria for depositional dust (or any other air quality parameters) are provided by the Consent or EPL.

Table 3 *Air Quality Monitoring Locations.*

Site Monitoring Point ID	Site Coordinates (MGA56, GDA 2020)	Site Location
DDG 1	E 419,125; N 6,388,905	West of the operational quarry area.
DDG 2	E 419,405; N 6,388,830	South-east of the operational quarry area.

2.1 Deposited Dust Monitoring

Deposited dust results for the 12-months prior-to and including May 2026 are summarised by **Table 4**. Monitoring results for the Reporting Period at both DDG monitoring sites are generally within the industry standard long-term annual deposited dust goal of 4 g/m²/month.

Table 4 *Deposited dust monitoring results.*

Reporting Period	Start Date	End Date	Days	DDG 1	DDG 2
Jun-25	03/06/2025	01/07/2025	28	1.6	1.0
Jul-25	01/07/2025	01/08/2025	31	0.4	0.5
Aug-25	01/08/2025	01/09/2025	31	0.4	0.2
Sep-25	01/09/2025	01/10/2025	30	1.0	3.9
Oct-25	01/10/2025	31/10/2025	30	0.8	1.3
Nov-25	31/10/2025	02/12/2025	32	2.4	1.1
Dec-25	02/12/2025	02/01/2026	31	1.3	1.6
Jan-26	02/01/2026	30/01/2026	28	0.6	0.5
Feb-26	30/01/2026	27/02/2026	28	0.8	0.7
Mar-26	27/02/2026	31/03/2026	32	1.9	0.4
Apr-26	31/03/2026	01/05/2026	31	0.3	0.9
May-26	1/05/2026	1/06/2026	31	0.5	0.7
Progressive Annual Average:				1.0	1.1

3.0 Blast Monitoring

Blast monitoring is undertaken for all blasts at the Quarry at the nearest sensitive receiver to ensure that air blast overpressure and ground vibration remain within the compliance limits, as summarised by **Table 5**; with the monitoring results summarised by **Table 6**.

There were no blasts undertaken within the Reporting Period.

Table 5 Blasting Airblast Overpressure and Ground Vibration Criteria (EPL 12133).

Location	Airblast Overpressure (dB(L))	Ground Vibration (mm/s)	Allowable Exceedance
Private Residence B	120	10	0%
	115	5	5% over 12-month reporting period.

Table 6 Blasting Monitoring Results.

Date	Time	Location	Airblast Overpressure (dB(L))	Ground Vibration (mm/s)
–	–	–	–	–

*Not triggered = n/t
Ground Vibration < 0.5 mm/s
Overpressure < 108 dB(L)

4.0 Noise Monitoring

Noise monitoring is undertaken in accordance with the EPL and the site’s Noise Management Plan, which requires attended noise monitoring to be conducted on a quarterly basis if quarrying operations are undertaken during the quarterly noise Monitoring Period.

No noise monitoring was undertaken during the Reporting Period.

5.0 Surface Water Monitoring

Water monitoring is undertaken in accordance with the EPL and site’s Environmental Management Plan, with daily monitoring of surface water being discharged from the Quarry via the licenced discharge point in accordance with Condition L2 and M2 of the EPL.

There were no discharge events that occurred during the Reporting Period, as summarised by **Table 7**.

Table 7 *Discharge Water Monitoring Results.*

Date	Oil and Grease	pH	Total Suspended Solids, TSS (mg/L)	Discharge Type
LDP 1 – Main Void				
–	–	–	–	–
SW1 – Upstream Northern Drainage Line 1				
–	–	–	–	–
SW2 – Downstream Northern Drainage Line 1				
–	–	–	–	–
SW3 – Downstream Southern Drainage Line 2				
–	–	–	–	–

6.0 Production Data

Monthly monitoring of sales and truck movements are summarised by **Table 8**.

Table 8 *Quarry Production Data.*

Month	Truck Movements	Quarry Product Sales (t)
Jan-26	–	–
Feb-26	–	–
Mar-26	–	–
Apr-26	–	–
May-26	–	–
Progressive Annual Total	0	0

7.0 Reporting

7.1 Reportable Environmental Incidents

During the Reporting Period, no reportable environmental incidents occurred at the Quarry.

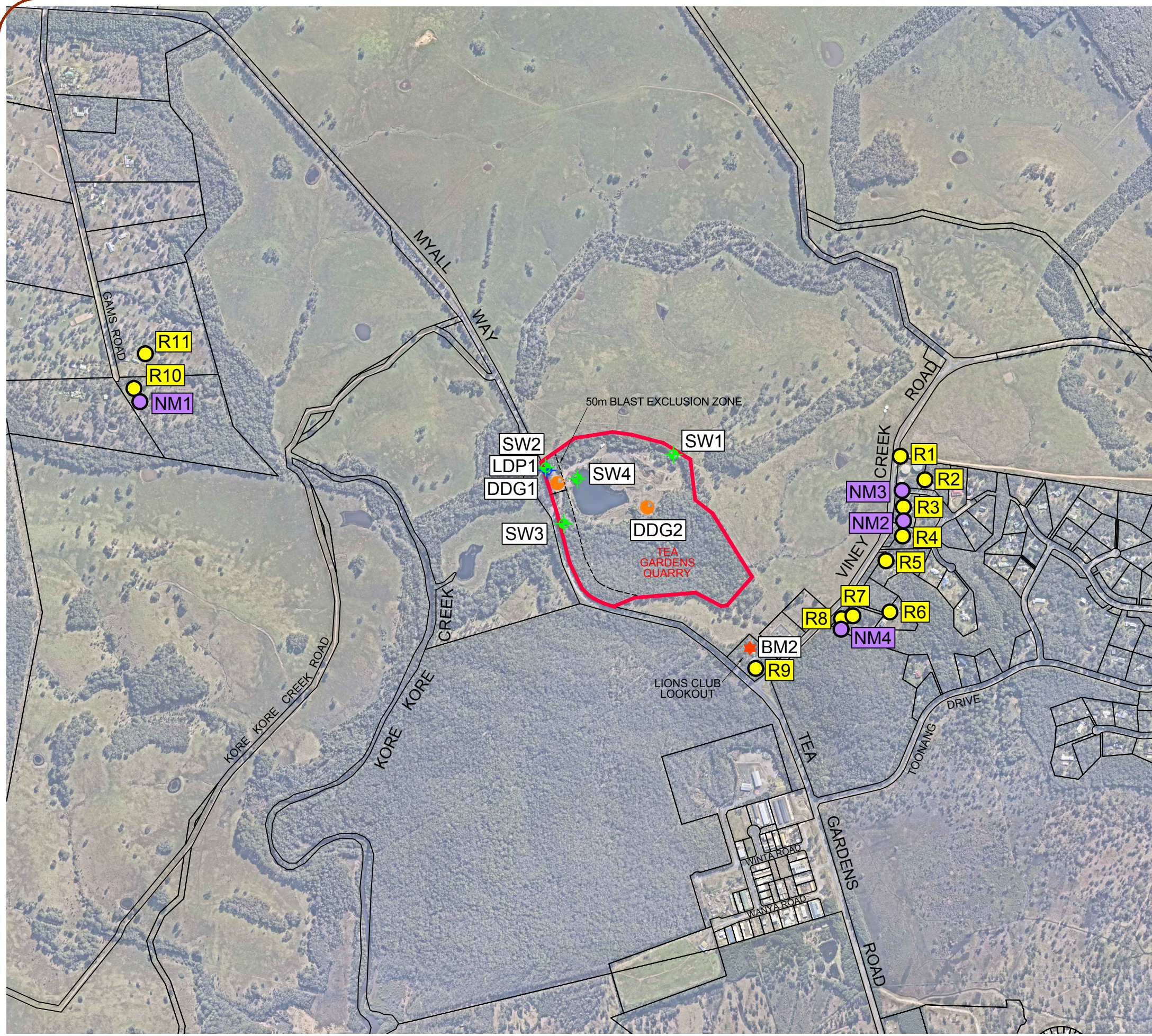
7.2 Reportable Non-Compliances

During the Reporting Period, no reportable non-compliances were identified at the Quarry.

7.3 Community Complaints

During the Reporting Period, no community complaints were received by the Quarry.

Appendix 1 – EPL 12133 Monitoring Locations



LEGEND	
	TEA GARDENS QUARRY
	SW1 SURFACE WATER MONITORING POINT
	BM1 BLAST MONITORING LOCATION
	LDP1 LICENCED DISCHARGE POINT
	NM1 NOISE MONITORING LOCATION
	R9 SENSITIVE RECEIVER LOCATIONS
	DDG1 DUST MONITORING LOCATION
	50m BLAST EXCLUSION ZONE

drawing title:
APPENDIX 1:

ENVIRONMENTAL MONITORING LOCATION PLAN

location: LOT 64 D.P.705955
 MYALL WAY,
 TEA GARDENS, NSW, 2324

council: MID COAST

dwg ref: 238539-PSK-010-B

client:



central coast office ph: (02) 4305 4300
 hunter office ph: (02) 4978 5100
 sydney office ph: (02) 8046 7411

www.adwjohnson.com.au

ver.	date	comment	drawn	pm	co-ordinate & level information	scale (A3 original size)	notes
B	12.05.25	REVISED ISSUE	LS	MR	CO-ORDINATE SYSTEM: MGA56 GDA2020 DATUM: N/A CONTOUR INTERVAL: N/A	0 250 500 625m SCALE: 1:12,500 (FULL)	