



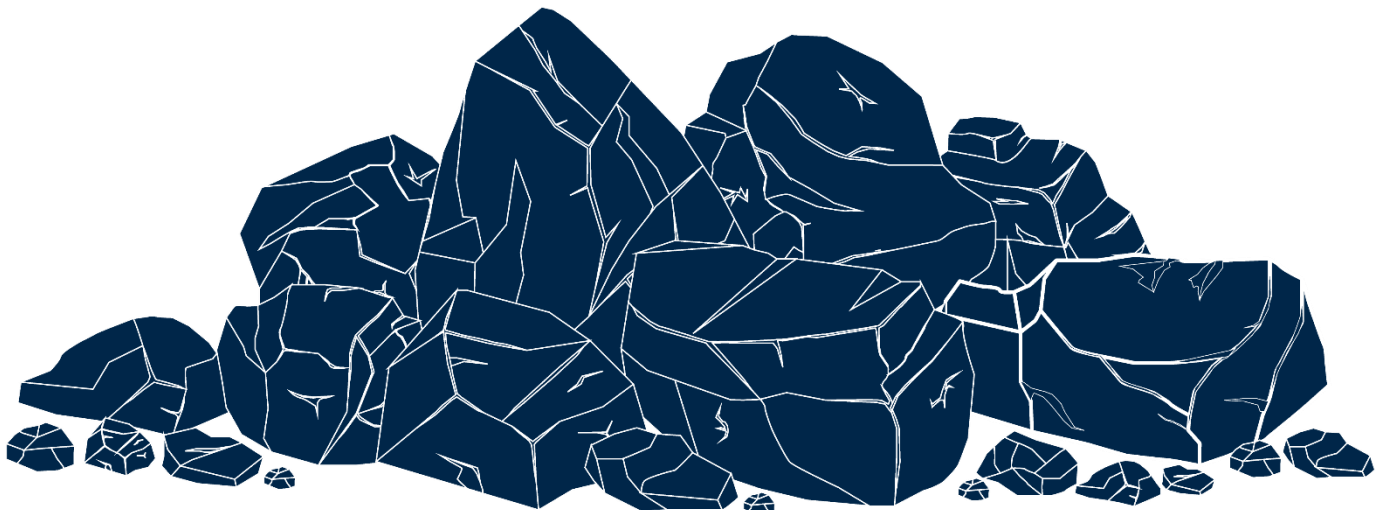
Karuah East Quarry  
ABN: 80 141 505 035  
Karuah East Quarry Pty Limited  
Blue Rock Close, Karuah NSW 2324

W: [www.hunterquarries.com.au](http://www.hunterquarries.com.au)  
E: [admin@hunterquarries.com.au](mailto:admin@hunterquarries.com.au)  
T: 02 4050 0304  
P: PO Box 23, Thornton NSW 2322

Karuah East Quarry

# Environmental Monitoring Report

May 2026



## Contents

<b>1.0</b>	<b>Introduction.....</b>	<b>3</b>
<b>2.0</b>	<b>Air Quality Monitoring.....</b>	<b>4</b>
2.1	Deposited Dust Monitoring.....	5
2.2	High Volume Air Sampling.....	6
<b>3.0</b>	<b>Blast Monitoring .....</b>	<b>8</b>
<b>4.0</b>	<b>Noise Monitoring .....</b>	<b>8</b>
<b>5.0</b>	<b>Surface Water Monitoring .....</b>	<b>9</b>
<b>6.0</b>	<b>Weather Station Monitoring .....</b>	<b>10</b>
<b>7.0</b>	<b>Production Data .....</b>	<b>11</b>
<b>8.0</b>	<b>Reporting.....</b>	<b>11</b>
8.1	Reportable Environmental Incidents .....	11
8.2	Reportable Non-Compliances .....	11
8.3	Community Complaints.....	11
<b>Appendix 1 – EPL 20611 Monitoring Locations.....</b>		<b>12</b>

## 1.0 Introduction

This report has been completed to meet the requirements of Section 66(6) of the *Protection of the Environment Operations Act 1997* and the NSW Environmental Protection Authority’s (EPA) Requirements for Publishing Pollution Monitoring Data (EPA, 2013). This report summarises the required monitoring data under Environmental Protection Licence 20611 (the EPL) and Project Approval MP09\_0175 (the Consent) for the Karuah East Quarry (the Quarry) as summarised by **Table 1** and **Table 2** respectively.

**Table 1** Summary of Environment Protection Licence, EPL 20611

<b>EPL Number:</b>	EPL 20611
<b>Licensee’s Name:</b>	Karuah East Quarry Pty Limited
<b>Licensee’s Address:</b>	Karuah East Quarry PO Box 3284, Thornton NSW 2322 Blue Rock Close, Karuah NSW 2324
<b>Link to Full Licence on the EPA website:</b>	<a href="#">EPL 20611</a>

**Table 2** Summary of Project Approval, MP09\_0175

<b>Project Approval:</b>	MP09_0175
<b>Applicant:</b>	Karuah East Quarry Pty Limited
<b>Consent Authority:</b>	NSW Planning Assessment Commission
<b>Link to Full Project Approval on the NSW Planning website:</b>	<a href="#">Project Approval MP09_0175</a>

A summary of the environmental monitoring data for the May 2026 Reporting Period (the Reporting Period) is covered in this report. Tables throughout this report provide key monitoring information from the EPL and the Consent, including:

- location of monitoring;
- pollutant;
- unit of measurement; and
- monitoring frequency required.

Monitoring locations are illustrated by the site plan provided by **Appendix 1**.

## 2.0 Air Quality Monitoring

Dust emissions generated by the Quarry operation must not cause additional exceedances of ambient air quality criterion outlined in Schedule 3, Condition 13 of the Consent and summarised by **Table 3**, **Table 4** and **Table 5**.

Deposited dust and TSP/PM10 monitoring is undertaken at the locations listed in **Table 6**, in accordance with the Approved Methods of Sampling and Analysis of Air Pollutants in NSW (EPA, 2022).

**Table 3 Long-term Assessment Criteria for Deposited Dust (MP09-0175).**

Pollutant	Averaging Period	Maximum Increase in Deposited Dust Level <sup>1</sup>	Maximum Total Deposited Dust Level <sup>1</sup>
Deposited Dust	Annual	2 g/m <sup>2</sup> /month	4 g/m <sup>2</sup> /month

<sup>1</sup> Deposited dust is assessed as insoluble solids as defined by AS 3580.10.1-2003.

**Table 4 Long-term Assessment Criteria for Particulate Matter (MP09-0175).**

Pollutant	Averaging Period	Criterion
Total Suspended Particulates	Annual	90 µg/m <sup>3</sup>
Particulate Matter < 10 µm (PM10)	Annual	30 µg/m <sup>3</sup>

**Table 5 Short-term Assessment Criteria for Particulate Matter (MP09-0175).**

Pollutant	Averaging Period	Criterion
Particulate Matter < 10 µm (PM10)	24-hour	50 µg/m <sup>3</sup>

**Table 6 Air Quality Monitoring Locations (EPL 20611).**

Site Monitoring Point ID	EPL Monitoring Point ID	Location	Address
DDG 1	12	South-West of Karuah East Quarry	54 Mill Hill Close, Karuah NSW 2324
DDG 2	13	South-West of Karuah East Quarry	64 Mill Hill Close, Karuah NSW 2324
DDG 3	14	South-West of Karuah East Quarry	Lot 251 DP1092111, Karuah NSW 2324
DDG 4	15	East of Karuah East Quarry	21 Halloran Road, North Arm Cove NSW 2324
DDG 5*	16	South-West of Karuah East Quarry	Lot 21 DP1024341, Karuah NSW 2324
HVAS	9	South-West of Karuah East Quarry	64 Mill Hill Close, Karuah NSW 2324

**NOTE:** \* DDG 5 discontinued monitoring from August 2025 due to deletion from the EPL following acquisition of Lot 11 DP1024564 from Wedgerock Pty Ltd.

## 2.1 Deposited Dust Monitoring

Deposited dust results for the 12-months prior-to and including May 2026 are summarised by **Table 7**. Monitoring results for the Reporting Period at all five DDG monitoring sites are within the long-term annual deposited dust limit of 4 g/m<sup>2</sup>/month.

**Table 7** Deposited dust monitoring results.

Reporting Period	Start Date	End Date	Days	DDG 1 EPL ID 12	DDG 2 EPL ID 13	DDG 3 EPL ID 14	DDG 4 EPL ID 15	DDG 5 <sup>1</sup> EPL ID 16
Jun-25	03/06/2025	01/07/2025	28	2.9	1.0	0.6	0.4	2.1
Jul-25	01/07/2025	01/08/2025	31	10.1 <sup>2</sup>	0.5	0.4	0.2	0.9
Aug-25	01/08/2025	01/09/2025	31	0.9	2.3	0.5	0.8	–
Sep-25	01/09/2025	01/10/2025	30	1.7	1.3	1.0	0.7	–
Oct-25	01/10/2025	31/10/2025	30	1.1	1.7	1.7	1.2	–
Nov-25	31/10/2025	02/12/2025	32	1.0	2.5	2.1	1.1	–
Dec-25	02/12/2025	02/01/2026	31	1.8	1.6	1.3	1.5	–
Jan-26	02/01/2026	30/01/2026	28	1.1	1.2	0.9	0.5	–
Feb-26	30/01/2026	27/02/2026	28	0.8	1.2	1.1	1.4	–
Mar-26	27/02/2026	31/03/2026	32	1.2	7.7 <sup>3</sup>	0.8	4.6 <sup>3</sup>	–
Apr-26	31/03/2026	01/05/2026	31	1.9	9.2 <sup>4</sup>	0.8	3.7	–
May-26	01/05/2026	01/06/2026	32	0.6	0.4	0.3	0.2	–
<b>Progressive Annual Average</b>				<b>2.1</b>	<b>2.6</b>	<b>1.0</b>	<b>1.4</b>	<b>–</b>

**Notes:**

1. DDG 5 discontinued monitoring from August 2025 due to deletion from the EPL following acquisition of Lot 11 DP1024564 from Wedgerock Pty Ltd.
2. Recorded anomalous exceedance at DDG 1 in July 2025 which was reported to the NSW Department of Planning, Housing & Infrastructure (NSW Planning), the NSW EPA and surrounding landholders in accordance with the relevant conditions of the Consent and EPL.
3. Recorded exceedances at DDG 2 and DDG 4 in March 2026 which was reported to NSW Planning, the NSW EPA and surrounding landholders in accordance with relevant conditions of the Consent and EPL. The exceedances are considered unlikely to be directly attributable to quarry operations given strong easterly winds during the monitoring period placed DDG 4 upwind of the site, whilst the result at DDG 1 was not repeated at the two neighbouring monitoring locations indicating a localised dust source.
4. Recorded exceedance at DDG 2 in April 2026 which was reported to NSW Planning, the NSW EPA and surrounding landholders in accordance with relevant conditions of the Consent and EPL. The result at DDG 2 was not repeated at the two neighbouring monitoring locations indicating a localised dust source.

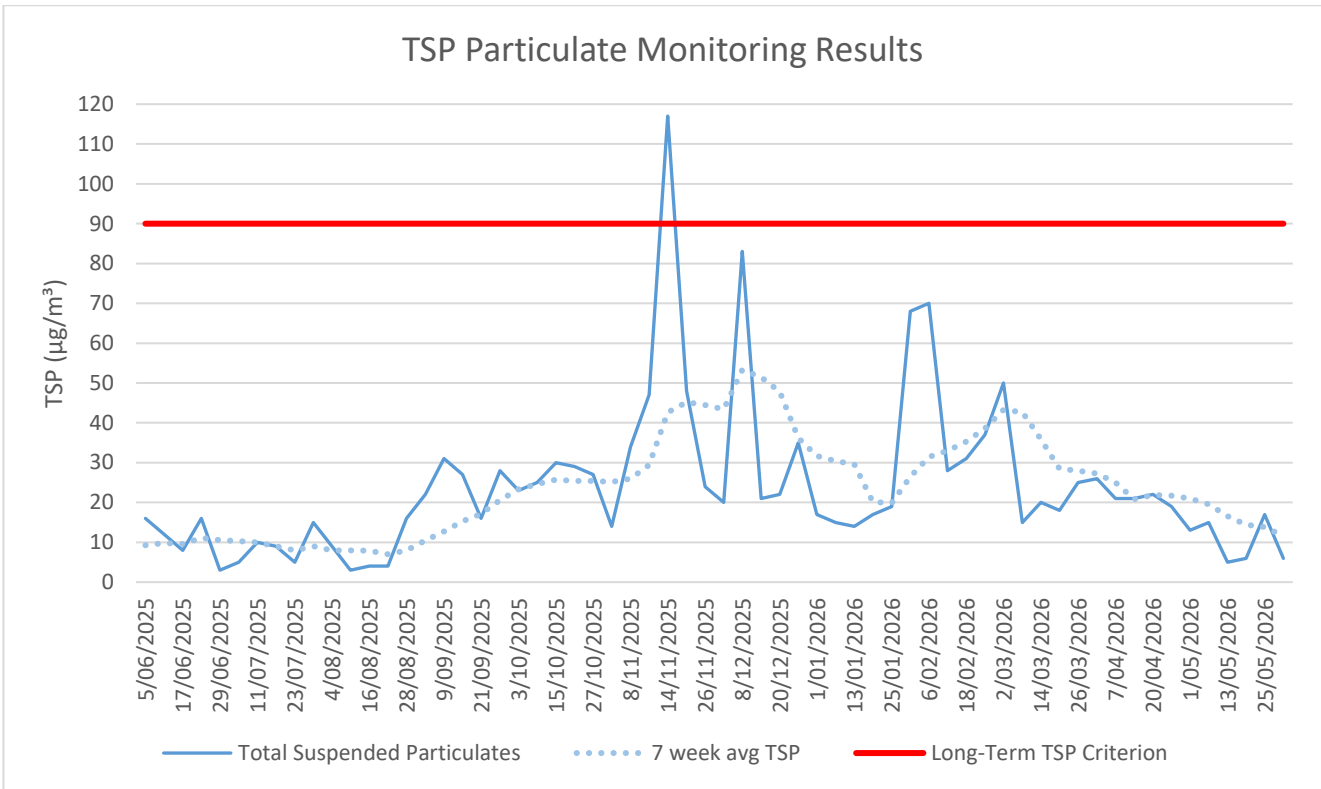
## 2.2 High Volume Air Sampling

TSP and PM10 results for the Reporting Period are summarised by **Table 8** and illustrated respectively by **Figure 1** and **Figure 2**.

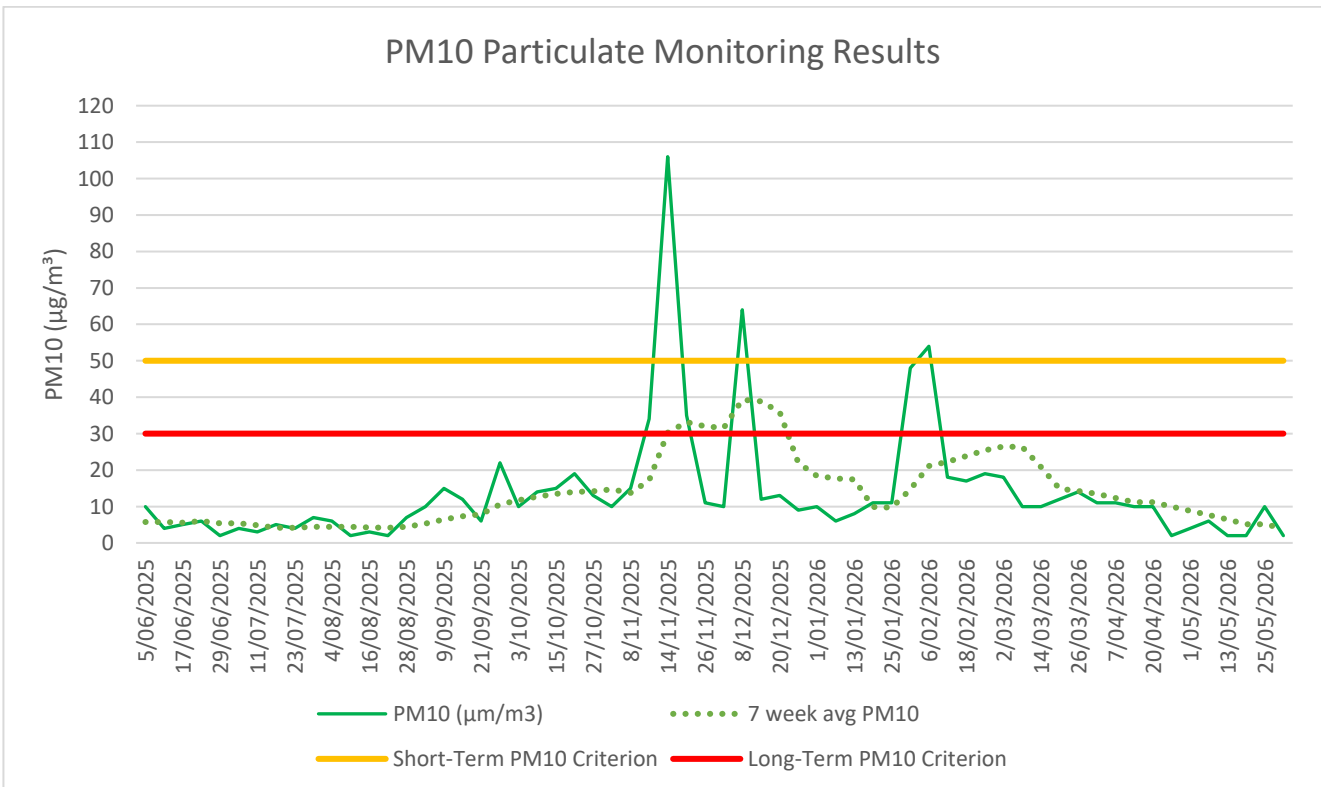
Monitoring results for the six HVAS run days within the Reporting Period were compliant with the long-term criteria for TSP and PM10, and short-term criteria for PM10.

**Table 8** *HVAS TSP and PM10 monitoring results for the Reporting Period.*

Run Date	Total Suspended Particulates, TSP ( $\mu\text{g}/\text{m}^3$ )	Particulate Matter < 10 $\mu\text{m}$ , PM10 ( $\mu\text{g}/\text{m}^3$ )
01/05/2026	13	4
07/05/2026	15	6
13/05/2026	5	2
19/05/2026	6	2
25/05/2026	17	10
31/05/2026	6	2



**Figure 1** Long-term TSP monitoring trends.



**Figure 2** Long-term PM10 monitoring trends.

### 3.0 Blast Monitoring

Blast monitoring is undertaken for all blasts at the Quarry at the nearest residential location (EPL Monitoring Point 11) to ensure that air blast overpressure and ground vibration remain within the compliance limits, as summarised by **Table 9**; with the monitoring results summarised by **Table 10**.

There were two blasts undertaken during the Reporting Period, which were observed to be within compliance limits.

**Table 9 Blasting Airblast Overpressure and Ground Vibration Criteria (MP09-0175 & EPL 20611).**

Location	Airblast Overpressure (dB(L))	Ground Vibration (mm/s)	Allowable Exceedance
Private Residence B	120	10	0%
EPL Monitoring Point ID 11	115	5	5% over 12-month reporting period.

**Table 10 Blasting Monitoring Results.**

Date	Time	Location	Airblast Overpressure (dB(L))	Ground Vibration (mm/s)
01/05/2026	12:30 pm	RL128 + RL135	n/t	n/t
15/05/2026	11:06 am	RL90	110.6	0.72

\*Not triggered = n/t  
 Ground Vibration < 0.5 mm/s  
 Overpressure < 108 dB(L)

### 4.0 Noise Monitoring

Noise monitoring is undertaken in accordance with the EPL and NSW Planning approved Noise Management Plan, which requires attended noise monitoring to be conducted on a quarterly basis.

There was no noise monitoring undertaken during the Reporting Period.

## 5.0 Surface Water Monitoring

Water monitoring is undertaken in accordance with the EPL and NSW Planning approved Site Water Management Plan, with daily monitoring of surface water being discharged from the Quarry via the licenced discharge point in accordance with Condition L2 and M2 of the EPL.

Discharge events that occurred during the Reporting Period, as summarised by **Table 11**.

Controlled discharge events were compliant with the limits provided by the Consent and EPL, including Total Suspended Solids (TSS) below 40 mg/L and pH within the range of 6.5 to 8.5

However, a major rainfall event greater than the design storm event was experienced at the site over four days from 27 to 30 May 2026. The quarry received 121.8 mm of rainfall during this event resulting in non-compliant discharges relating to exceedances of the site's TSS limits. During the event the site's Pollution Incident Response Management Plan (PIRMP) was enacted.

**Table 11 Discharge Water Monitoring Results.**

Date	pH	Turbidity (NTU)	Total Suspended Solids, TSS (mg/L)	Oil and Grease	Discharge Type
<b>LDP 1 – Dam 1</b>					
22/05/2026	7.0	50	20	Not Visible	Controlled
29/05/2026	7.6	>1,000	1,700	Not Visible	Uncontrolled
30/05/2026	7.4	>1,000	1,300	Not Visible	Uncontrolled
31/05/2026	7.4	>1,000	400	Not Visible	Uncontrolled
<b>LDP 2 – Dam 2</b>					
11/05/2026	7.7	3.2	8	Not Visible	Controlled
14/05/2026	7.4	29	30	Not Visible	Controlled
20/05/2026	7.4	40	16	Not Visible	Controlled
22/05/2026	7.1	5.3	<5	Not Visible	Controlled
23/05/2026	7.5	4.6	<5	Not Visible	Controlled
26/05/2026	7.5	40	27	Not Visible	Controlled
27/05/2026	6.5	55	31	Not Visible	Controlled
29/05/2026	7.1	850	440	Not Visible	Uncontrolled
30/05/2026	6.9	590	300	Not Visible	Controlled
31/05/2026	6.8	60	29	Not Visible	Controlled
<b>LDP 3 – Dam 3</b>					
15/05/2026	7.2	11	10	Not Visible	Controlled
18/05/2026	7.4	1.8	<5	Not Visible	Controlled
20/05/2026	7.2	9.8	<5	Not Visible	Controlled
21/05/2026	7.2	5.1	6	Not Visible	Controlled
22/05/2026	6.8	40	25	Not Visible	Controlled
23/05/2026	7.1	11	9	Not Visible	Controlled
25/05/2026	7.2	24	19	Not Visible	Controlled
26/05/2026	7.3	9.1	<5	Not Visible	Controlled
27/05/2026	7.3	26	15	Not Visible	Controlled
28/05/2026	6.9	50	44	Not Visible	Controlled
29/05/2026	7.3	100	73	Not Visible	Controlled
30/05/2026	7.1	220	140	Not Visible	Controlled
31/05/2026	7.0	55	31	Not Visible	Controlled

## 6.0 Weather Station Monitoring

The Quarry operates and maintains a permanent meteorological monitoring station to record weather parameters including temperature, wind speed and direction, solar radiation, and rainfall. **Figure 3** below outlines the weather records for the Reporting Period.



### Monthly Weather Summary

Site: **Karuah Quarry Complex**  
 Month: **May 2026**

Date	Day	Temperature @ 2m			Temperature @ 10m			Wind Speed			Solar Radiation		Rain <sup>2</sup>
		Max <sup>1</sup>	Min <sup>2</sup>	Ave <sup>1</sup>	Max <sup>1</sup>	Min <sup>2</sup>	Ave <sup>1</sup>	Max Gust <sup>1</sup>	Ave Speed <sup>1</sup>	Dir Ave <sup>1</sup>	Max <sup>1</sup>	Ave <sup>1</sup>	
		°C	°C	°C	°C	°C	°C	km/h	km/h	deg	W/m <sup>2</sup>	W/m <sup>2</sup>	mm
1	Fri	23.4	12.6	16.2	22.5	13.3	16.5	24.9	2	196.4	686.7	89.3	1.2
2	Sat	25	14.8	19.2	23.4	15.6	19.1	21.3	3.2	165.7	620.8	100.3	0.2
3	Sun	25.3	14.3	19.4	24.6	15.9	19.9	28.4	3.9	211.1	618.3	113	0.2
4	Mon	26	13.1	19.9	25	14.3	20.2	28.4	4.6	235.2	557.5	113.5	0
5	Tue	27.8	16.3	20	26.6	16.5	19.9	16.6	2.7	203.8	609.2	91.1	5.8
6	Wed	21.3	8.6	13.8	20.6	9.2	14.2	13	2	224.4	545.8	81.6	0.2
7	Thu	23.7	9	15.6	22.4	10.1	16.1	23.7	2.5	181.6	595	117	0.2
8	Fri	19.7	7.6	13.2	18.7	8.7	13.3	41.4	9	242.8	557.4	100.4	0
9	Sat	21.3	5.5	13.4	20.4	6.5	14.5	35.5	5.6	247.9	484.2	123.4	0
10	Sun	22.5	7.7	13.4	21.1	8.3	13.7	23.7	3.5	206.1	514.1	121.1	0
11	Mon	23.3	12.7	17.4	21.6	13.5	17.2	18.9	3.2	193.9	761.6	112.7	0.8
12	Tue	22.9	11.8	16.4	21.9	12.7	16.4	30.8	3.8	193.9	575.8	90	2
13	Wed	21.7	14.3	17.1	20.9	14.6	17.1	28.4	3.8	147.4	695.8	75	11.4
14	Thu	22.7	11.3	16.1	21.8	11.6	16.3	24.9	2.7	186.7	690.8	83.2	9.8
15	Fri	18.8	13.3	15.6	19	13.7	15.5	29.6	2.9	203.9	510.8	56.9	10.6
16	Sat	21.7	13.2	15.7	20.3	13.1	15.7	16.6	2.2	203.2	672.4	64.1	2.6
17	Sun	22.1	14.2	16.9	21.4	13.9	16.9	17.8	2.5	150.3	527.4	69.5	0
18	Mon	23.8	15.8	18.4	22.7	15.6	18.6	14.2	2.3	165.2	568.3	77.3	0.2
19	Tue	18.6	14.8	16.8	18.3	14.9	16.7	10.6	1.6	198.6	164.2	24.6	26.6
20	Wed	21.8	13	16	21.2	13.7	16.2	28.4	4.7	248.9	539.9	59.5	6
21	Thu	19.7	10.4	13.8	18.7	11	14.2	24.9	4.1	202.8	514.2	78.6	1.2
22	Fri	16.4	13.1	14.4	16.3	12.8	14.4	30.8	4.3	208.8	431.6	33.8	51.4
23	Sat	19.9	14.8	16.7	19.3	14.7	16.9	31.9	5.6	102.9	647.5	59.2	12.6
24	Sun	21	11	15.5	20.5	11.5	15.6	24.9	2.4	193.9	604.1	59.4	6.4
25	Mon	20.7	15	17.5	20	14.8	17.3	15.4	1.6	163.3	452.5	65.8	10.6
26	Tue	23.3	16.7	18.7	22.5	16.9	18.8	15.4	3.2	167.2	576.7	65.1	0.8
27	Wed	23.7	15.3	18.6	23.2	15.5	18.5	14.2	2.5	207.4	627.4	61.2	13.6
28	Thu	18.8	17.2	17.7	18.5	16.9	17.6	9.5	1.5	189.4	209.2	22.4	10.6
29	Fri	20.2	16.9	18.2	19.8	16.9	18.2	43.8	6.6	118.2	296.7	34.7	77.4
30	Sat	18.5	11.7	15.6	18.7	12.8	16	39	6.7	200.4	200	18.1	20.2
31	Sun	19.3	9.7	13.9	18.6	10.9	14.7	27.2	5.1	246.6	551.7	91	0
<b>Ave or Total</b>		<b>21.8</b>	<b>12.8</b>	<b>16.5</b>	<b>21.0</b>	<b>13.2</b>	<b>16.7</b>	<b>24.3</b>	<b>3.6</b>	<b>193.8</b>	<b>535.7</b>	<b>75.9</b>	<b>282.6</b>
<b>High</b>		<b>27.8</b>	<b>17.2</b>	<b>20.0</b>	<b>26.6</b>	<b>16.9</b>	<b>20.2</b>	<b>43.8</b>	<b>9.0</b>		<b>761.6</b>	<b>123.4</b>	<b>77.4</b>
<b>Low</b>		<b>16.4</b>	<b>5.5</b>	<b>13.2</b>	<b>16.3</b>	<b>6.5</b>	<b>13.3</b>	<b>9.5</b>	<b>1.5</b>		<b>164.2</b>	<b>18.1</b>	
												<b>No. rain days &gt;1mm:</b>	<b>18</b>

Notes: 1. Values are for the 24 hour period from 9am to 9am next day.

2. Values are for the 24 hours to 9am.

**Figure 3 Weather Records Summary during the Reporting Period.**

## 7.0 Production Data

Monthly monitoring of sales and truck movements are summarised by **Table 12**.

**Table 12** Quarry Production Data.

Month	Truck Movements	Quarry Product Sales (t)
Jan-26	1,669	53,474
Feb-26	2,453	76,092
Mar-26	2,684	82,141
Apr-26	2,223	70,604
May-26	2,358	73,611
<b>Progressive Annual Total</b>	<b>11,387</b>	<b>355,922</b>

## 8.0 Reporting

### 8.1 Reportable Environmental Incidents

During the Reporting Period, one reportable environmental incident occurred at the Quarry.

- Uncontrolled discharge of sediment-laden water to Yalimbah and Bulga Creeks from Wednesday, 27 May to Saturday, 30 May 2026 following the receipt of 121.8 mm of rainfall over four days. This rainfall event exceeded the 95th percentile 5-day rainfall depth of 90.6 mm, which the site's sediment dams are designed to withstand in accordance with Landcom's Blue Book (Managing Urban Stormwater: Soils and Construction – Volume 2E, Mines and quarries).

During the event the site's PIRMP was enacted through reporting to relevant authorities, the KEQPL executive and the local community. Formal incident reports were subsequently submitted to NSW Planning and the NSW EPA.

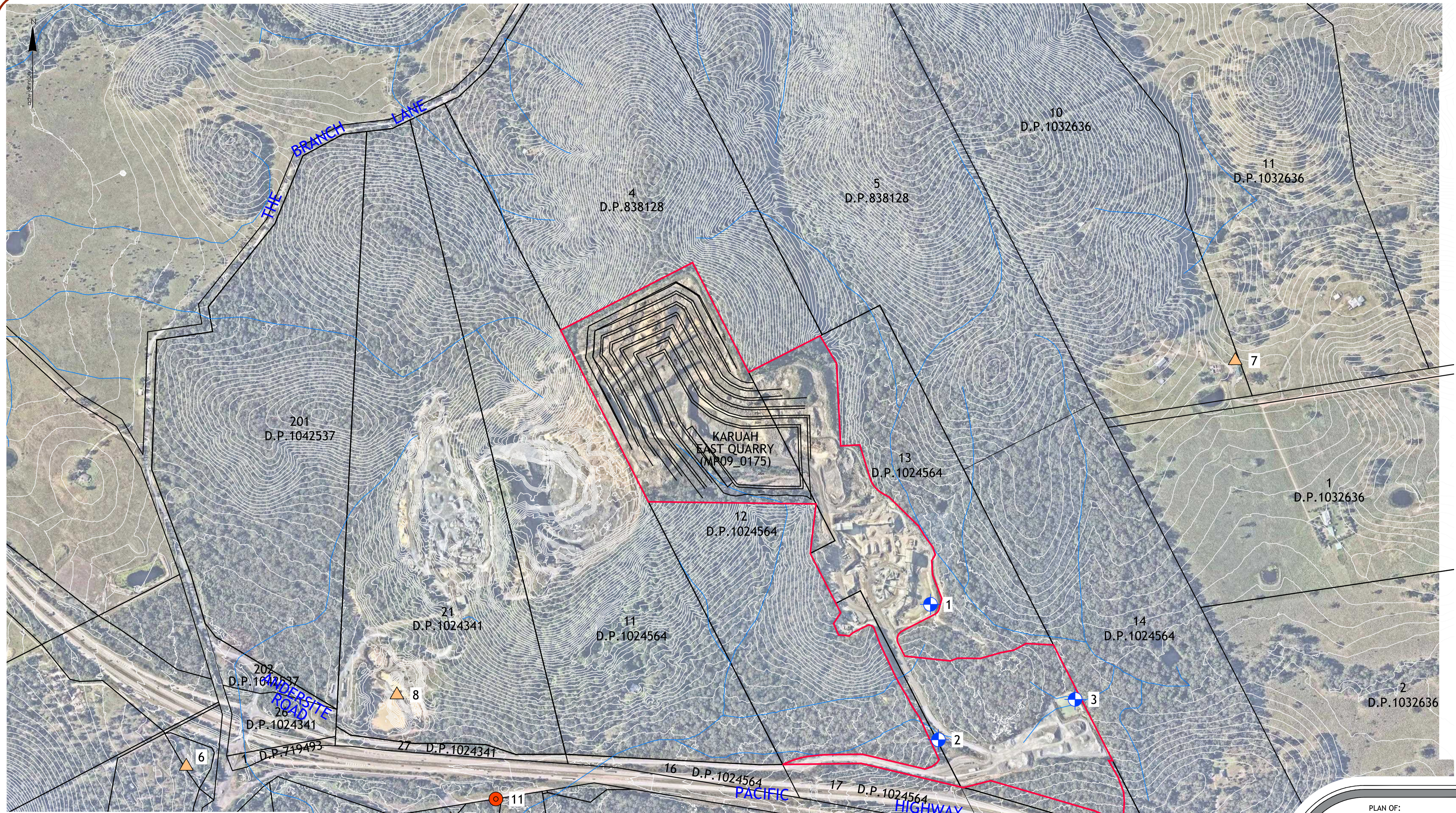
### 8.2 Reportable Non-Compliances

During the Reporting Period, no reportable non-compliances were identified at the Quarry.

### 8.3 Community Complaints

During the Reporting Period, no community complaints were reported to the Quarry.

## Appendix 1 – EPL 20611 Monitoring Locations



EPA IDENTIFICATION POINTS ^				
No.	TYPE	EASTING*	NORTHING*	DESCRIPTION
1	DISCHARGE	407 341 m	6 389 325 m	LDP1 (Discharge to Waters from Dam 1)
2	DISCHARGE	407 358 m	6 389 032 m	LDP2 (Discharge to Waters from Dam 2)
3	DISCHARGE	407 654 m	6 389 119 m	LDP3 (Discharge to Waters from Dam 3)
12	MONITORING	406 300 m	6 388 858 m	DDG1 Air Quality Sensitive Receiver
13	MONITORING	406 430 m	6 388 808 m	DDG2 Air Quality Sensitive Receiver
14	MONITORING	405 726 m	6 388 974 m	DDG3 Air Quality Sensitive Receiver
15	MONITORING	408 002 m	6 389 854 m	DDG4 Air Quality Sensitive Receiver
16	MONITORING	406 183 m	6 389 129 m	DDG5 Air Quality Sensitive Receiver
9	MONITORING	406 434 m	6 388 809 m	B HVAS Air Quality Sensitive Receiver
11	MONITORING	406 398 m	6 388 903 m	Air Blast Monitor

\*COORDINATES SHOWN ARE PROVIDED BY HQPL & ARE ON GDA2020 DATUM

ver.	date	comment	surveyed	drawn	checked	pm	co-ordinate information	level information	scale (A1 original size)	page
A	11.06.2020	INITIAL EPL PLAN	--	Z.J.	M.R.	M.R.	CO-ORDINATE SYSTEM: M.G.A. ZONE 56	DATUM: A.H.D.	0 100 200m	1 OF 1
B	24.07.2023	UPDATED EPL BOUNDARY	--	Z.J.	M.R.	M.R.	FOR PLAN CONTENT GDA94	ORIGIN OF LEVELS: LIDAR DATA	SCALE: 1:4000 (FULL)	
C	17.05.2024	UPDATED MONITORING LOCATIONS	HQPL	Z.J.	M.R.	M.R.	ORIGIN OF CO-ORDINATES: P.M.			
D	20.05.2024	UPDATED LDP NAMING & POINTS	HQPL	Z.J.	M.R.	M.R.				

^ MONITORING POINTS HAVE BEEN PROVIDED BY HUNTER QUARRIES PTY LTD. REFER TO PLAN 'KARUAH HARD ROCK QUARRY ENVIRONMENTAL MONITORING LOCATIONS - FIGURE 1' BY SLR CONSULTING AUSTRALIA - REFERENCE: 633.HQP00.0030 DATED 23/06/2014.

PLAN OF:  
**ENVIRONMENTAL PROTECTION LICENCE (EPL 20611)**  
**KARUAH EAST QUARRY**

location: LOT 12 D.P.1024564, LOT 13 D.P.1024564, BLUE ROCK CLOSE, KARUAH, NSW, 2324

council: MID COAST

dwg ref: 11819-EPL-002-D

client:



central coast office ph: (02) 4305 4300  
 hunter office ph: (02) 4978 5100  
 sydney office ph: (02) 8046 7411

www.adwjohanson.com.au