



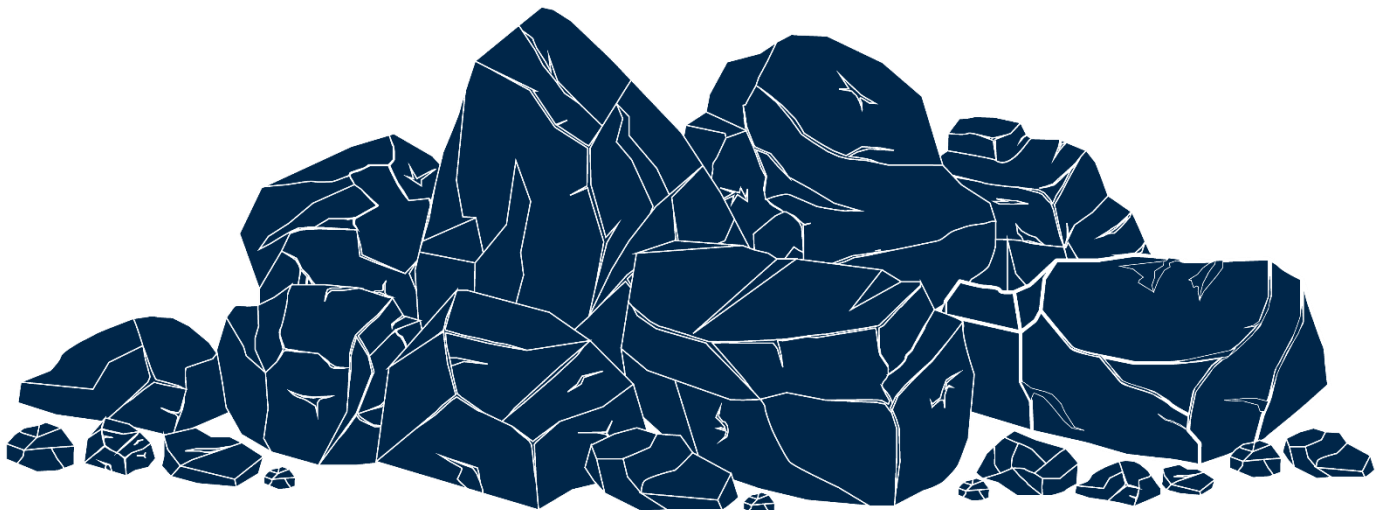
Karuah East Quarry
ABN: 80 141 505 035
Karuah East Quarry Pty Limited
Blue Rock Close, Karuah NSW 2324

W: www.hunterquarries.com.au
E: admin@hunterquarries.com.au
T: 02 4050 0304
P: PO Box 23, Thornton NSW 2322

Karuah East Quarry

Environmental Monitoring Report

October 2025



Contents

Contents	2
1.0 Introduction.....	3
2.0 Air Quality Monitoring.....	4
2.1 Deposited Dust Monitoring.....	5
2.2 High Volume Air Sampling.....	6
3.0 Blast Monitoring	8
4.0 Noise Monitoring	8
5.0 Surface Water Monitoring	9
6.0 Weather Station Monitoring	10
7.0 Production Data	11
8.0 Reporting.....	11
8.1 Reportable Environmental Incidents	11
8.2 Reportable Non-Compliances	11
8.3 Community Complaints.....	11
Appendix 1 – EPL 20611 Monitoring Locations.....	12

1.0 Introduction

This report has been completed to meet the requirements of Section 66(6) of the *Protection of the Environment Operations Act 1997* and the NSW Environmental Protection Authority’s (EPA) Requirements for Publishing Pollution Monitoring Data (EPA, 2013). This report summarises the required monitoring data under Environmental Protection Licence 20611 (the EPL) and Project Approval MP09_0175 (the Consent) for the Karuah East Quarry (the Quarry) as summarised by **Table 1** and **Table 2** respectively.

Table 1 Summary of Environment Protection Licence, EPL 20611

EPL Number:	EPL 20611
Licensee’s Name:	Karuah East Quarry Pty Limited
Licensee’s Address:	Karuah East Quarry PO Box 3284, Thornton NSW 2322 Blue Rock Close, Karuah NSW 2324
Link to Full Licence on the EPA website:	EPL 20611

Table 2 Summary of Project Approval, MP09_0175

Project Approval:	MP09_0175
Applicant:	Karuah East Quarry Pty Limited
Consent Authority:	NSW Planning Assessment Commission
Link to Full Project Approval on the NSW Planning website:	Project Approval MP09_0175

A summary of the environmental monitoring data for the October 2025 Reporting Period (the Reporting Period) is covered in this report. Tables throughout this report provide key monitoring information from the EPL and the Consent, including:

- location of monitoring;
- pollutant;
- unit of measurement; and
- monitoring frequency required.

Monitoring locations are illustrated by the site plan provided by **Appendix 1**.

2.0 Air Quality Monitoring

Dust emissions generated by the Quarry operation must not cause additional exceedances of ambient air quality criterion outlined in Schedule 3, Condition 13 of the Consent and summarised by **Table 3**, **Table 4** and **Table 5**.

Deposited dust and TSP/PM10 monitoring is undertaken at the locations listed in **Table 6**, in accordance with the Approved Methods of Sampling and Analysis of Air Pollutants in NSW (EPA, 2022).

Table 3 Long-term Assessment Criteria for Deposited Dust (MP09-0175).

Pollutant	Averaging Period	Maximum Increase in Deposited Dust Level ¹	Maximum Total Deposited Dust Level ¹
Deposited Dust	Annual	2 g/m ² /month	4 g/m ² /month

¹ Deposited dust is assessed as insoluble solids as defined by AS 3580.10.1-2003.

Table 4 Long-term Assessment Criteria for Particulate Matter (MP09-0175).

Pollutant	Averaging Period	Criterion
Total Suspended Particulates	Annual	90 µg/m ³
Particulate Matter < 10 µm (PM10)	Annual	30 µg/m ³

Table 5 Short-term Assessment Criteria for Particulate Matter (MP09-0175).

Pollutant	Averaging Period	Criterion
Particulate Matter < 10 µm (PM10)	24-hour	50 µg/m ³

Table 6 Air Quality Monitoring Locations (EPL 20611).

Site Monitoring Point ID	EPL Monitoring Point ID	Location	Address
DDG 1	12	South-West of Karuah East Quarry	54 Mill Hill Close, Karuah NSW 2324
DDG 2	13	South-West of Karuah East Quarry	64 Mill Hill Close, Karuah NSW 2324
DDG 3	14	South-West of Karuah East Quarry	Lot 251 DP1092111, Karuah NSW 2324
DDG 4	15	East of Karuah East Quarry	21 Halloran Road, North Arm Cove NSW 2324
DDG 5*	16	South-West of Karuah East Quarry	Lot 21 DP1024341, Karuah NSW 2324
HVAS	9	South-West of Karuah East Quarry	64 Mill Hill Close, Karuah NSW 2324

NOTE: * DDG 5 discontinued monitoring from August 2025 due to deletion from the EPL following acquisition of Lot 11 DP1024564 from Wedgerock Pty Ltd.

2.1 Deposited Dust Monitoring

Deposited dust results for the 12-months prior-to and including October 2025 are summarised by **Table 7**. Monitoring results for the Reporting Period at all five DDG monitoring sites are within the long-term annual deposited dust limit of 4 g/m²/month.

Table 7 Deposited dust monitoring results.

Reporting Period	Start Date	End Date	Days	DDG 1 (EPL ID 4) EPL ID 12	DDG 2 (EPL ID 5) EPL ID 13	DDG 3 (EPL ID 6) EPL ID 14	DDG 4 (EPL ID 7) EPL ID 15	DDG 5** (EPL ID 8) EPL ID 16
Nov-24	31/10/2024	29/11/2024	29	(1.4)	(1.1)	(1.1)	(1.7)	(0.9)
Dec-24	29/11/2024	30/12/2024	29	(0.6)	(1.4)	(1.3)	(3.1)	(1.1)
Jan-25	30/12/2024	31/01/2025	32	(3.8)	(1.7)	(1.9)	(1.3)	(1.3)
Feb-25	31/01/2025	03/03/2025	31	(1.2)	(0.9)	(1.1)	(1.2)	(2.1)
Mar-25	03/03/2025	03/04/2025	31	(0.7)	(1.0)	(1.4)		(28.2) [^]
	04/03/2025	03/04/2025	30				(1.1)	
Apr-25	03/04/2025	05/05/2025	32	1.2	3.2	0.4	(1.0)	1.1
May-25	05/05/2025	03/06/2025	29	2.0	3.9	0.2	(0.3)	0.6
Jun-25	03/06/2025	01/07/2025	28	2.9	1.0	0.6	0.4	2.1
Jul-25	01/07/2025	01/08/2025	31	10.1*	0.5	0.4	0.2	0.9
Aug-25	01/08/2025	01/09/2025	31	0.9	2.3	0.5	0.8	–
Sep-25	01/09/2025	01/10/2025	30	1.7	1.3	1.0	0.7	–
Oct-25	01/10/2025	31/10/2025	30	1.1	1.7	1.7	1.2	–
Progressive Annual Average				2.3	1.7	1.0	1.1	–

Notes: * Recorded anomalous exceedance which was reported to the NSW Department of Planning, Housing & Infrastructure (NSW Planning), the NSW EPA and surrounding landholders in accordance with the relevant conditions of the Consent and EPL.

[^] An exceedance was recorded at DDG5 during the March 2025 Monitoring Period, due to an elevated quantity of combustible matter being recorded (27.5 g). This is attributed to the development of a significant algal bloom on the collected rainwater surface within the dust gauge glassware. This event was reported to NSW Planning, the NSW EPA and surrounding landholders in accordance with the relevant conditions of the Consent and EPL.

** DDG 5 discontinued monitoring from August 2025 due to deletion from the EPL following acquisition of Lot 11 DP1024564 from Wedgerock Pty Ltd.

2.2 High Volume Air Sampling

TSP and PM10 results for the Reporting Period are summarised by **Table 8** and illustrated respectively by **Figure 1** and **Figure 2**.

Monitoring results for the five HVAS run days within the Reporting Period were compliant with the long-term limits for TSP and PM10 and short-term limits for PM10.

Table 8 *HVAS TSP and PM10 monitoring results for the Reporting Period.*

Run Date	Total Suspended Particulates, TSP ($\mu\text{g}/\text{m}^3$)	Particulate Matter < 10 μm , PM10 ($\mu\text{g}/\text{m}^3$)
03/10/2025	23	10
09/10/2025	25	14
15/10/2025	30	15
21/10/2025	29	19
27/10/2025	27	13

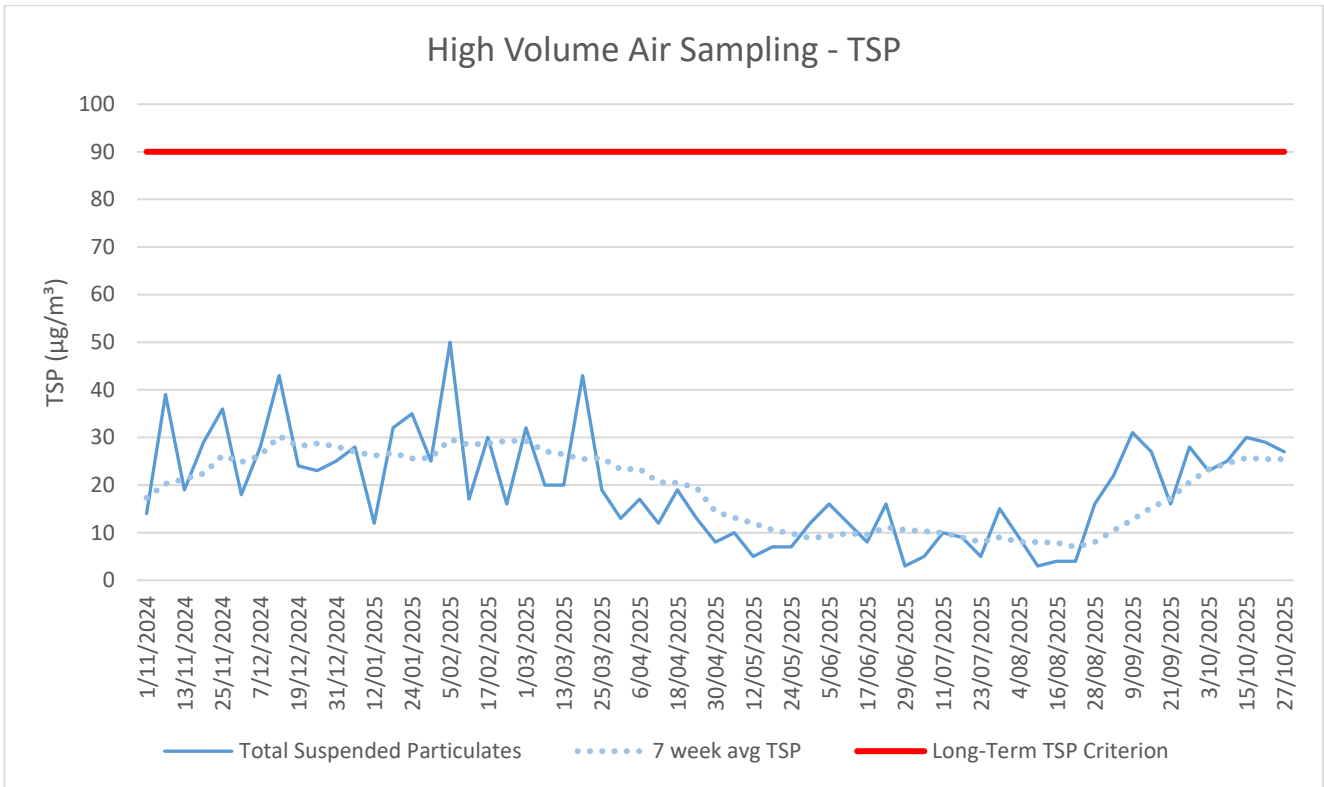


Figure 1 Long-term TSP monitoring trends.

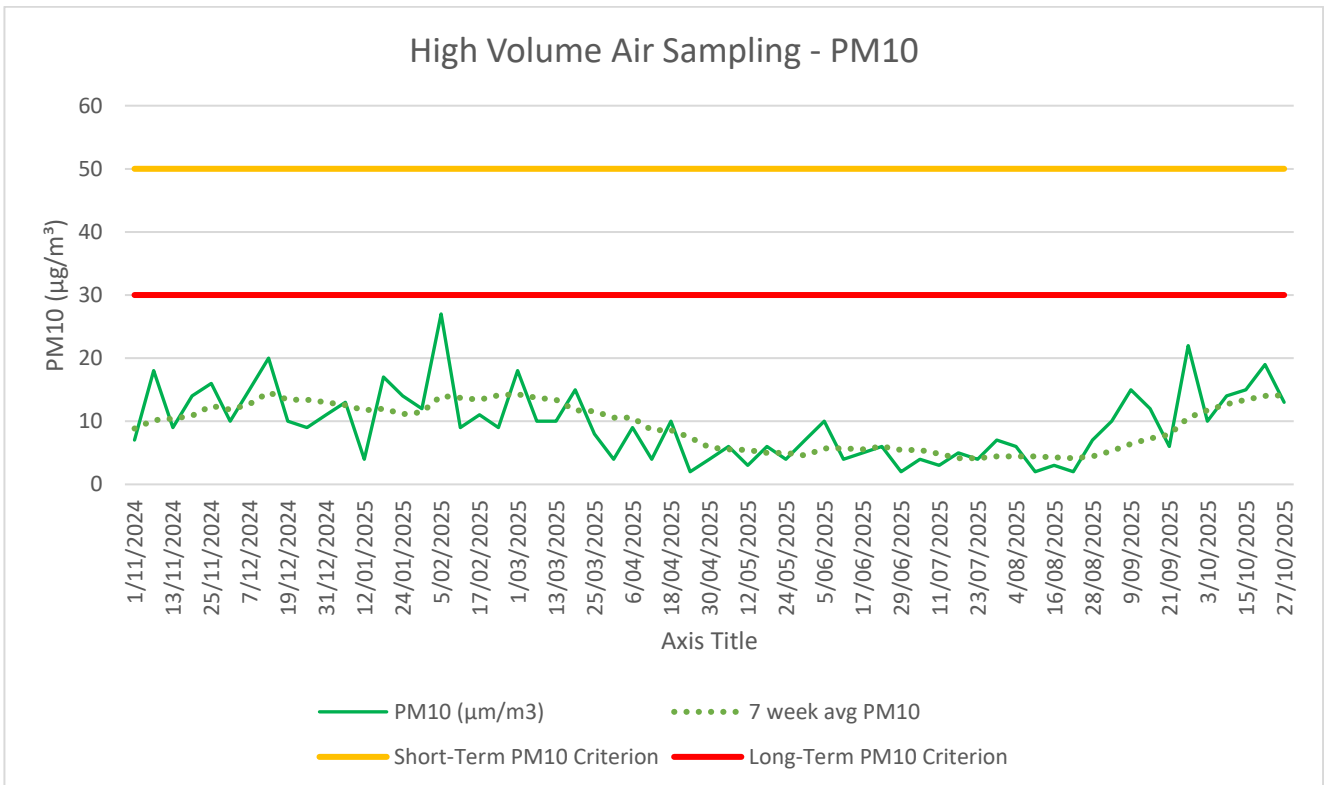


Figure 2 Long-term PM10 monitoring trends.

3.0 Blast Monitoring

Blast monitoring is undertaken for all blasts at the Quarry at the nearest residential location (EPL Monitoring Point 11) to ensure that air blast overpressure and ground vibration remain within the compliance limits, as summarised by **Table 9**; with the monitoring results summarised by **Table 10**.

There were two blasts undertaken during the Reporting Period, which were observed to be within compliance limits, as summarised by **Table 10**.

Table 9 *Blasting Airblast Overpressure and Ground Vibration Criteria (MP09-0175 & EPL 20611).*

Location	Airblast Overpressure (dB(L))	Ground Vibration (mm/s)	Allowable Exceedance
Private Residence B	120	10	0%
EPL Monitoring Point ID 11	115	5	5% over 12-month reporting period.

Table 10 *Blasting Monitoring Results.*

Date	Time	Location	Airblast Overpressure (dB(L))	Ground Vibration (mm/s)
03/10/2025	12:32	RL105	n/t	n/t
21/10/2025	12:33	RL105	n/t	n/t

*Not triggered = n/t
 Ground Vibration < 0.5 mm/s
 Overpressure < 108 dB(L)

4.0 Noise Monitoring

Noise monitoring is undertaken in accordance with the EPL and NSW Planning approved Noise Management Plan, which requires attended noise monitoring to be conducted on a quarterly basis.

No noise monitoring was undertaken during the Reporting Period.

5.0 Surface Water Monitoring

Water monitoring is undertaken in accordance with the EPL and NSW Planning approved Water Management Plan, with daily monitoring of surface water being discharged from the Quarry via the licenced discharge points in accordance with Condition L2 and M2 of the EPL.

There was one discharge event that occurred during the Reporting Period are summarised by **Table 11**.

The discharge event was compliant with the limits provided by the Consent and EPL, including Total Suspended Solids (TSS) below 40 mg/L and pH within the range of 6.5 to 8.5.

Table 11 *Discharge Water Monitoring Results.*

Date	pH	Turbidity (NTU)	Total Suspended Solids, TSS (mg/L)	Oil and Grease	Discharge Type
LDP 1 – Dam 1					
-	-	-	-	-	-
LDP 2 – Dam 2					
29/10/2025	7.0	19	10	Not Visible	Controlled
LDP 3 – Dam 3					
-	-	-	-	-	-

6.0 Weather Station Monitoring

The Quarry operates and maintains a permanent meteorological monitoring station to record weather parameters including temperature, wind speed and direction, solar radiation, and rainfall. **Figure 3** below outlines the weather records for the Reporting Period.



Monthly Weather Summary

Site: **Karuah Quarry Complex**
 Month: **October 2025**

Date	Day	Temperature @ 2m			Temperature @ 10m			Winds			Solar Radiation		Rain ² mm
		Max ¹	Min ²	Ave ¹	Max ¹	Min ²	Ave ¹	Max Gust ¹	Ave Speed ¹	Dir Ave ¹	Max ¹	Ave ¹	
		°C	°C	°C	°C	°C	°C	km/h	km/h	deg	W/m ²	W/m ²	
1	Wed	29.2	14.1	20.5	27.6	16.2	21.2	22.5	14.9	169	780.8	200.0	0.0
2	Thu	26.8	7.5	16.9	26.6	8.9	17.1	34.3	20.8	170	769.2	214.8	0.0
3	Fri	27.0	8.8	18.1	25.7	10.9	18.3	49.7	25.9	243	809.2	232.7	0.2
4	Sat	25.5	8.0	15.8	24.5	8.7	15.8	30.8	17.7	204	804.9	228.5	0.0
5	Sun	23.3	9.4	15.1	20.8	9.9	14.7	23.7	17.3	172	959.9	191.5	0.0
6	Mon	30.8	11.3	19.5	29.2	13.3	20.1	23.7	15.9	202	831.7	237.2	0.0
7	Tue	34.1	16.3	22.1	33.4	16.3	21.9	35.5	21.8	169	984.1	126.4	0.8
8	Wed	23.9	14.9	18.9	22.6	16.0	19.0	17.8	11.8	185	807.4	102.9	0.2
9	Thu	35.5	15.8	23.7	33.8	17.4	24.3	56.8	35.0	206	847.4	210.6	1.2
10	Fri	30.1	13.7	21.5	29.2	14.7	21.8	45.0	29.3	217	908.3	104.4	0.0
11	Sat	31.0	14.5	21.8	29.4	15.7	21.8	26.0	16.5	218	1003.3	220.5	0.0
12	Sun	32.3	10.6	20.3	31.0	12.2	21.1	37.9	26.3	232	838.2	248.8	0.0
13	Mon	32.3	12.8	22.9	31.1	13.8	22.8	34.3	24.6	231	958.2	189.9	0.0
14	Tue	26.8	11.0	18.2	24.0	11.6	17.5	35.5	24.8	155	851.7	254.0	0.0
15	Wed	27.8	9.9	18.4	26.8	11.2	18.5	24.9	17.6	221	849.1	258.4	0.0
16	Thu	29.7	14.4	21.4	27.2	15.1	20.9	27.2	20.2	127	856.6	257.8	0.0
17	Fri	33.2	15.7	23.2	30.4	16.3	22.9	24.9	14.9	192	839.2	245.8	0.0
18	Sat	34.0	17.6	23.4	32.0	17.6	23.1	42.6	26.4	189	1052.4	170.8	12.8
19	Sun	23.8	11.2	16.6	21.2	11.6	16.2	24.9	17.2	177	1020.7	187.8	0.0
20	Mon	28.2	14.5	20.2	26.2	15.5	20.0	26.0	18.1	206	880.8	249.4	0.0
21	Tue	36.1	18.9	25.2	34.4	19.0	25.2	30.8	16.0	164	841.7	236.3	0.0
22	Wed	25.9	17.7	21.2	23.8	18.1	20.4	27.2	16.0	128	806.7	245.2	0.0
23	Thu	40.1	17.9	28.7	39.2	19.3	28.8	50.9	29.2	225	894.2	206.1	0.0
24	Fri	24.4	13.4	18.8	21.9	13.9	18.3	33.1	21.4	136	1115.0	183.1	0.0
25	Sat	29.0	11.5	18.7	25.8	12.0	18.0	39.0	21.9	175	1010.7	235.8	0.0
26	Sun	24.1	11.2	16.9	22.2	12.1	17.0	14.2	9.2	224	727.4	123.8	0.0
27	Mon	29.8	13.5	21.1	28.2	14.1	21.4	24.9	16.3	208	1024.2	165.2	0.0
28	Tue	30.2	12.3	18.5	27.9	12.7	17.9	48.5	28.4	112	1060.7	167.2	1.0
29	Wed	17.8	12.0	13.4	16.5	11.9	13.1	23.7	17.7	157	450.0	50.3	27.8
30	Thu	20.1	11.6	15.6	18.8	11.8	15.5	17.8	12.2	169	590.8	108.9	0.2
31	Fri	24.9	11.9	17.2	22.1	12.4	16.8	21.3	15.9	166	1144.9	182.4	0.0
Ave or Total		28.6	13.0	19.8	26.9	13.9	19.7	31.5	20.0	185.4	881.3	194.7	44.2
High		40.1	18.9	28.7	39.2	19.3	28.8	56.8	35.0	225	1144.9	258.4	27.8
Low		17.8	7.5	13.4	16.5	8.7	13.1	14.2	9.2	127	450.0	50.3	0.0
Notes: 1. Values are for the 24 hour period from 9am to 9am next day.												No. rain days >1mm:	3
2. Values are for the 24 hours to 9am.													

Figure 3 Weather Records Summary during the Reporting Period.

7.0 Production Data

Monthly monitoring of sales and truck movements are summarised by **Table 12**.

Table 12 Quarry Production Data.

Month	Truck Movements	Quarry Product Sales (t)
Jan-25	1,822	54,080
Feb-25	3,048	95,968
Mar-25	3,001	95,438
Apr-25	2,044	63,662
May-25	2,174	65,786
Jun-25	3,087	93,552
Jul-25	2,964	88,839
Aug-25	1,773	53,267
Sep-25	3,045	89,707
Oct-25	3,419	107,258
Progressive Annual Total	26,377	807,557

8.0 Reporting

8.1 Reportable Environmental Incidents

During the Reporting Period, no reportable environmental incidents occurred at the Quarry.

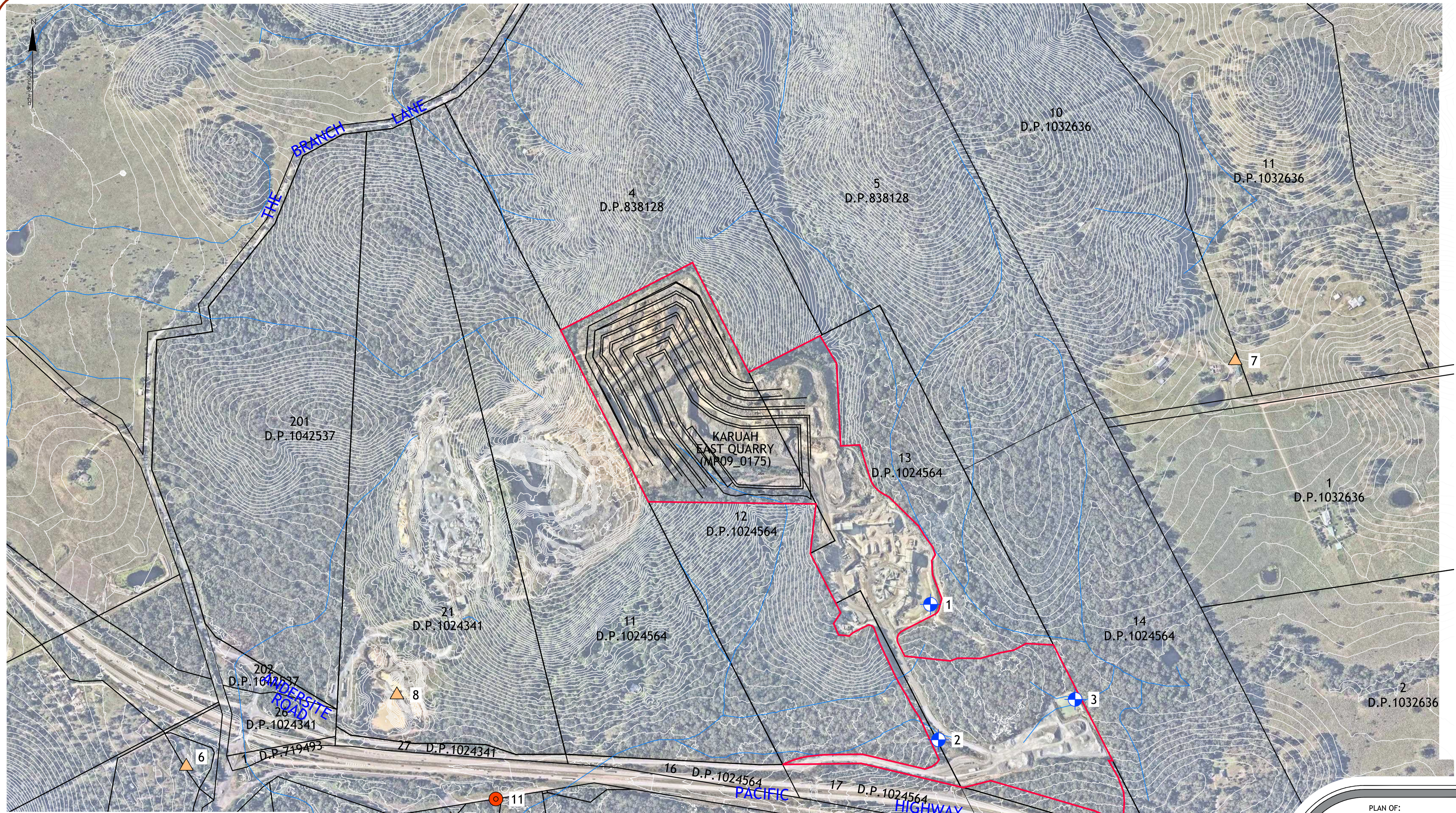
8.2 Reportable Non-Compliances

During the Reporting Period, no reportable non-compliances were identified at the Quarry.

8.3 Community Complaints

During the Reporting Period, no community complaints were received by the Quarry.

Appendix 1 – EPL 20611 Monitoring Locations



EPA IDENTIFICATION POINTS ^				
No.	TYPE	EASTING*	NORTHING*	DESCRIPTION
1	DISCHARGE	407 341 m	6 389 325 m	LDP1 (Discharge to Waters from Dam 1)
2	DISCHARGE	407 358 m	6 389 032 m	LDP2 (Discharge to Waters from Dam 2)
3	DISCHARGE	407 654 m	6 389 119 m	LDP3 (Discharge to Waters from Dam 3)
12	MONITORING	406 300 m	6 388 858 m	DDG1 Air Quality Sensitive Receiver
13	MONITORING	406 430 m	6 388 808 m	DDG2 Air Quality Sensitive Receiver
14	MONITORING	405 726 m	6 388 974 m	DDG3 Air Quality Sensitive Receiver
15	MONITORING	408 002 m	6 389 854 m	DDG4 Air Quality Sensitive Receiver
16	MONITORING	406 183 m	6 389 129 m	DDG5 Air Quality Sensitive Receiver
9	MONITORING	406 434 m	6 388 809 m	B HVAS Air Quality Sensitive Receiver
11	MONITORING	406 398 m	6 388 903 m	Air Blast Monitor

*COORDINATES SHOWN ARE PROVIDED BY HQPL & ARE ON GDA2020 DATUM

ver.	date	comment	surveyed	drawn	checked	pm	co-ordinate information	level information	scale (A1 original size)	page
A	11.06.2020	INITIAL EPL PLAN	--	Z.J.	M.R.	M.R.	CO-ORDINATE SYSTEM: M.G.A. ZONE 56	DATUM: A.H.D.	0 100 200m	1 OF 1
B	24.07.2023	UPDATED EPL BOUNDARY	--	Z.J.	M.R.	M.R.	FOR PLAN CONTENT GDA94	ORIGIN OF LEVELS: LIDAR DATA	SCALE: 1:4000 (FULL)	
C	17.05.2024	UPDATED MONITORING LOCATIONS	HQPL	Z.J.	M.R.	M.R.	ORIGIN OF CO-ORDINATES: P.M.	CONTOUR INTERVAL: 2.0 m		
D	20.05.2024	UPDATED LDP NAMING & POINTS	HQPL	Z.J.	M.R.	M.R.				

^ MONITORING POINTS HAVE BEEN PROVIDED BY HUNTER QUARRIES PTY LTD. REFER TO PLAN 'KARUAH HARD ROCK QUARRY ENVIRONMENTAL MONITORING LOCATIONS - FIGURE 1' BY SLR CONSULTING AUSTRALIA - REFERENCE: 633.HQP00.0030 DATED 23/06/2014.

PLAN OF:
ENVIRONMENTAL
PROTECTION LICENCE
(EPL 20611)
KARUAH EAST QUARRY

location:
LOT 12 D.P.1024564,
LOT 13 D.P.1024564
BLUE ROCK CLOSE,
KARUAH, NSW, 2324

council: MID COAST

dwg ref: 11819-EPL-002-D

client:



central coast office ph: (02) 4305 4300
hunter office ph: (02) 4978 5100
sydney office ph: (02) 8046 7411

www.adwjohanson.com.au