



Karuah Hard Rock Quarry
ABN: 15 093 914 937
Hunter Quarries Pty Ltd
Andersite Road, Karuah NSW 2324

W: www.hunterquarries.com.au
E: admin@hunterquarries.com.au
T: 02 4050 0304
P: PO Box 3284, Thornton NSW 2322

Karuah Hard Rock Quarry

Community Consultation Report

H2 2024



Contents

Contents	2
Definitions	3
1.0 Introduction.....	4
1.1 Background	4
1.2 Community Consultation Report	4
2.0 Air Quality Monitoring.....	5
3.0 Blast Monitoring	5
4.0 Noise Monitoring	6
4.1 Attended Noise Monitoring	6
4.2 Unattended Noise Monitoring	6
5.0 Water Monitoring	7
5.1 Surface Water	7
5.2 Discharge Compliance	7
6.0 Production.....	8
7.0 Reporting.....	8
7.1 Environmental Incidents	8
7.2 Non-Compliances	8
7.3 Community Complaints.....	8
7.4 Management Plans	8
7.5 Audits	9
7.6 Other Environmental Matters.....	9
Appendix 1 – Environmental Monitoring Locations	10

Definitions

Definition	Meaning
CCC	Community Consultative Committee
CCR	Community Consultation Report
the Consent	Development Consent, DA 265-10-2004
the Department	Department of Planning, Housing and Infrastructure
EMS	Environmental Management Strategy
EMP	Environmental Monitoring Program
EPA	NSW Environmental Protection Authority
EPL	Environmental Protection Licence, EPL 11569
DDG	Depositional Dust Gauge
GLC	Great Lakes Council (former)
HQPL	Hunter Quarries Pty Ltd
IEA	Independent Environmental Audit
LDP	Licensed Discharge Point
MCC	MidCoast Council
PIRMP	Pollution Incident Response Management Plan
the Quarry	Karuah Hard Rock Quarry
RCP	Rehabilitation and Closure Plan
the Reporting Period	1 July 2024 to 31 December 2024
SWMP	Site Water Management Plan
TSS	Total Suspended Solids

1.0 Introduction

1.1 Background

The former Great Lakes Council (GLC) granted conditional Development Consent (DA 302/1997) for a hard rock quarry, crushing plant and intersection upgrade of the Pacific Highway at Karuah on the 03 December 1997. Hunter Quarries Pty Ltd (HQPL) purchased the site from Mountain Industries in 2002 and has since operated a hard rock quarry at the site, known as the Karuah Hard Rock Quarry (the Quarry). The material extracted at the Quarry is andesite, which produces high-quality concrete, asphalt and civil products, including armour & gabion rock, drainage aggregates, roadbases and other fill materials.

The current Development Consent (DA 265-10-2004) (the Consent) was granted by the Minister for Infrastructure, Planning and Natural Resources on the 3 June 2005, with the approved development including:

- Implementing the remainder of the approved Stage 1 quarry operation;
- Extending the quarry operations into the Stage 2 area;
- Upgrading and using existing infrastructure on site;
- Rehabilitating the site by re-contouring and revegetating exposed surfaces; and
- Producing up to 500,000 tonnes of product a year over the next 22 years.

1.2 Community Consultation Report

In accordance with Schedule 4, Condition 8 of the Consent, HQPL sought expressions of interest from the community to serve as members of a Community Consultative Committee (CCC) in 2007 and again in 2011. On both occasions, the minimum of two expressions of interest were not received, therefore a CCC was not able to be established.

This Community Consultation Report (CCR) has therefore been prepared in accordance with the Communication Strategy developed to satisfy Schedule 4, Condition 10 of the Consent and outlined in the Quarry's Environmental Management Strategy (EMS).

The CCR summarises HQPL's environmental management plans, monitoring results, audit reports and any environmental incidents or complaints that have occurred during the Reporting Period. Once prepared, the CCR is made available to MidCoast Council (MCC), nearby residents and to the public at HQPL's website.

This CCR covers the H2-2024 Reporting Period from 01 July 2024 to 31 December 2024.

2.0 Air Quality Monitoring

HQPL ensure that all practical mitigation measures are used to prevent and minimise emissions generated by the Quarry, to ensure air quality does not exceed the criteria in Schedule 3, Condition 13 of the Consent at any residence on any privately-owned land.

Air quality monitoring is undertaken in accordance with the approved Environmental Monitoring Program (EMP); with the results of the deposited dust monitoring completed for the Reporting Period summarised in **Table 1**.

Monitoring results indicate that for the monitoring period from 28 June 2024 to 30 December 2024, the depositional dust levels recorded at the four Depositional Dust Gauge (DDG) monitoring locations were below the project criterion of 4 g/m²/month over an annual averaging period.

Table 1 *Deposited Dust Monitoring Results.*

Month	Start Date	End Date	DDG1	DDG2	DDG3	DDG4
July 2024	28/06/2024	30/07/2024	1.1	0.8	0.6	0.9
August 2024	30/07/2024	30/08/2024	0.7	0.5	0.7	0.9
September 2024	30/08/2024	30/09/2024	2.2	1.2	1.3	1.2
October 2024	30/09/2024	31/10/2024	1.0	0.7	0.7	5.1*
November 2024	31/10/2024	29/11/2024	1.4	1.1	1.1	1.7
December 2024	29/11/2024	30/12/2024	0.6	1.4	1.3	3.1
Reporting Period Average			1.2	1.0	1.0	2.2
Annual Average Criteria			4.0	4.0	4.0	4.0

**Note: an anomalous exceedance was recorded at DDG4 during the October 2024 monitoring period which was subsequently reported to the NSW Department of Planning, Housing & Infrastructure (the Department), the NSW EPA and surrounding landholders in accordance with the relevant conditions of the Consent and EPL.*

3.0 Blast Monitoring

HQPL conducts blasts in accordance with the Consent and the EPL to minimise nuisance to environment and the surrounding community. Blast monitoring results for the Reporting Period are summarised in **Table 2**.

During the Reporting Period, all blasts were below the project criterion limits of 115 dBL and 5 mm/s for air blast overpressure and ground vibration, respectively, as outlined by the Consent and EPL.

Table 2 *Blasting Monitoring Results*

Date	Time	Airblast Overpressure (dB(L))	Ground Vibration (mm/s)
10/10/2024	13:37	110.9	1.31
06/12/2024	12:24	110.6	1.14

*Not triggered = n/t
 Ground Vibration < 0.5 mm/s
 Overpressure < 108 dB(L)

4.0 Noise Monitoring

HQPL uses all practical mitigation measures to ensure that the operational noise generated by the Quarry does not exceed the criteria stipulated in the Consent and the EPL. Noise monitoring is undertaken in accordance with the Quarry’s EMP.

4.1 Attended Noise Monitoring

Attended noise monitoring was undertaken during November 2024, and the results are summarised in **Table 3**. The results detail all noise sources, including quarry operations, road traffic and/or animals (such as cattle, insects or birds). The attended noise monitoring results are assessed as compliant with the criteria of the Consent and the EPL.

Table 3 *Attended Noise Monitoring Results – November 2024*

Location	Start Date and Time	Wind		Stability Class	Standard limits apply? ¹	Limits, dB	Site levels, dB	Exceedances, dB ¹
		Speed m/s	Direction ³			L _{Aeq,15minute}	L _{Aeq,15minute} ²	L _{Aeq,15minute}
NM2	25/11/2024 8:02	1.8	311	A	Y	48	IA	Nil
NM1	25/11/2024 8:23	1.2	321	A	Y	48	IA	Nil

Notes: 1. Noise emission limits are applicable if weather conditions were within parameters specified in Section 2.5. NA in exceedance column indicates that limits were not applicable due to weather conditions.
 2. Site-only L_{Aeq,15minute} includes modifying factor penalties if applicable.
 3. Degrees magnetic north, “-” indicates calm conditions.

4.2 Unattended Noise Monitoring

Unattended noise monitoring was undertaken during November 2024 at monitoring locations NM1 and NM2, the results are displayed in **Table 4**. The unattended noise monitoring results are assessed as compliant with the criteria of the Consent and the EPL.

Table 4 *Unattended Noise Monitoring Results – November 2024*

Location	Period	Measured noise levels, dB	
		RBL	L _{Aeq,period}
NM1 19-25 November 2024	Day	48	55
	Evening	49	54
	Night	45	53
NM2 19-25 November 2024	Day	58	72
	Evening	51	64
	Night	43	62

Notes: 1. Levels in this table are not necessarily the result of activity at site.

5.0 Water Monitoring

Water monitoring is undertaken in accordance with the Quarry’s Site Water Management Plan (SWMP). This includes six-monthly surveillance and daily discharge monitoring of surface water during discharge events from the licenced discharge point (LDP).

5.1 Surface Water

During the Reporting Period, surface water monitoring was undertaken on 30 September 2024, with monitoring results summarised in **Table 5**.

Table 5 *Surface Water Monitoring Results – Sediment Dam 2.*

Date	Temp (°C)	pH	EC (µS/cm)	Turbidity (NTU)	TSS (mg/L)	Oil & Grease (mg/L)	Total N (mg/L)	Total P (mg/L)
30/09/2024	20.2	7.3	580	23	12	N/V	0.2	<0.05

5.2 Discharge Compliance

Water quality monitoring is undertaken daily during discharge to demonstrate compliance with parameters specified in the EPL. During the Reporting Period, there were 9 days of discharges from our LDP located at Sediment Dam 2, as summarised in **Table 6**.

Each day of discharge complied with the EPL limits for pH, Total Suspended Solids (TSS) and Oil & Grease.

Table 6 *Discharge Monitoring Results – Sediment Dam 2.*

Date	Temp (°C)	pH	EC (µS/cm)	Turbidity (NTU)	TSS (mg/L)	Oil & Grease (mg/L)	Total N (mg/L)	Total P (mg/L)
13/07/2024	17.8	7.4	536	50	21	NV	0.4	<0.05
14/07/2024	17.9	7.2	583	26	10	NV	0.4	<0.05
15/07/2024	18.3	7.4	592	33	22	NV	0.4	<0.05
17/07/2024	16.6	7.4	629	28	22	NV	0.4	<0.05
18/07/2024	16.8	7.1	622	17	5	NV	0.4	<0.05
19/07/2024	21.1	7.5	634	16	8	NV	0.4	<0.05
20/07/2024	21.6	7.5	661	20	20	NV	0.4	<0.05
22/07/2024	21.6	7.4	670	13	6	NV	0.3	<0.05
23/07/2024	18.2	7.2	673	9.4	<5	NV	0.3	<0.05

6.0 Production

Monthly monitoring of sales across the Reporting Period is summarised in **Table 7**. In total there were approximately 90,000 tonnes of product sold, with an associated 2,832 truck movements.

Table 7 Monthly Production Data.

Month	Truck Movements	Quarry Product (tonnes)
July 2024	629	19,502
August 2024	497	14,401
September 2024	504	16,140
October 2024	494	16,648
November 2024	413	12,490
December 2024	295	10,755
Total	2,832	89,936

7.0 Reporting

7.1 Environmental Incidents

During the Reporting Period, no reportable environmental incidents occurred at the Quarry.

7.2 Non-Compliances

During the Reporting Period, HQPL had one reportable non-compliance in relation to air quality, as outlined below:

- Single exceedance of depositional dust during the October 2024 monitoring period. However, the long-term annual average remained well within the compliance criteria.

7.3 Community Complaints

During the Reporting Period, no community complaints were reported to the Quarry.

7.4 Management Plans

During the Reporting Period, the following updates to Management Plans were undertaken:

- Rehabilitation and Closure Plan (RCP) dated April 2024 was approved by the Department on 29 November 2024.
- Environmental Management Strategy and Monitoring Program (EMS&MP) was comprehensively reviewed and consolidated into a single document. The EMS&MP was submitted to the Department on 05 December 2024 and was approved on 08 January 2025.
- Pollution Incident Response Management Plan (PIRMP) was comprehensively reviewed and updated on 06 December 2024.

7.5 Audits

During the Reporting Period, Talis Consultants commenced the 2024 Independent Environmental Audit (IEA) on 04 November 2024, with final submission of the IEA Report and HQPL’s Response to Audit Findings due by 04 February 2024 (i.e. within 3 months of commencement).

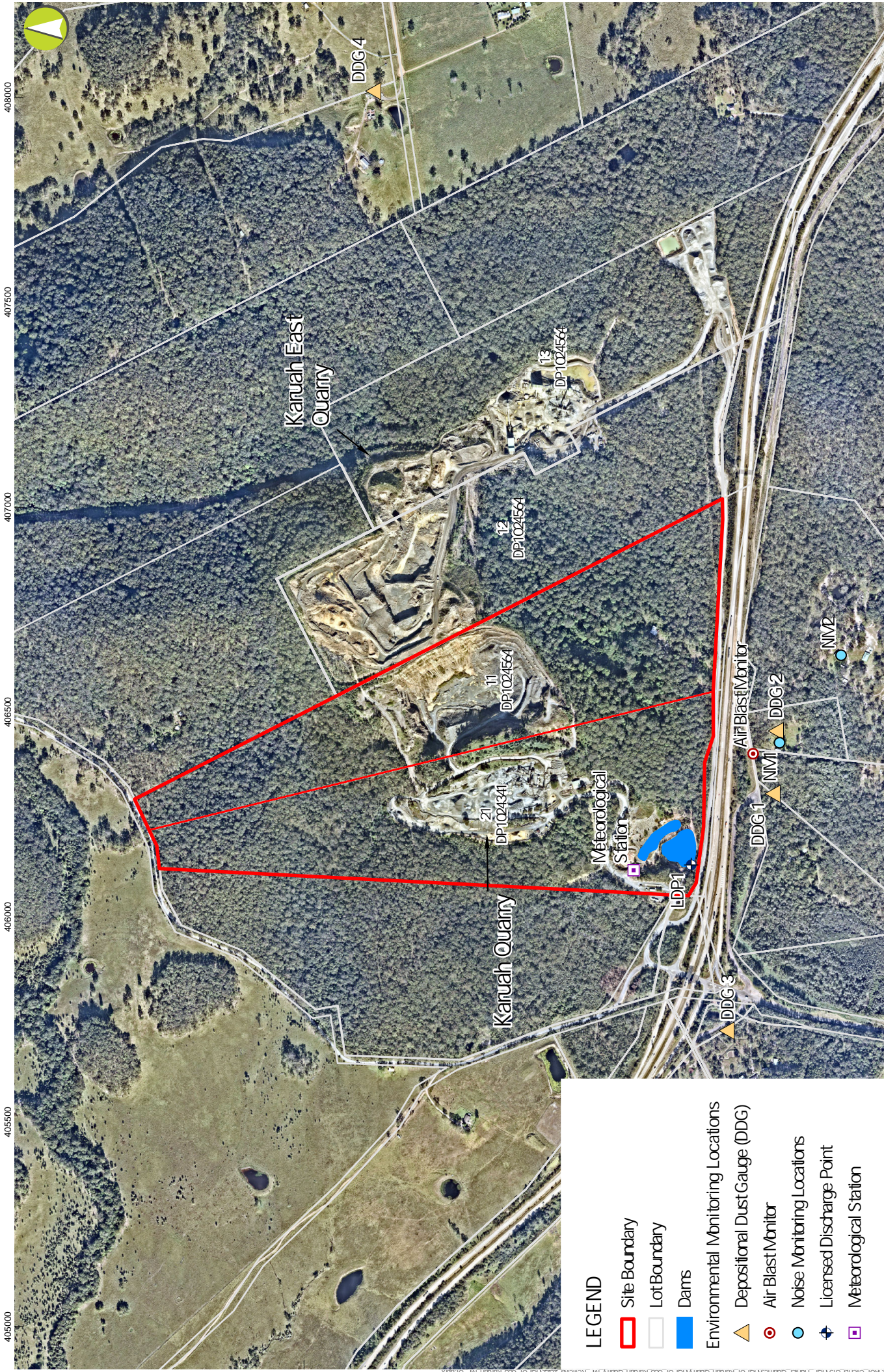
These documents will be uploaded to the HQPL website and a summary of audit outcomes will be provided in the Community Consultation Report for the next Reporting Period (i.e. H1 2025) in July 2025.

7.6 Other Environmental Matters

During the Reporting Period, the five-yearly statutory review of the site’s Environment Protection Licence (the EPL), EPL 11569, was completed by the NSW Environment Protection Authority (EPA). As part of the review, the EPL was varied (dated 06 December 2024) to account for minor amendments to the locations of the site’s Depositional Dust Gauges to minimise the risk of contamination events with organic vegetative matter.

The corresponding variation application to EPL 20611 for the adjacent Karuah East Quarry is currently pending approval by the EPA. The minor relocation works will be completed following receipt of this variation.

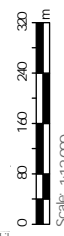
Appendix 1 – Environmental Monitoring Locations



GDA2020 MGA Zone 56
 8/03/2024

LEGEND

- ▭ Site Boundary
- Lot Boundary
- Dams
- Environmental Monitoring Locations**
- ▲ Depositional Dust Gauge (DDG)
- Air Blast Monitor
- Noise Monitoring Locations
- + Licensed Discharge Point
- Meteorological Station



I:\01 Clients GIS\HP_Hunter Quarries\HP01 Karuah Quarry\HP01_003 Karuah Quarry_MP_Reviews_2023\HP01_003 Karuah_MP_01.aprx