

Minutes (DRAFT)

9 September 2024

Project name	Karuah East Quarry - Community Consultative Committee	From	Michael Ulph
Subject	Meeting Minutes – September 2024	Tel	0458 049 847
Date / Time	9 September / 4.05pm	Project no.	2218437
Attendees	Michael Ulph (Chairperson) Scott Ellerton (Karuah East Quarry Pty Ltd) Mat Radnidge (ADW Johnson) Darryn Bosch (Karuah East Quarry Pty Ltd) John Lyall (Port Stephens Shellfish Program) Bob Trotter (Community Representative) Uwe Seil (Community Representative) Goetz Schraer (Community Representative) Wade Cameron (Community Representative)	Apologies	Tessa Hestelow (Community Representative) Janine Reid (North Arm Cove Community Association Incorporated)
Others not present	Karuah LALC Representative (Dave Feeney) Mathew Bell – Mid Coast Council		
Objective	Record discussion and actions from this meeting. Note that the slides presented at the meeting are appended to these minutes. References to slide numbers are also provided in the minutes to enable alignment.		

Agenda Item	Notes
Welcome	<ul style="list-style-type: none"> - Michael Ulph acknowledged the Worimi people as the traditional owners in the region, and paid respect to Elders past, present and future. - Darryn Bosch introduced himself as the new Quarry Manager for KEQ. - All other members of the committee provided introductions to Darryn.
Declaration of Pecuniary Interests	<ul style="list-style-type: none"> - Michael Ulph confirmed that KEQ Pty Limited (KEQPL) is paying GHD (his employer) a fee for Michael to act as the Independent Chairperson. - Mat Radnidge (Mat R) confirmed that KEQPL is paying ADW Johnson (his employer) a fee for Mat to be a member of the CCC. - Scott Ellerton and Darryn Bosch are employees of KEQPL.
Acceptance of Previous Minutes	<ul style="list-style-type: none"> - Draft CCC Meeting Minutes dated 25 March 2024. <ul style="list-style-type: none"> • Moved: John Lyall • Seconded: Mat Radnidge
Correspondence	<ul style="list-style-type: none"> - Draft minutes dated 25 March 2024 were emailed to CCC members by Michael Ulph for review/comment on 19/04/24. No comments were received. CCC Terms of Reference for this meeting were also provided by email. - Email invitations to this meeting.

Agenda Item	Notes
Company Report & Overview of Activities	<p><u>See slides 2 to 4:</u></p> <ul style="list-style-type: none"> - Scott and Mat R described the project in summary, including current approvals, licences, management plans and project history (including previous modifications). - Mat R confirmed that all approvals and management plans are available on the Hunter Quarries website. - A hard copy of the approved MOD 10 plan was made available for CCC viewing. - Scott advised that the approved MOD 10 areas were the blue areas on the figure. Scott also advised where the KEQ viewing area/platform was located that was utilised by the CCC during the earlier site visit (western edge of the quarry pit located at RL135). <p><u>Slide 5:</u></p> <ul style="list-style-type: none"> - MOD 1 (the pink area in the image) provided approval for a nominal disturbance footprint expansion to allow for improved dump truck manoeuvring in the proximity of the primary crusher. - MOD 2 (the orange area in the image) provided approval for additional disturbance area to improve operational safety by separating light and heavy vehicle movements. <p><u>Slide 6:</u></p> <ul style="list-style-type: none"> - MOD 8 provided approval for modified operational noise criteria and mitigation via an enclosed primary crusher with pre-cast concrete and hushclad roof and enclosing of the secondary crusher (north and east elevations) with hushclad. This also improved dust control. - MOD 9 provided approval for extended hours of operation. <p><u>Slide 7:</u></p> <p>Approved Site Plan (MOD 10)</p> <ul style="list-style-type: none"> - MOD 10 is the current Modification approval that was granted in May 2023 by the NSW Department of Planning, Housing and Infrastructure (DPHI). - MOD 10 is awaiting Federal EPBC approval, which is experiencing delay due to high caseloads being experienced by assessment staff. - Meanwhile the management plans are being updated to incorporate the MOD 10 area, and KEQPL are also working on an update to the Environmental Protection Licence (EPL). - Figure 5 is an extract of the approved MOD 10 site plan. <p><u>SLIDES 8 to 10:</u></p> <p>Compliance Monitoring</p> <ul style="list-style-type: none"> - Scott discussed monitoring results January to June 2024 (provided in the below commentary). - Six monthly average wind rose. Typical for the area. Up to 10km/hr. - Recap of environmental monitoring locations. <p><u>Slides 11 to 13:</u></p> <ul style="list-style-type: none"> - Scott provided an overview of air quality results. - Results of the High Volume Air Sampler (HVAS) for Total Suspended Particles (TSP) and PM10 (particulates below 10 microns) were well within

Agenda Item	Notes
	<p>compliance levels, with a downward trend due to increased rainfall. This was similar for Depositional Dust Gauge (DDG) monitoring.</p> <ul style="list-style-type: none"> - Depositional dust was well within the compliance limit of 4g/m²/month. - Michael noted that the air quality monitoring graph was well presented. <p><u>Slides 14 to 17:</u></p> <ul style="list-style-type: none"> - Scott provided an overview of site water management. - The monthly rainfall chart shows near-maximum rainfall over April, May and June 2024 (dark blue) bringing significant water loads around the site. - Scott noted that once a rain event hits approximately 90 mm (design rainfall event depth) within a five-day period, it is difficult for the site to manage with current infrastructure (hence the MOD 11 proposal – refer to later slides). - Dam 1 is the primary water storage for KEQ and provides water for dust suppression. With 3 significant rainfall events, there were three uncontrolled discharge events across 10 days. - Dam 2 – again 3 rainfall events with uncontrolled discharges over 6 days, plus 31 days of controlled discharges. - Dam 3 – with 3 significant rainfall events dam 3 had 51 days of controlled discharge with 3 uncontrolled events. <p><u>Slides 18 & 19:</u></p> <ul style="list-style-type: none"> - Scott provided an overview of noise monitoring results. - Quarterly noise monitoring was completed at the approved noise monitoring locations in the surrounding community on 5 February 2024 (Q1) and 23 & 30 May 2024 (Q2). - Minor exceedance during the May monitoring round. Caused by truck tail gates banging when trucks hit potholes. - KEQPL have actioned this through ‘toolbox talks’ with drivers about safe driving practices and have repaired potholes. - Attended noise monitoring locations are shown on Slide 19. <p><u>Slide 20:</u></p> <ul style="list-style-type: none"> - Scott provided an overview of blast monitoring results and production data. - There have been nine blasts in H1 2024. All blasts were within compliance limits. - Scott advised Production during January 2024 – June 2024 was 658,157 tonnes. - Michael noted the approval is for 1.5 million tonnes, and 658,000 in six months is under the approved amount but increasing. Scott noted that the KEQ is supplying a lot of material to infrastructure projects over the reporting period, including the M1 Pacific Motorway extension to Raymond Terrace. <p><u>Slide 21 & 22:</u></p> <ul style="list-style-type: none"> - Scott advised no community complaints were received during the reporting period, which is a pleasing result. - Scott provided an overview of exceedances & non-compliances during the reporting period. - Scott provided an overview of the water management responses during major rainfall events, including enaction of the PIRMP, water treatment and site works.

Agenda Item	Notes
	<ul style="list-style-type: none"> - Michael checked if CCC members understood what 'floccing' is. - Scott advised that it consists of adding calcium chloride to the water to remove sediment. - Michael advised that this results in cleaner water discharge from the site.
Proposed MOD 11	<p><u>Slide 23:</u></p> <ul style="list-style-type: none"> - This project was introduced at the March 2024 CCC meeting. - No change since the previous CCC meeting. - Scott & Mat R provided a recap of the project: - Engineering design for the approved areas within MOD10 is well advanced. - It has been identified that design improvements can be achieved to reduce gradients from 4-8% (8% can be hazardous) to 2-3%. This will result in flatter and safer working areas. A flatter gradient will also result in vehicles working more efficiently. - MOD 11 will also result in improved surface water management, including: <ul style="list-style-type: none"> • Separation of 'clean' and 'dirty' water storage dams. At present all three dams are 'mixed use' (i.e. storage plus sediment); • Establishment of additional dams upstream to allow batch treatment that will allow for better targeted water quality treatment. This will have a positive effect in the event of uncontrolled discharge during wet weather events; and • Improved water security for operations and dust suppression. - Next steps: <ul style="list-style-type: none"> • Design refinement to be completed – continuing. • Pre-lodgement consultation with NSW DPHI. • A Section 4.55(1A) modification application will be lodged with DPHI. • KEQPL to confirm with CCC once lodged. - The CCC held the following group discussion: <ul style="list-style-type: none"> • Wade suggested this was essentially a constructed wetland approach to water management. Scott agreed. Scott noted that the proposal will result in improved discharge volume and quality. Scott noted design is in accordance with the industry standard for surface water management 'the Blue Book'. • Mat R noted MOD 11 will also help with water security for operations and dust suppression. • Wade asked what the total capacity would be. Scott advised that at present, storage is approximately 12 megalitres; and MOD 11 will increase storage to approximately 20 megalitres if approved. Wade notes that this is a good outcome as it is his opinion that there is not enough water storage available at the KEQ. • Wade asked if licencing will be necessary. Mat R noted that Maximum Harvestable Rights Dam Capacity (MHRDC) (for water harvesting) is calculated based on landholding size and that the MOD 11 design will be within the MHRDC limit. Therefore no licencing is anticipated to be necessary. • Wade asked if opposition was expected. Mat R doesn't foresee any significant issues given the nature of the modification and noting that water storage will be within MHRDC.

Agenda Item	Notes
	<ul style="list-style-type: none"> Wade asked if it made sense to go beyond and obtaining a water licence for increased storage. He doesn't think there is enough water. Scott noted that at this time KEQPL intend to store as much water as possible within MHRDC limits.
Acquisition of Lot 4, 1613 The Branch Lane, Karuah	<p><u>Slide 24:</u></p> <ul style="list-style-type: none"> Scott and Mat R advised that KEQPL recently acquired Lot 4, to continue HQPL's standard practice of purchasing buffer land when the opportunity arises to reduce the potential for land use conflict. Establishing a buffer around quarry operations is a positive outcome. Scott extended the open offer to any direct neighbours to continue to reach out if they needed or wished to sell their properties.
Karuah Resource Operations Project (KROP)	<p><u>Slides 25 & 26:</u></p> <ul style="list-style-type: none"> Scott and Mat R recapped the KROP proposal. KROP was introduced to the committee at the March 2024 CCC meeting and there has been no change since this time. HQPL are planning to adaptively reuse the Karuah Quarry site / infrastructure to establish the KROP, following expiry of the Karuah Quarry consent in 2027. This will be limited to the land owned by HQPL, which is Lot 21 DP 1024341. Lot 11 DP 1024564 is owned by a separate party (Wedgerock Pty Ltd) and will not form part of the KROP proposal. KROP will generally include: <ul style="list-style-type: none"> Maintain and continue the use of existing infrastructure on the Karuah Quarry site. Resource Recovery facility (eg. brick, tiles, road pavement, asphalt, concrete) to meet increasingly mandated sustainability goals from government agencies and other key customers eg. TfNSW, Council and Hunter Water. This facility is like 'concrush'. 15% recycled material blending is a mandate for many tenders. Product import for processing and blending from other KEQPL affiliated operations including Karuah East, Tea Gardens and Gosforth Rhyolite Quarries. Tonnages and throughputs to be confirmed, but there will be no increase from the currently approved Karuah Quarry operations (500,000 tonnes per annum). Nominal vegetation removal. KROP will improve HQPL's ability to contribute to (and meet client specifications for important projects such as the Newcastle Inner-City Bypass and the M1 Pacific Motorway extension to Raymond Terrace). The site is well suited for the KROP noting excellent access, proximity to other HQPL operations and minimal clearing needed. Next steps, Mat R noted: <ul style="list-style-type: none"> Project details and design to be refined – continuing. Approval pathway to be confirmed (likely State Significant Development). Scoping reporting and discussions with NSW DPE. Obtain Secretary's Environmental Assessment Requirements (SEARs).

Agenda Item	Notes
	<ul style="list-style-type: none"> • Identify and appoint a team of specialist technical experts. • Commence consultation (community and agency). • Prepare an EIS and lodge a Development Application. • Public exhibition will occur post lodgement. <p>- The CCC held the following group discussion:</p> <ul style="list-style-type: none"> • Michael asked if the same crushing equipment would be used for the imported materials. Scott confirmed yes that same (or similar) equipment will be reused. • Darryn mentioned the facility could make Recycled Road Base (RRB). • Wade asked if there would be stricter regulations, particularly with any contaminants being imported with imported materials to be mixed in. <p>Mat R responded noting that it will be a whole new application and if approved, the consent will be contemporary (particularly when compared with the 2004 KQ consent) and will include stringent ongoing management requirements.</p> <p>Scott noted that it will be similar in detail to the new Brandy Hill Quarry consent, by way of example.</p> <ul style="list-style-type: none"> • Mat R said HQPL would be looking to maintain the KQ consent limits at around 500,000 tonnes of material per annum. • Wade asked if Lot 11 will be involved. <p>Mat R advised no because Lot 11 is not owned by HQPL. KROP is being considered over Lot 21 which is owned by HQPL.</p> <p>Mat R noted that any KQ rehab requirements on Lot 11 would be the responsibility of HQPL in accordance with the KQ consent unless altered by the separate Karuah South Quarry proposal (by others) over Lot 11.</p> <p>Wade asked what the status of Karuah South is. Mat R noted that this is not a HQPL matter but the NSW DPHI website notes that the project is still under assessment.</p> <ul style="list-style-type: none"> • Michael asked if the Karuah Red proposal (as discussed at earlier CCC meetings) was now shelved. <p>Scott noted that HQPL may consider the project at a later date, noting the company is committed to the red (rhyodacite) resources in the area.</p> <p>Mat R noted that HQPL's priorities have changed for now, with KQ reuse a greater priority. Scott noted it was not rational to operate Karuah Red as a standalone quarry with existing infrastructure next door at KQ.</p> <p>Mat R noted that if pursued in the future, Karuah Red will be subject to a new application process (with approval pathway to be determined at that time).</p> <ul style="list-style-type: none"> • Michael noted that the Hunter Joint Organisation of Councils is looking at Circular Economy projects. • General discussion about other material recycling projects.
General Business	<p>- Michael noted that the CCC Terms of Reference need to reviewed by the CCC every 12 months and this will be done at the next 6 monthly meeting.</p>

Agenda Item	Notes
	<ul style="list-style-type: none"> - Wade asked what the question was last meeting about acid sulphate soils. John had asked the question, as the Port Stephens Shellfish program have a keen interest in why oysters are dying. John noted that this appeared to be associated with development at Medowie flowing into Pipeclay Creek. - Goetz advised that he was resigning from the CCC as he was moving to Tea Gardens. Mat R and Michael both thanked Goetz for his ongoing interest and participation. Mat R noted that Goetz had been attending since the CCC's first meeting in 2016.
Next CCC meeting and site inspection to be scheduled.	<ul style="list-style-type: none"> - Next meeting scheduled for March 2025. Michael to confirm details and issue calendar invites.
Meeting close	<ul style="list-style-type: none"> - The meeting was closed at 4.45pm.

DRAFT

**Karuah East Quarry
Community Consultative Committee
September 2024**

Project Overview

- Project Summary
- Environmental Monitoring & Performance
- Project Modifications
- General Business



Project Summary

- Approved by the NSW Independent Planning Commission on 17 June 2014.
 - Operational since 2017.
 - Quarrying operation is permitted on site until 31 December 2034.
 - The extraction, processing and transport of up to 1.5 million tonnes of andesite material per year.
 - Establishment of quarry plant, infrastructure, and roads.
 - Total permitted disturbance area of 40.18 Ha.
 - Establishment of a biodiversity offset area.
 - Conditions apply to manage potential impacts associated with quarry operation including:
 - Air Quality
 - Blasting
 - Noise
 - Soil and Water
 - Transport
 - Biodiversity
 - Heritage
 - Emergency Response
-

Summary of Approvals/Licenses in Place

- Project Approval – MP09_0175 (State Significant Development)
 - Issued by the NSW Minister for Planning and Public Spaces.
- Environmental Protection and Biodiversity Conservation Act (EPBC Approval) 2014/7282
 - Issued by the Federal Government Department of Agriculture, Water and Environment
- Environment Protection Licence 20611
 - Issued by NSW Environment Protection Authority

Summary of Management Plans in Place

- Biodiversity Offset Area
 - Tetratheca Juncea Translocation
 - Noise
 - Blast
 - Air Quality
 - Water
 - Transport
 - Heritage
 - Landscape and Rehabilitation
 - Environmental Management Strategy
 - Pollution and Incident Response
-

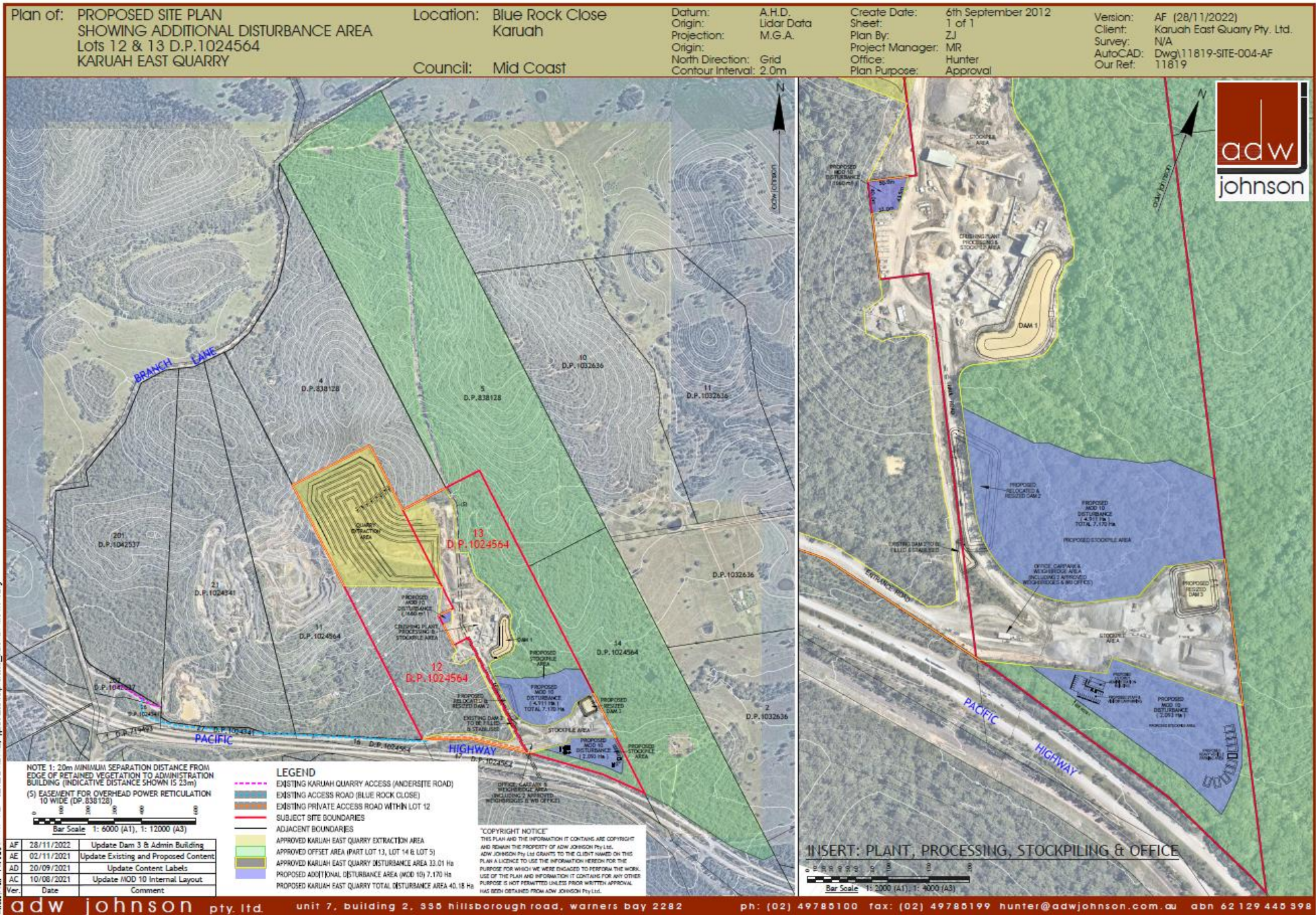


Figure 1: Karuah East Quarry – Approved Site Plan (inc Mod10)

Project Overview

- **MOD 1 (approved 27 April 2018)**
Nominal expansion to the quarry footprint area by 2,500 m² to allow for improved vehicle maneuvering and operational safety in the proximity of the crushing plant and quarry infrastructure (refer pink on below figure).
- **MOD 2 (approved 19 December 2018)**
1.13 Ha increase to the site disturbance area to allow for improved surface water management and improved operational safety (refer orange in below figure).
- **MODs 3-7**
Withdrawn



Figure 2: KEQ MOD1 (pink) and MOD2 (orange) areas

Project Overview

- **MOD 8 (Approved 22 December 2020)**
Modified operational noise criteria in line with latest noise policy (*NSW Noise Policy for Industry 2017*) and formalised industry best practice noise mitigation measures installed at the quarry.
 - **MOD 9 (Approved 02 December 2021)**
Extended hours of operation for the KEQ. The Modification 9 application was supported by a Noise Impact Assessment (NIA) (EMM Consulting 2021).
-



Figure 3: KEQ Primary Jaw Crusher Enclosure



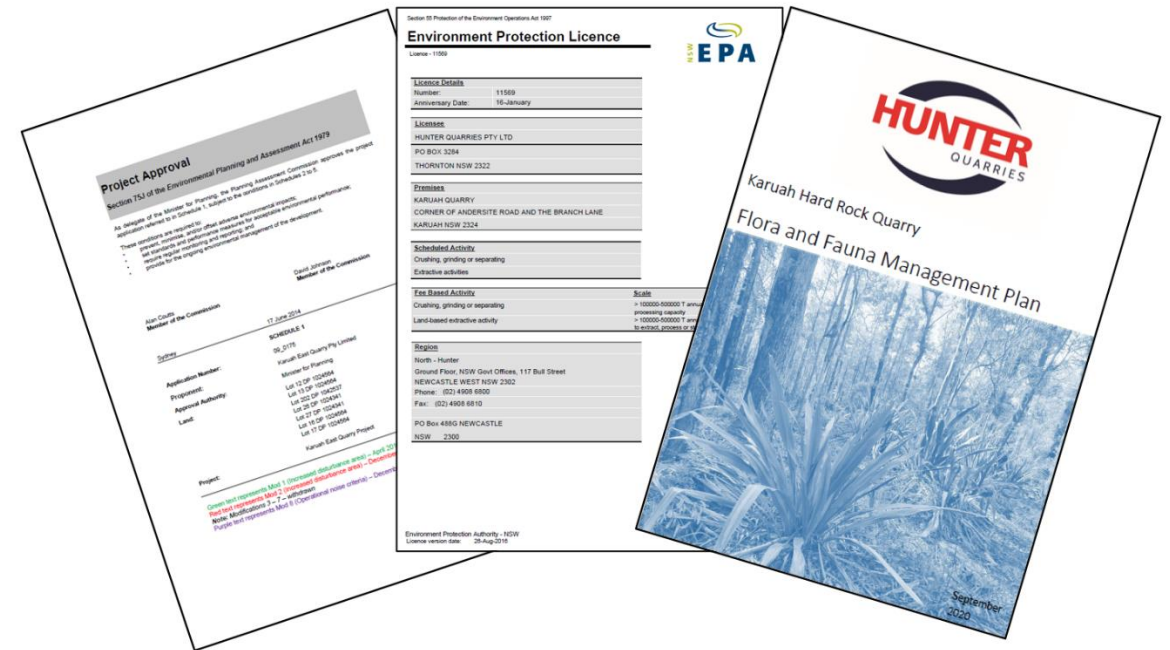
Figure 4: KEQ Secondary (Cone) Crusher Enclosure

Compliance Monitoring

In line with the Project Approval and approved management plans, KEQ undertake environmental monitoring for:

- Air quality
- Noise
- Blasting
- Water

Data covers the reporting period of the first half (H1) of 2024.



Wind Rose Report for: Karuah East - 15 Min Data

VWDIR Vector Wind Dir and VWSP Vector Wind Spd in km/h

Period: 2024-01-01 00:00 to 2024-07-01 00:00

Direction the Wind is Blowing To

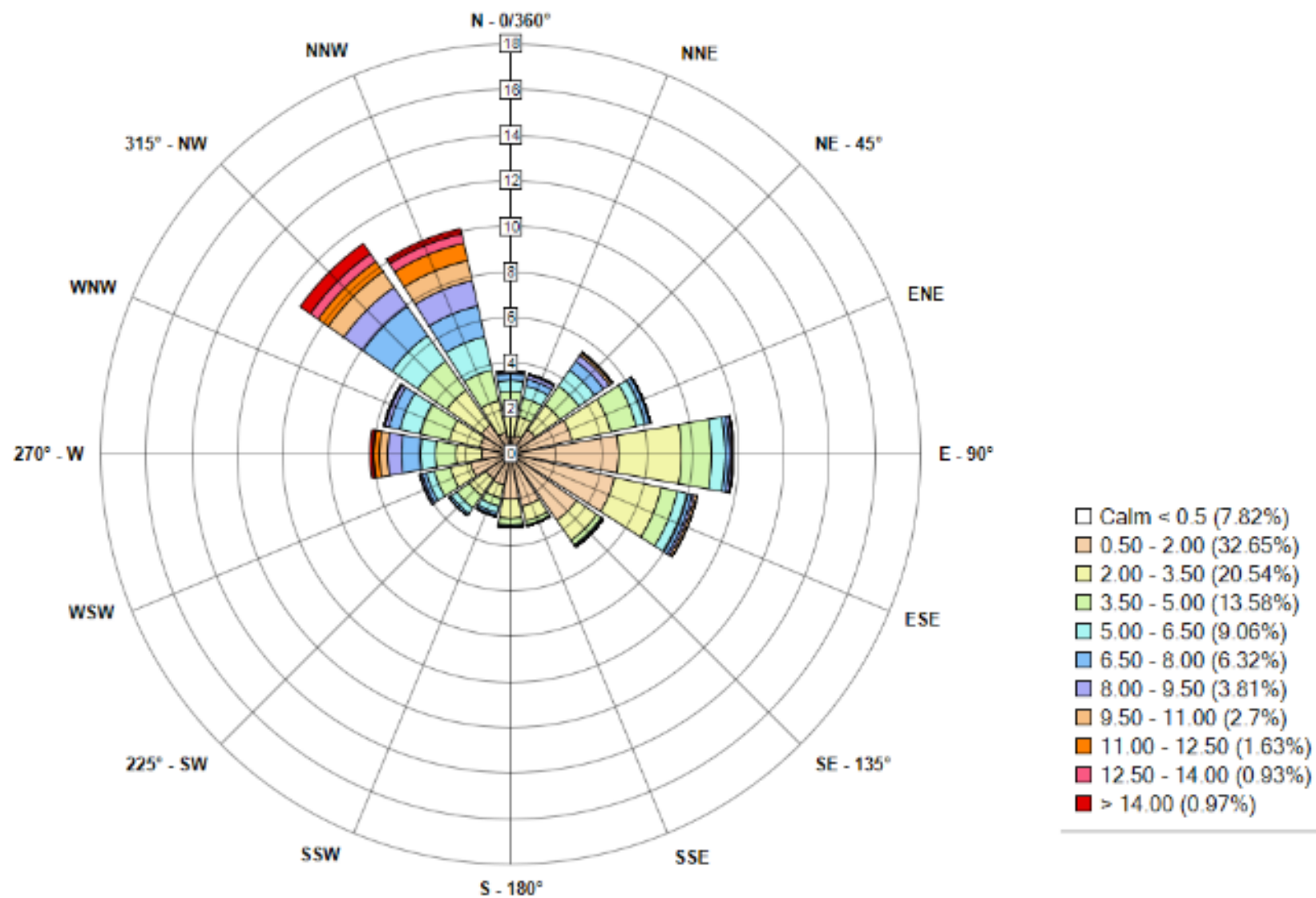




Figure 7: KEQ Environmental Monitoring Locations

H1 2024 TSP Monitoring Data

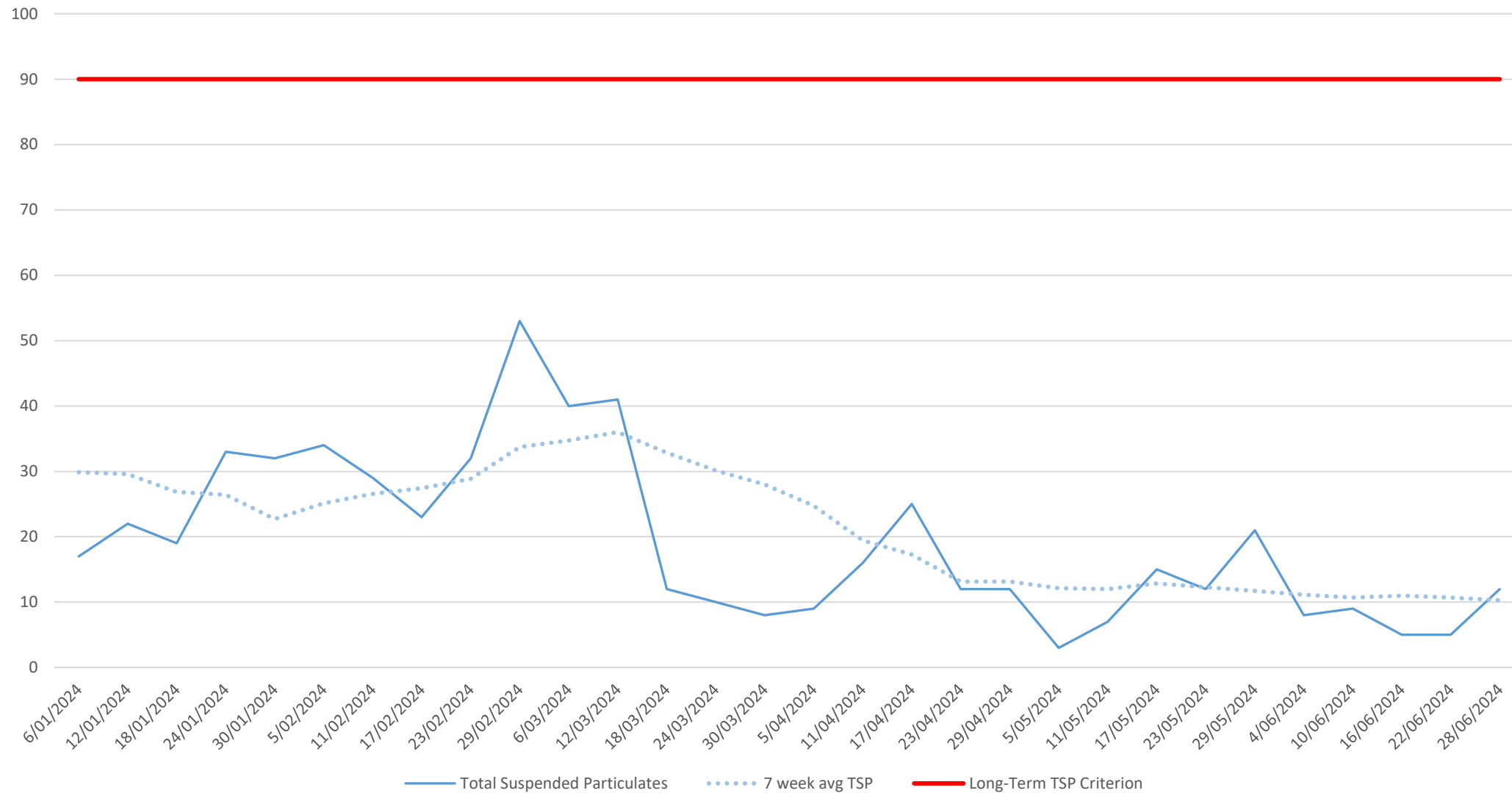


Figure 8: Air quality monitoring – HVAS (TSP)

All TSP results within compliance limits.

H1 2024 PM10 Monitoring Data

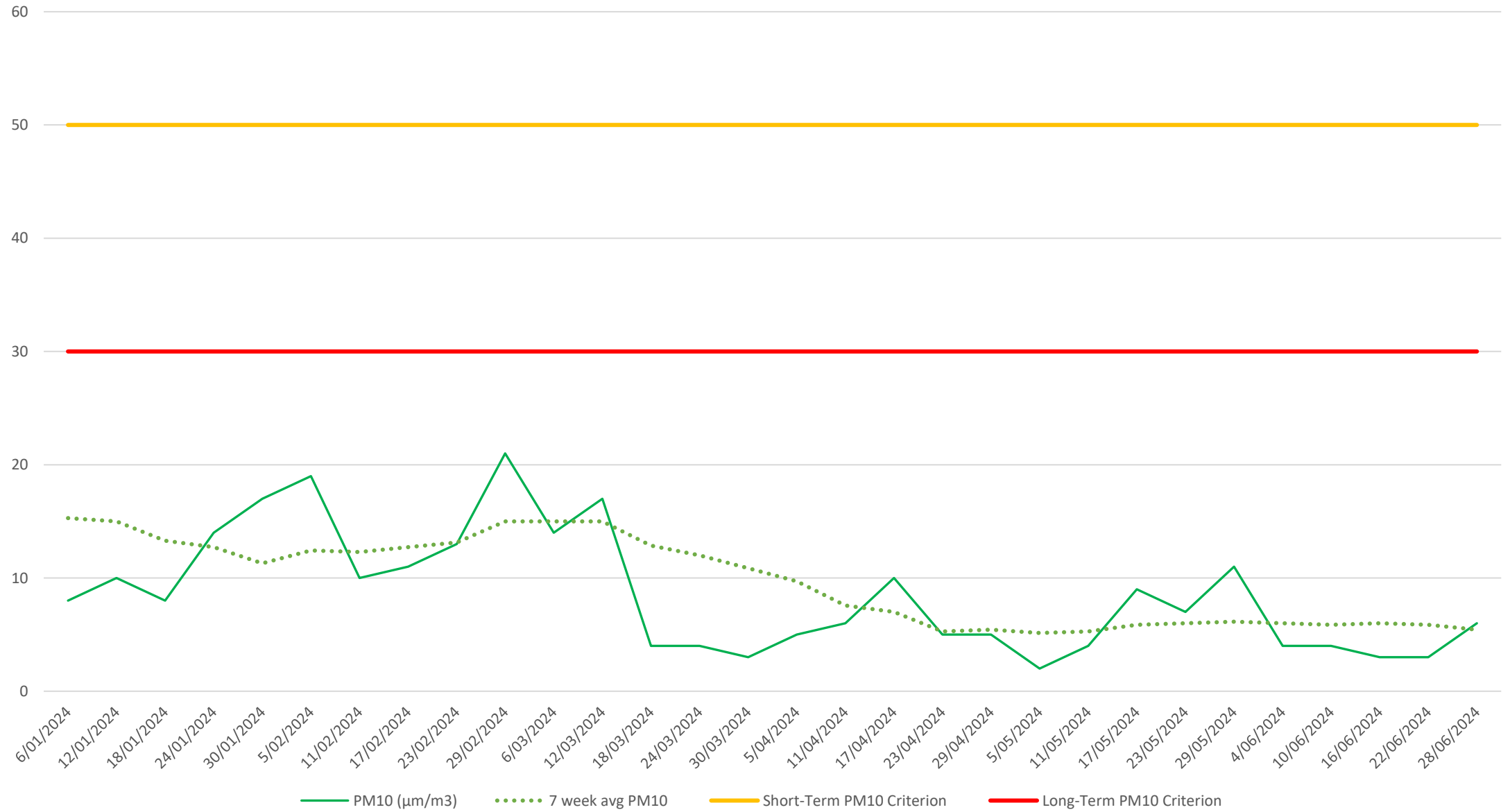


Figure 9: Air quality monitoring – HVAS (PM10)

All PM10 results within the short-term compliance limit.

H1 2024 Depositional Dust Results

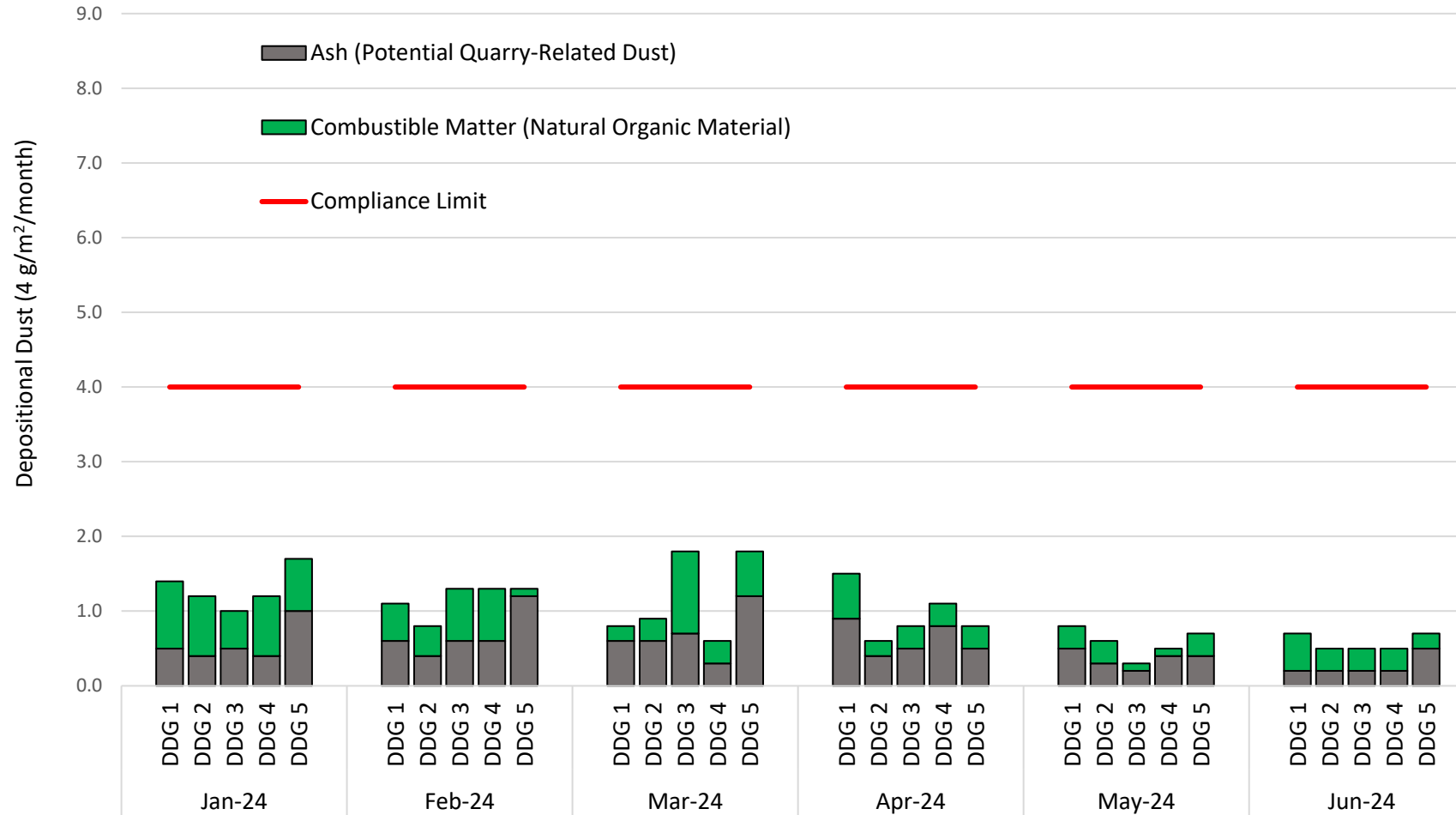


Figure 10: Air quality monitoring - DDG

All DDG results within compliance limit of 4 g/m²/month.

Monthly Rainfall

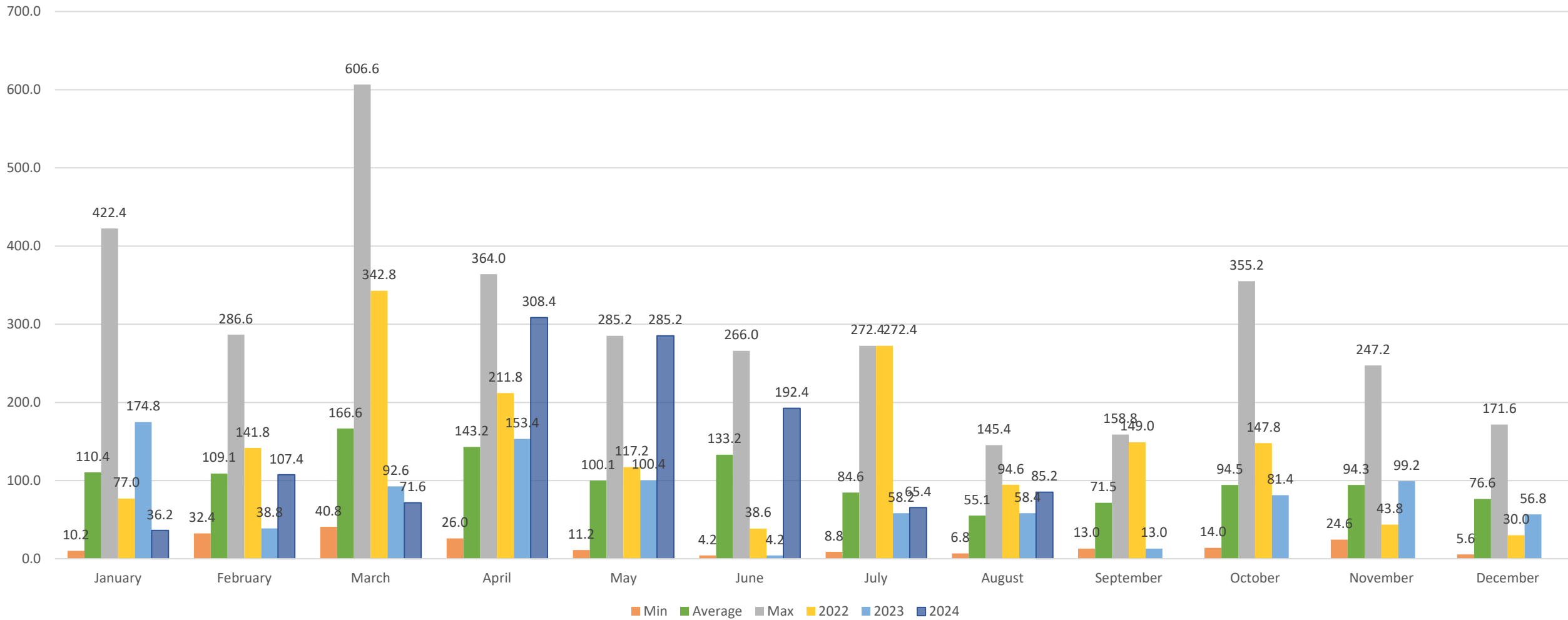


Figure 11: KEQ Meteorological Station – Monthly Rainfall

Near maximum monthly rainfall totals for April, May and June 2024.

Dam 1 (Licensed Discharge Point 1)

The capacity of Dam 1 is 12 ML and is designed to manage runoff from operational areas of the quarry. The dam serves as the primary water storage for KEQ and provides water for operational purposes such as dust suppression.

Dam 1 discharges into the Bulga Creek catchment to the east of the site.

During H1 2024, there was 3x significant rainfall events (defined as greater than the 5x day 95th percentile design storm depth of 90.6 mm).

This resulted in three uncontrolled discharge events across 10x days – incidents slide.



Figure 12: Dam 1

	pH	EC ($\mu\text{S}/\text{cm}$)	Turbidity (NTU)	TSS (mg/L)	Oil and Grease
No. Samples	10	10	10	10	10
Min	7.2	127	800	350	NV
Mean	7.4	276	>1000	774	NV
Max	7.6	387	>1000	1640	NV

Dam 2 (Licensed Discharge Point 2)

The capacity of Dam 2 is 0.5 ML and is designed to manage runoff from the existing weighbridge area.

Dam 2 discharges into the Yalimbah Creek catchment to the south of the site.

There was a total of **31** days of discharging during H1 2024. Daily water quality monitoring was undertaken, with results summarised below.

There was 3x significant rainfall events (defined as greater than the 5x day 95th percentile design storm depth of 90.6 mm).

This resulted in three uncontrolled discharge events across 6x days – incidents slide.



Figure 13: Dam 2

	pH	EC ($\mu\text{S}/\text{cm}$)	Turbidity (NTU)	TSS (mg/L)	Oil and Grease
No. Samples	31	31	31	31	31
Min	6.7	384	105	5	NV
Mean	7.1	1542	942	45.9	NV
Max	8.8	5450	7940	280	NV

Dam 3 (Licensed Discharge Point 3)

The capacity of Dam 3 is 2 ML and is designed to manage runoff from the existing stockpile area.

Dam 3 discharges into the Bulga Creek catchment to the east of the site.

There was a total of **51** days of discharging during H1 2024. Daily water quality monitoring was undertaken, with results summarised below.

There was 3x significant rainfall events (defined as greater than the 5x day 95th percentile design storm depth of 90.6 mm).

This resulted in three uncontrolled discharge events across 3x days – incidents slide.



Figure 14: Dam 3

	pH	EC ($\mu\text{S}/\text{cm}$)	Turbidity (NTU)	TSS (mg/L)	Oil and Grease
No. Samples	51	51	51	51	51
Min	6.8	191	3	5	NV
Mean	7.2	676	36	21	NV
Max	8.6	1280	130	96	NV

Noise Monitoring

KEQ engaged acoustic consultants EMM to conduct quarterly noise monitoring at five locations surrounding the quarry (map on next slide) across the morning shoulder, day and evening.

- Q1 2024 – 05 February 2024
- Q2 2024 – 23 & 30 May 2024

Karuah East Quarry – minor exceedance during the May 2024 monitoring round – incident slide.

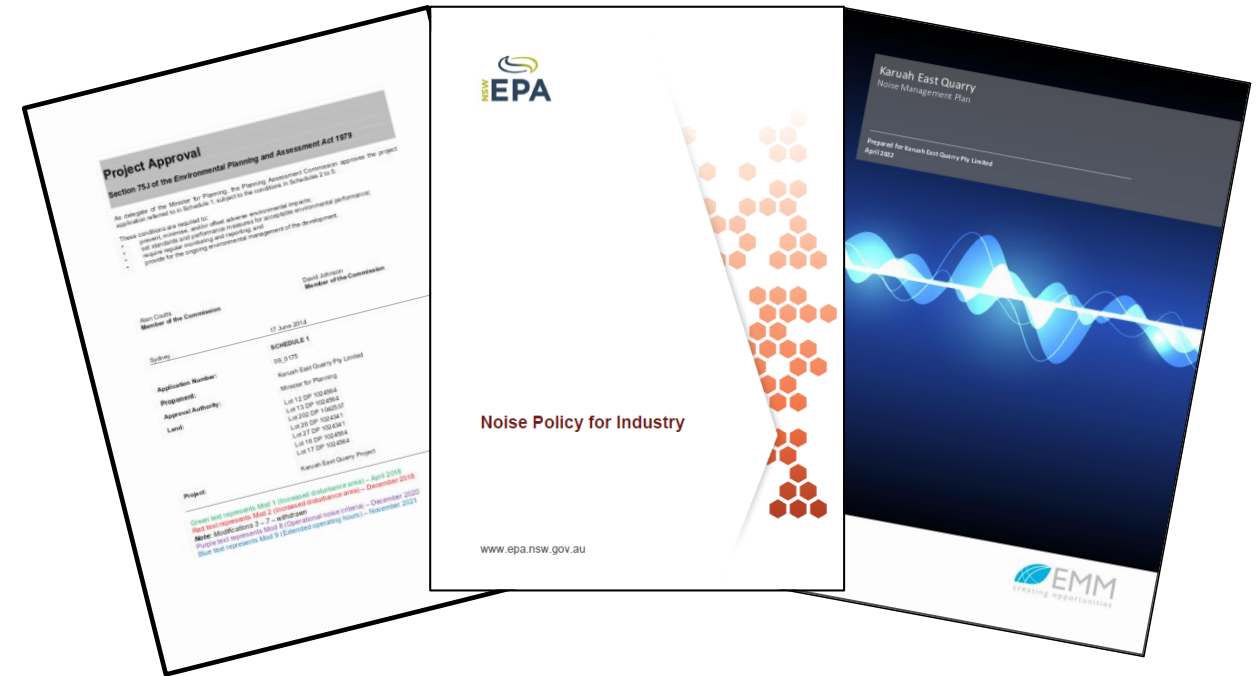


Figure 15: KEQ Project Approval; Noise Policy for Industry (NSW EPA, 2017); KEQ Noise Management Plan.



- KEY**
- Site boundary
 - A Attended noise monitoring location
 - Approved disturbance area
 - Major road
 - Minor road
 - Vehicular track
 - Watercourse/drainage line
 - Cadastral boundary
 - Waterbody
 - NPWS reserve
 - State forest

Attended noise monitoring locations

Karuah East Quarry
 Quarterly attended noise monitoring
 Figure 4.1



**Figure 16: KEQ
 Attended Noise
 Monitoring
 Locations (EMM
 Consulting, 2021)**

\emmsw\EMM\2022\2022\2022\2022 - Karuah East Quarry Noise Monitoring - 2022\18.6150\02 - Maps\0001 - Site Location - 2022\20.718 - 01.mxd 18/07/2022

Source: EMM (2022); ADW Johnson (2020); DFSI (2017); KSM (2012); GA (2011); ASGC (2008)



Blast Monitoring

- During H1 2024, 9x blasts have been completed.
- Monitoring is undertaken to measure compliance with the Project Approval limits for airblast overpressure and ground vibration.
- Monitoring is conducted at the closest receptor to the blast.
- All blasts were within compliance limits.

Production and Sales

- Jan24: 109,693 tonnes
 - Feb24: 82,999 tonnes
 - Mar24: 92,042 tonnes
 - Apr24: 91,145 tonnes
 - May24: 97,554 tonnes
 - Jun24: 93,576 tonnes
 - **TOTAL: 658,157 tonnes**
-



Figure 17: Post blast photo

Complaints Register

Table 1: Complaints Register H1 2024

Month	Environmental Factor	Comments
–	–	–

Exceedances and Non-Compliances

Table 2: Non-compliance register H1 2024:

Date	Condition Summary	Notes
05 – 08 Apr 2024	<p>Uncontrolled discharges of sediment-laden water 200.8 mm of rainfall over the event. Moderate non-compliant discharges from Dams 1 to 3.</p>	<p>5x day 95th percentile design storm depth of 90.6 mm. PIRMP enacted & resident / agency notified. Dams flocculated and ESC measures deployed.</p>
21 – 23 Apr 2024	<p>Uncontrolled discharges of sediment-laden water 97.4 mm of rainfall over 36 hours. Minor non-compliant discharges from Dams 1 & 2 only.</p>	
02 – 04 Jun 2024	<p>Uncontrolled discharges of sediment-laden water 91.6 mm of rainfall over 36 hours. Minor non-compliant discharges from Dams 1 to 3.</p>	
Q2 2024	<p>Noise exceedance 23 May 2024 La-max reading of 55 dB, above the limit of 52 dB. Recorded at Halloran Road at 6.14 am during the morning shoulder period (5.00 to 7.00 am). La-max = 1-minute sample period (instantaneous max noise).</p>	<p>Assessed as truck tailgate noise arriving to site whilst empty, potentially hitting potholes at the entrance gate.</p> <p>Truck drivers and operational staff subject to toolbox talks regarding driving at appropriate speeds through noise-sensitive features.</p>

Proposed MOD 11 – Earthworks & Surface Water Management System Improvement

Recap:

- **No change since previous meeting CCC meeting (March 2024).**
- Detailed design for earthworks and surface water management is progressing for the approved MOD 10 development.
- Preliminary findings suggest that a further MOD application (MOD 11) will likely be required to accommodate the optimised design outcomes, which include:
 - Current approved grades in the MOD 10 area generally range from 4% to 8%. Design optimisation will result in less steep grades at approximately 2% across the MOD 10 area. This will result in a safer and more efficient stockpiling area.
 - Further surface water management systems upgrade including separation of sediment dams and water storage dams (currently 'mixed use' dams are implemented). This is consistent with industry best practice management and will result in:
 - A treatment 'train' that will allow for better-targeted water quality treatment; and
 - Improved water security for operations and dust suppression.

Next steps:

- **Design refinement to be completed – continuing.**
 - Pre-lodgment consultation with NSW DPHI.
 - A section 4.55(1A) modification application will be lodged with the NSW DPHI to formalise the design changes.
-

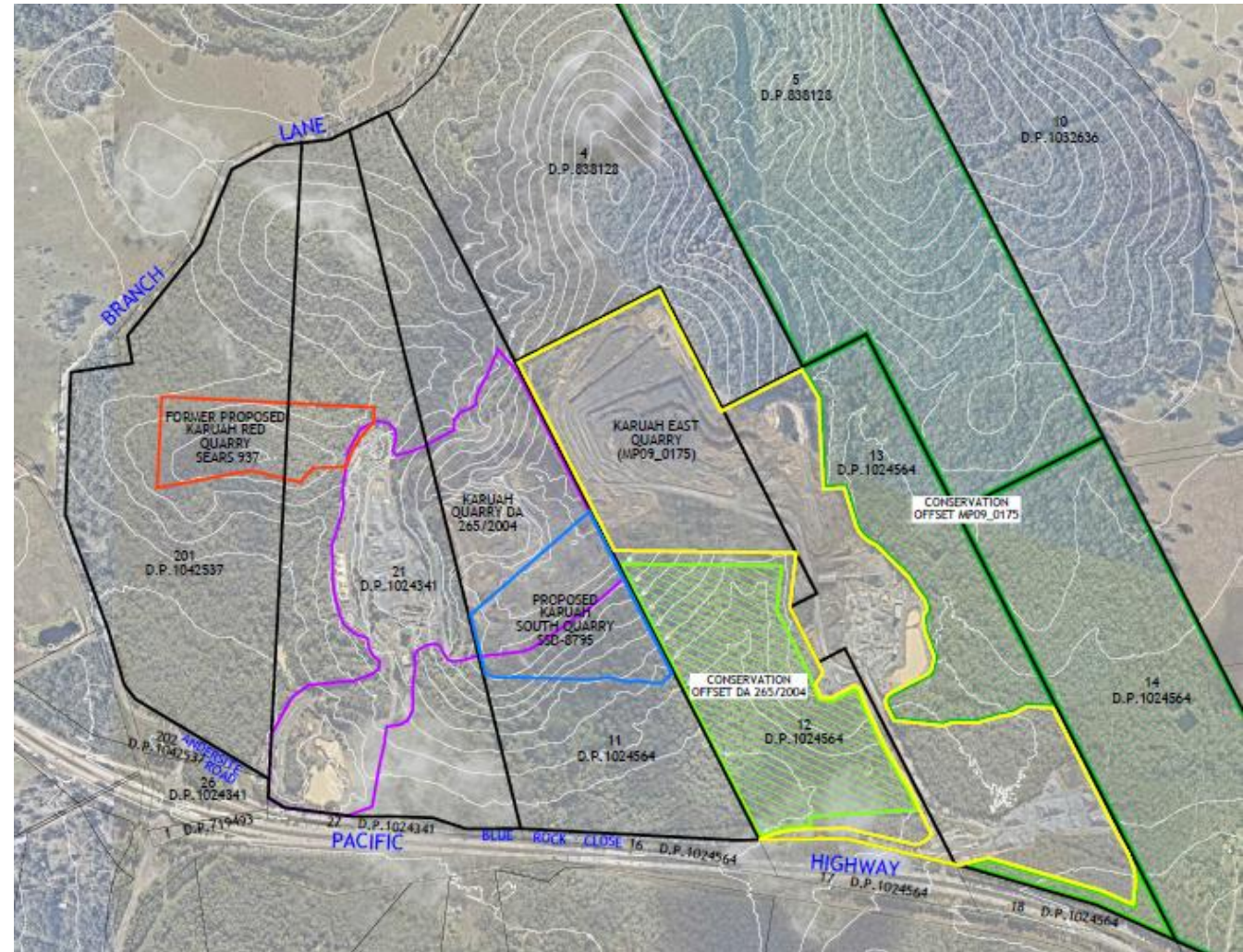
Acquisition of Lot 4, 1613 The Branch Lane, Karuah

- In late 2023, Hunter Quarries acquired Lot 4.
- Acquired the property to continue buffer-land to avoid potential development of a sensitive receiver.
- Continuation of existing practice of acquiring neighbouring properties within proximity of the quarry for buffer land.



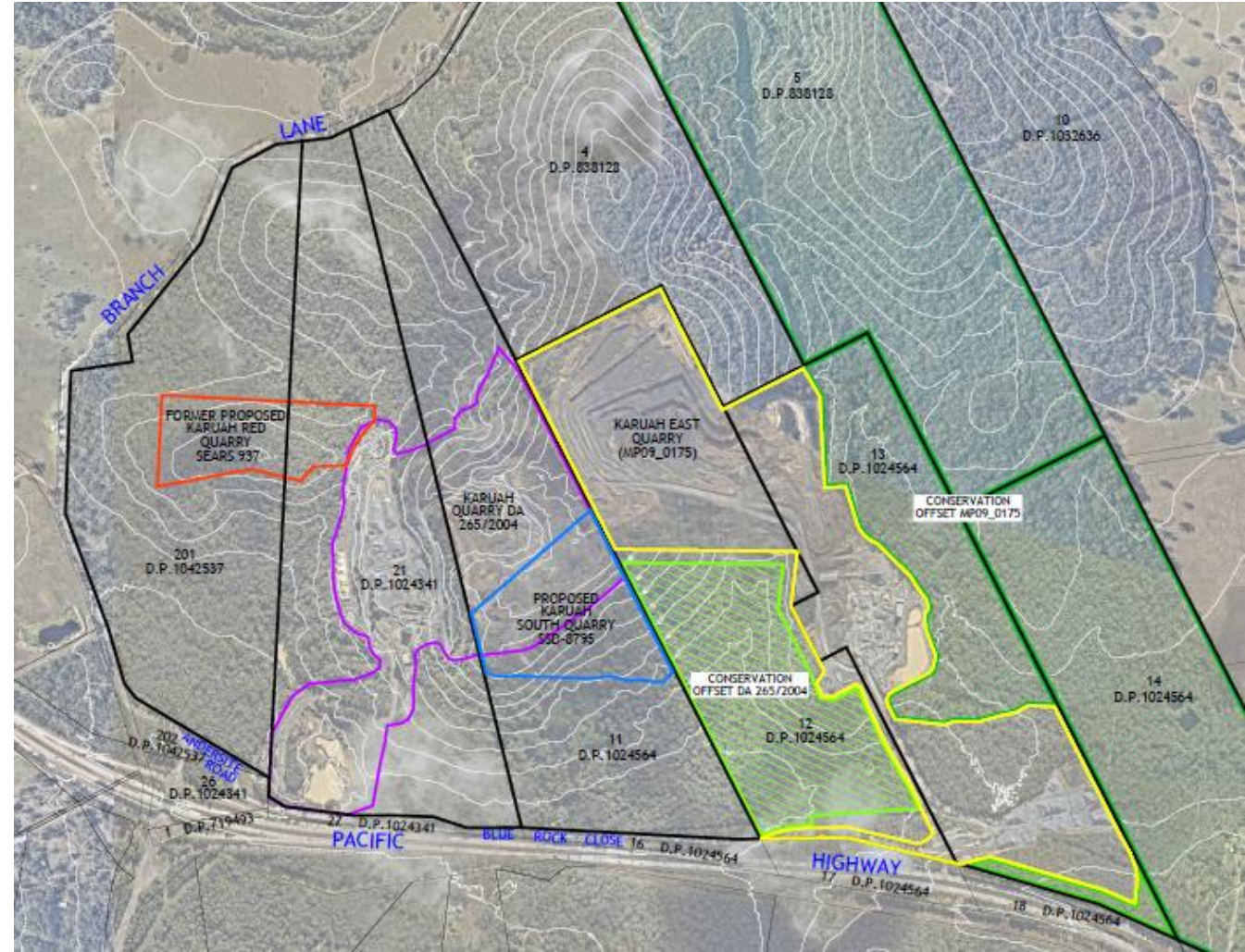
RECAP – Preliminary Details: Karuah Resource Operations Project (KROP)

- Introduced at previous CCC meeting (March 2024).
- This project will improve HQPL's ability to contribute to (and meet client specifications) important infrastructure projects such as the Newcastle Inner-City Bypass and the M1 Pacific Motorway extension to Raymond Terrace.
- Maintain and continue the use of existing site infrastructure on Lot 21 DP 1024341, including:
 - Plant and processing equipment;
 - Hardstand, haul roads and stockpile areas;
 - Electrical supply infrastructure;
 - Weighbridge, workshop and offices; and
 - Sediment dam (former red quarry).
- Product import from other HQPL operations including Karuah East Quarry, Tea Gardens Quarry and Gosforth Rhyolite Quarry.
- Resource recovery to meet increasingly mandated sustainability goals from Government agencies (e.g. TfNSW, Hunter Water and Councils).
- Imported material to be blended, processed and stockpiled.
- Tonnages and throughputs to be confirmed, however there will be no increase from currently approved Karuah Quarry operations.
- Nominal material vegetation removal.



UPDATE – Next Steps: Karuah Resource Operations Project (KROP)

- Project details and design to be refined – continuing.
- Approval pathway to be confirmed (likely State Significant Development).
- Obtain SEARs.
- Identify and appoint a team of specialist technical experts.
- Commence consultation (community and agency).
- Prepare an EIS and lodge a Development Application.



General Business:

- Community Call Line – **1800 329 161**
 - Centralised contact point for the neighbours & local community.
 - For sales, continue to contact 02 4050 0304.

CONTACT

**Hunter Quarries
Blue Rock Close
Karuah NSW 2324**

Sales (02) 4050 0304
karuah@hunterquarries.com.au

OPENING HOURS

Monday – Friday: 7am-4pm
Saturday: 7am-12pm

Community Call Line 1800 329 161

Questions & Discussion
