



Karuah Hard Rock Quarry
ABN: 15 093 914 937
Hunter Quarries Pty Ltd
Andersite Road, Karuah NSW 2324

W: www.hunterquarries.com.au
E: admin@hunterquarries.com.au
T: 02 4050 0304
P: PO Box 3284, Thornton NSW 2322

Karuah Hard Rock Quarry

Community Consultation Report

H1 2024



Contents

Contents	2
Definitions	3
1.0 Introduction.....	4
1.1 Background	4
1.2 Community Consultation Report	4
2.0 Air Quality Monitoring.....	5
3.0 Blast Monitoring	5
4.0 Noise Monitoring	6
4.1 Attended Noise Monitoring	6
4.2 Unattended Noise Monitoring	6
5.0 Water Monitoring	7
5.1 Surface Water	7
5.2 Discharge Compliance	7
6.0 Production.....	7
7.0 Reporting.....	8
7.1 Environmental Incidents	8
7.2 Non-Compliances	8
7.3 Community Complaints.....	8
7.4 Management Plans	8
7.5 Audits	8
Appendix 1 – Environmental Monitoring Locations	9

Definitions

Definition	Meaning
CCC	Community Consultative Committee
CCR	Community Consultation Report
the Consent	Development Consent, DA 265-10-2004
the Department	Department of Planning, Housing and Infrastructure
EMS	Environmental Management Strategy
EMP	Environmental Monitoring Program
EPA	NSW Environmental Protection Authority
EPL	Environmental Protection Licence, EPL 11569
DDG	Depositional Dust Gauge
GLC	Great Lakes Council (former)
HQPL	Hunter Quarries Pty Ltd
LDP	Licensed Discharge
MCC	MidCoast Council
the Quarry	Karuah Hard Rock Quarry
the Reporting Period	1 January 2024 to 30 June 2024
SWMP	Site Water Management Plan

1.0 Introduction

1.1 Background

The former Great Lakes Council (GLC) granted conditional Development Consent (DA 302/1997) for a hard rock quarry, crushing plant and intersection upgrade of the Pacific Highway at Karuah on the 03 December 1997. Hunter Quarries Pty Ltd (HQPL) purchased the site from Mountain Industries in 2002 and has since operated a hard rock quarry at the site, known as Karuah Hard Rock Quarry (the Quarry). The material extracted at the Quarry is andesite, which is a hard, blue rock used for various purposes such as road base material, construction aggregate, aggregate used for concrete batching, drainage works, fill, landscaping and other uses.

Development Consent (DA 265-10-2004) was granted by the Minister for Infrastructure, Planning and Natural Resources on the 3 June 2005, with the approved development including:

- Implementing the remainder of the approved Stage 1 quarry operation;
- Extending the quarry operations into the Stage 2 area;
- Upgrading and using existing infrastructure on site;
- Rehabilitating the site by re-contouring and revegetating exposed surfaces; and
- Producing up to 500,000 tonnes of product a year over the next 22 years.

1.2 Community Consultation Report

In accordance with Schedule 4, Condition 8 of the Consent, HQPL sought expressions of interest from the community to serve as members of a Community Consultative Committee (CCC) in 2007 and again in 2011. On both occasions, the minimum of two expressions of interest were not received, therefore a CCC was not able to be established.

This Community Consultation Report has therefore been prepared in accordance with the Communication Strategy developed to satisfy Schedule 4, Condition 10 of the Consent and outlined in the Quarry's Environmental Management Strategy (EMS).

The Community Consultation Report summarises HQPL environmental and community management plans, monitoring results, audit reports and any environmental incidents or complaints that have occurred during the reporting period. Once prepared, the Community Consultation Report is made available to MidCoast Council (MCC), nearby residents and to the public at HQPL's website.

2.0 Air Quality Monitoring

HQPL ensure that all practical mitigation measures are used to prevent and minimise emissions generated by the Quarry operation, to ensure air quality does not exceed the criteria in Schedule 3, Condition 13 of the Consent at any residence on any privately-owned land.

Air quality monitoring is undertaken in accordance with the approved Environmental Monitoring Program (EMP); with the results of the deposited dust monitoring completed for the Reporting Period summarised in **Table 1**.

Monitoring results indicate that for the period from 28 December 2023 to 28 June 2024, the depositional dust levels recorded at the four Depositional Dust Gauge (DDG) monitoring locations were below the project criterion of 4 g/m²/month over an annual averaging period.

Table 1 *Deposited Dust Monitoring Results.*

Month	Start Date	End Date	DDG1	DDG2	DDG3	DDG4
January 2024	28/12/2023	25/01/2024	1.4	1.2	1.0	1.2
February 2024	25/01/2024	26/02/2024	1.1	0.8	1.3	1.3
March 2024	26/02/2024	28/03/2024	0.8	0.9	1.8	0.6
April 2024	28/03/2024	29/04/2024	0.9	0.4	0.5	0.8
May 2024	29/04/2024	29/05/2024	0.5	0.3	0.2	0.4
June 2024	29/05/2024	28/06/2024	0.7	0.5	0.5	0.7
Reporting Period Average			0.9	0.7	0.8	0.8
Annual Average Criteria			4.0	4.0	4.0	4.0

3.0 Blast Monitoring

HQPL conducts blasts in accordance with the Consent and the EPL to avoid harm and minimise nuisance to environment and the surrounding community. Blast monitoring results for the reporting period are summarised in **Table 2**.

During the Reporting Period, all blasts were below the project criterion limits of 115 dBL and 10 mm/s for air blast overpressure and ground vibration, respectively, as outlined by the Consent and EPL.

Table 2 *Blasting Monitoring Results*

Date	Time	Airblast Overpressure (dB(L))	Ground Vibration (mm/s)
12/01/2024	12:38	108.9	1.18
23/01/2024	9:03	108.9	0.81
02/02/2024	13:04	111.2	0.86
15/03/2024	12:55	107.4	0.87
26/03/2024	13:09	104.6	0.66
28/06/2024	10:37	114.6	1.24

*Not triggered = n/t
 Ground Vibration < 0.5 mm/s
 Overpressure < 108 dB(L)

4.0 Noise Monitoring

HQPL uses all practical mitigation measures to ensure that the operational noise generated by the Quarry does not exceed the criteria stipulated in the Consent and the EPL. Noise monitoring is undertaken in accordance with the Quarry’s EMP.

4.1 Attended Noise Monitoring

Attended noise monitoring was undertaken during May 2024, and the results are summarised in **Table 3**. The results detail all noise sources, including quarry operations, road traffic and/or animals (such as cattle, insects or birds). The attended noise monitoring results are assessed as compliant with the criteria of the Consent and the EPL.

Table 3 *Attended Noise Monitoring Results – May 2024*

Location	Start Date and Time	Wind		Stability Class	Standard limits apply? ¹	Limits, dB	Site levels, dB	Exceedances, dB ¹
		Speed m/s	Direction ³			L _{Aeq,15minute}	L _{Aeq,15minute} ²	L _{Aeq,15minute}
NM2	23/05/2024 08:13	0.7	232	A	Y	48	IA	Nil
NM1	23/05/2024 08:35	0.4	209	A	Y	48	IA	Nil

Notes: 1. Noise emission limits are applicable if weather conditions were within parameters specified in Section 2.5. NA in exceedance column indicates that limits were not applicable due to weather conditions.
 2. Site-only L_{Aeq,15minute}, includes modifying factor penalties if applicable.
 3. Degrees magnetic north, “-” indicates calm conditions.

4.2 Unattended Noise Monitoring

Unattended noise monitoring was undertaken during May 2024 at monitoring locations NM1 and NM2, the results are displayed in **Table 4**. The unattended noise monitoring results are assessed as compliant with the criteria of the Consent and the EPL.

Table 4 *Unattended Noise Monitoring Results – May 2024*

Location	Period	Measured noise levels, dB	
		RBL	L _{Aeq,period}
NM1 23 May-30 May 2024	Day	46	53
	Evening	45	55
	Night	45	52
NM2 23 May-30 May 2024	Day	57	65
	Evening	49	65
	Night	40	62

Notes: 1. Levels in this table are not necessarily the result of activity at site.

5.0 Water Monitoring

Water monitoring is undertaken in accordance with the Quarry’s Site Water Management Plan (SWMP). This includes biannual monitoring of surface water and daily monitoring of water during discharge events from the licenced discharge point (LDP).

5.1 Surface Water

Surface water monitoring is to be undertaken biannually and compared against baseline data to ensure that ecological health downstream of the discharge location is not compromised due to the Quarry operation.

During the reporting period, surface water monitoring was undertaken on 18 April 2024, with monitoring results summarised in **Table 5**.

Table 5 *Surface Water Monitoring Results – Sediment Dam 2.*

Date	Temp (°C)	pH	EC (µS/cm)	Turbidity (NTU)	TSS (mg/L)	Oil & Grease (mg/L)	Total N (mg/L)	Total P (mg/L)
18/04/2024	20.5	7.4	542	470	80	<5	0.5	0.20

5.2 Discharge Compliance

Water quality monitoring is undertaken daily during discharge to demonstrate compliance with parameters specified in the EPL. During the reporting period, there were no discharges from our LDP located at Sediment Dam 2, as summarised in **Table 6**.

Table 6 *Discharge Monitoring Results – Sediment Dam 2.*

Date	Temp (°C)	pH	EC (µS/cm)	Turbidity (NTU)	TSS (mg/L)	Oil & Grease (mg/L)
-	-	-	-	-	-	-

6.0 Production

Monthly monitoring of sales across the reporting period is summarised in **Table 7**. In total there were approximately 237,000 tonnes of product sold, with an associated 7,209 truck movements.

Table 7 *Monthly Production Data.*

Month	Truck Movements	Quarry Product (tonnes)
January 2024	1,537	50,963
February 2024	2,247	73,874
March 2024	1,419	46,529
April 2024	1,076	35,168
May 2024	419	13,584
June 2024	511	17,217
Total	7,209	237,335

7.0 Reporting

7.1 Environmental Incidents

During the reporting period, no reportable environmental incidents occurred at the Quarry.

7.2 Non-Compliances

During the reporting period, no reportable non-compliances were identified at the Quarry.

7.3 Community Complaints

During the reporting period, one community complaint was reported to the Quarry, as outlined below:

- On 28 February 2024, a resident on Tarean Road raised concerns regarding dust emissions from the Quarry. HQPL staff reviewed the previous six months of depositional dust data (i.e. September 2023 to February 2024), which confirmed that quarry was compliant with the performance criteria provided by the Consent. The complainant was advised in writing on 1 March 2024 the outcome of this review.

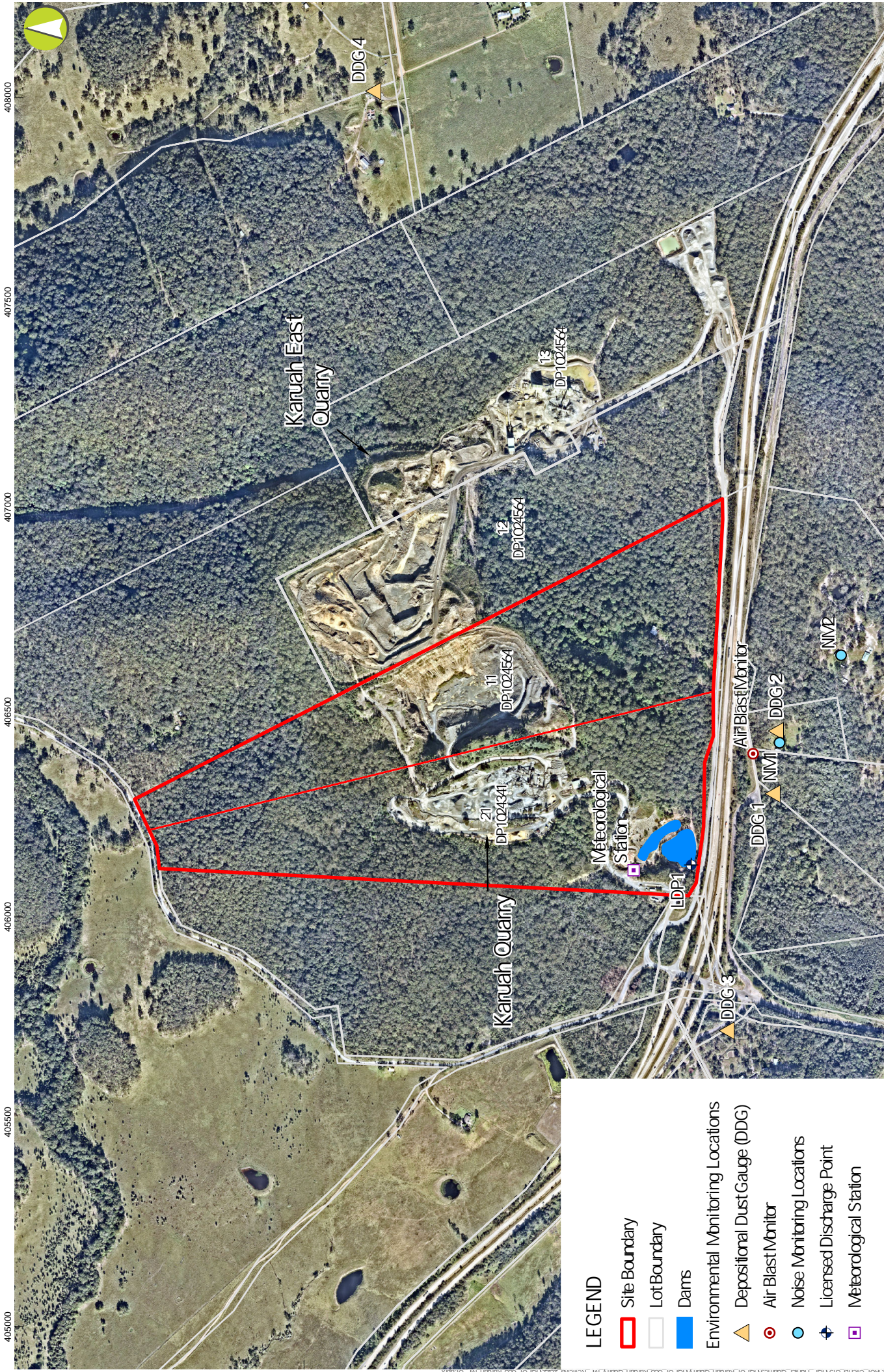
7.4 Management Plans

During the reporting period, no Management Plan updates were required.

7.5 Audits

During the reporting period, no compliance audits were undertaken.

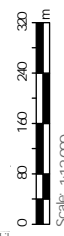
Appendix 1 – Environmental Monitoring Locations



GDA2020 MGA Zone 56
 8/03/2024

LEGEND

- ▭ Site Boundary
- Lot Boundary
- Dams
- Environmental Monitoring Locations**
- ▲ Depositional Dust Gauge (DDG)
- Air Blast Monitor
- Noise Monitoring Locations
- + Licensed Discharge Point
- Meteorological Station



I:\01 Clients GIS\HP_Hunter Quarries\HP01 Karuah Quarry\HP01_003 Karuah Quarry_MP_Review_2023\HP01_003 Karuah MP_01.aprx