



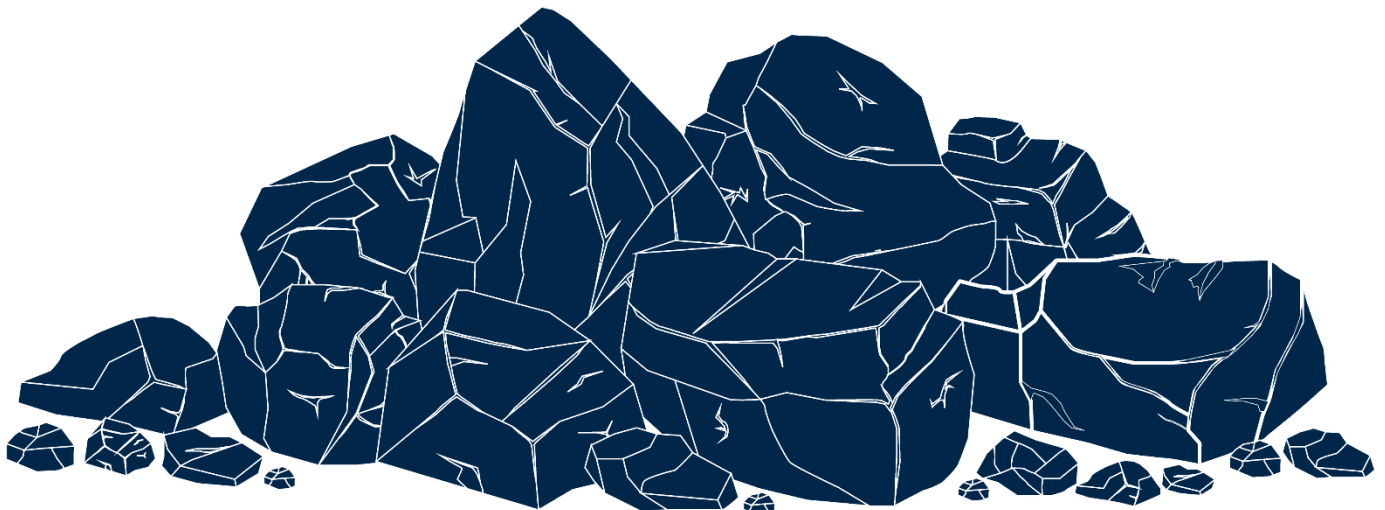
Karuah East Quarry  
ABN: 80 141 505 035  
Karuah East Quarry Pty Limited  
Blue Rock Close, Karuah NSW 2324

W: [www.hunterquarries.com.au](http://www.hunterquarries.com.au)  
E: [admin@hunterquarries.com.au](mailto:admin@hunterquarries.com.au)  
T: 02 4050 0304  
P: PO Box 23, Thornton NSW 2322

Karuah East Quarry

# Environmental Monitoring Report

June 2024



## Contents

<b>Contents .....</b>	<b>2</b>
<b>1.0 Introduction.....</b>	<b>3</b>
<b>2.0 Air Quality Monitoring.....</b>	<b>4</b>
2.1 Deposited Dust Monitoring.....	5
2.2 High Volume Air Sampling.....	5
<b>3.0 Blast Monitoring .....</b>	<b>7</b>
<b>4.0 Noise Monitoring .....</b>	<b>7</b>
<b>5.0 Surface Water Monitoring .....</b>	<b>8</b>
<b>6.0 Weather Station Monitoring .....</b>	<b>9</b>
<b>7.0 Production Data .....</b>	<b>10</b>
<b>8.0 Reporting.....</b>	<b>10</b>
8.1 Reportable Environmental Incidents .....	10
8.2 Reportable Non-Compliances .....	10
8.3 Community Complaints.....	10
<b>Appendix 1 – EPL 20611 Monitoring Locations.....</b>	<b>11</b>

## 1.0 Introduction

This report has been completed to meet the requirements of Section 66(6) of the *Protection of the Environment Operations Act 1997* and the NSW Environmental Protection Authority’s (EPA) Requirements for Publishing Pollution Monitoring Data (EPA, 2013). This report summarises the required monitoring data under Environmental Protection Licence 20611 (the EPL) and Project Approval MP09\_0175 (the Consent) for the Karuah East Quarry (the Quarry) as summarised by **Table 1** and **Table 2** respectively.

**Table 1** Summary of Environment Protection Licence, EPL 20611

<b>EPL Number:</b>	EPL 20611
<b>Licensee’s Name:</b>	Karuah East Quarry Pty Limited
<b>Licensee’s Address:</b>	Karuah East Quarry PO Box 3284, Thornton NSW 2322 Blue Rock Close, Karuah NSW 2324
<b>Link to Full Licence on the EPA website:</b>	<a href="#">EPL 20611</a>

**Table 2** Summary of Project Approval, MP09\_0175

<b>Project Approval:</b>	MP09_0175
<b>Applicant:</b>	Karuah East Quarry Pty Limited
<b>Consent Authority:</b>	NSW Planning Assessment Commission
<b>Link to Full Project Approval on the NSW Planning website:</b>	<a href="#">Project Approval MP09_0175</a>

A summary of the environmental monitoring data for the June 2024 reporting period (the Reporting Period) is covered in this report. Tables throughout this report provide key monitoring information from the EPL and the Consent, including:

- location of monitoring;
- pollutant;
- unit of measurement; and
- monitoring frequency required.

Monitoring locations are illustrated by the site plan provided by **Appendix 1**.

## 2.0 Air Quality Monitoring

Dust emissions generated by the Quarry operation must not cause additional exceedances of ambient air quality criterion outlined in Schedule 3, Condition 13 of the Consent and summarised by **Table 3**, **Table 4** and **Table 5**.

Deposited dust and TSP/PM10 monitoring is undertaken at the locations listed in **Table 6**, in accordance with the Approved Methods of Sampling and Analysis of Air Pollutants in NSW (EPA, 2022).

**Table 3 Long-term Assessment Criteria for Deposited Dust (MP09-0175).**

Pollutant	Averaging Period	Maximum Increase in Deposited Dust Level <sup>1</sup>	Maximum Total Deposited Dust Level <sup>1</sup>
Deposited Dust	Annual	2 g/m <sup>2</sup> /month	4 g/m <sup>2</sup> /month

<sup>1</sup> Deposited dust is assessed as insoluble solids as defined by AS 3580.10.1-2003.

**Table 4 Long-term Assessment Criteria for Particulate Matter (MP09-0175).**

Pollutant	Averaging Period	Criterion
Total Suspended Particulates	Annual	90 µg/m <sup>3</sup>
Particulate Matter < 10 µm (PM10)	Annual	30 µg/m <sup>3</sup>

**Table 5 Short-term Assessment Criteria for Particulate Matter (MP09-0175).**

Pollutant	Averaging Period	Criterion
Particulate Matter < 10 µm (PM10)	24-hour	50 µg/m <sup>3</sup>

**Table 6 Air Quality Monitoring Locations (EPL 20611).**

Site Monitoring Point ID	EPL Monitoring Point ID	Location	Address	Coordinates
DDG 1	4	South-West of Karuah East Quarry	54 Mill Hill Close, Karuah NSW 2324	32°38'04"S 151°59'58"E
DDG 2	5	South-West of Karuah East Quarry	64 Mill Hill Close, Karuah NSW 2324	32°38'02"S 152°00'09"E
DDG 3	6	South-West of Karuah East Quarry	Lot 251 DP1092111, Karuah NSW 2324	32°37'57"S 151°59'41"E
DDG 4	7	East of Karuah East Quarry	21 Halloran Road, North Arm Cove NSW 2324	32° 37' 30.87"S 152°01'10.18"E
DDG 5	8	South-West of Karuah East Quarry	Lot 21 DP1024341, Karuah NSW 2324	32° 37' 55.33"S 152°00'2.74"E
HVAS	9	South-West of Karuah East Quarry	64 Mill Hill Close, Karuah NSW 2324	32°38'03"S 152°00'09"E

## 2.1 Deposited Dust Monitoring

Deposited dust results for the 12-months prior-to and including June 2024 are summarised by **Table 7**.

**Table 7** *Deposited dust monitoring results.*

Reporting Period	Start Date	End Date	Days	DDG 1 EPL ID 4	DDG 2 EPL ID 5	DDG 3 EPL ID 6	DDG 4 EPL ID 7	DDG 5 EPL ID 8
Jul-23	04/07/2023	03/08/2023	30	0.4	0.9	1.2	1.1	0.3
Aug-23	03/08/2023	04/09/2023	32	0.7	0.3	0.5	0.5	0.2
Sep-23	04/09/2023	04/10/2023	30	1.5	2.6	1.4	1.4	2.0
Oct-23	04/10/2023	02/11/2023	31	1.4	2.4	2.2	1.6	2.5
Nov-23	02/11/2023	30/11/2023	28	1.6	–	1.4	1.0	2.0
Dec-23	30/11/2023	28/12/2023	28	1.1	1.0	1.3	1.3	1.7
Jan-24	28/12/2023	25/01/2024	28	1.4	1.2	1.0	1.2	1.7
Feb-24	25/01/2024	26/01/2024	32	1.1	0.8	1.3	1.3	1.3
Mar-24	26/02/2024	28/03/2024	31	0.8	0.9	1.8	0.6	1.8
Apr-24	28/03/2024	29/04/2024	32	0.9	0.4	0.5	0.8	0.5
May-24	29/04/2024	29/05/2024	30	0.5	0.3	0.2	0.4	0.4
Jun-24	29/05/2024	28/06/2024	30	0.7	0.5	0.5	0.7	0.4
<b>Progressive Annual Average</b>				<b>1.0</b>	<b>1.6</b>	<b>1.1</b>	<b>1.0</b>	<b>1.3</b>

Monitoring results for the Reporting Period at all five DDG monitoring sites are within the long-term annual deposited dust limit of 4 g/m<sup>2</sup>/month.

It should be noted that DDG 2 sample in the November 2023 reporting period become contaminated with vegetation matter and is therefore discounted from averaging. This ‘failure to monitor event’ was reported to the NSW Department of Planning, Housing & Infrastructure (NSW Planning), the NSW EPA and surrounding landholders in accordance with the relevant conditions of the Consent and EPL.

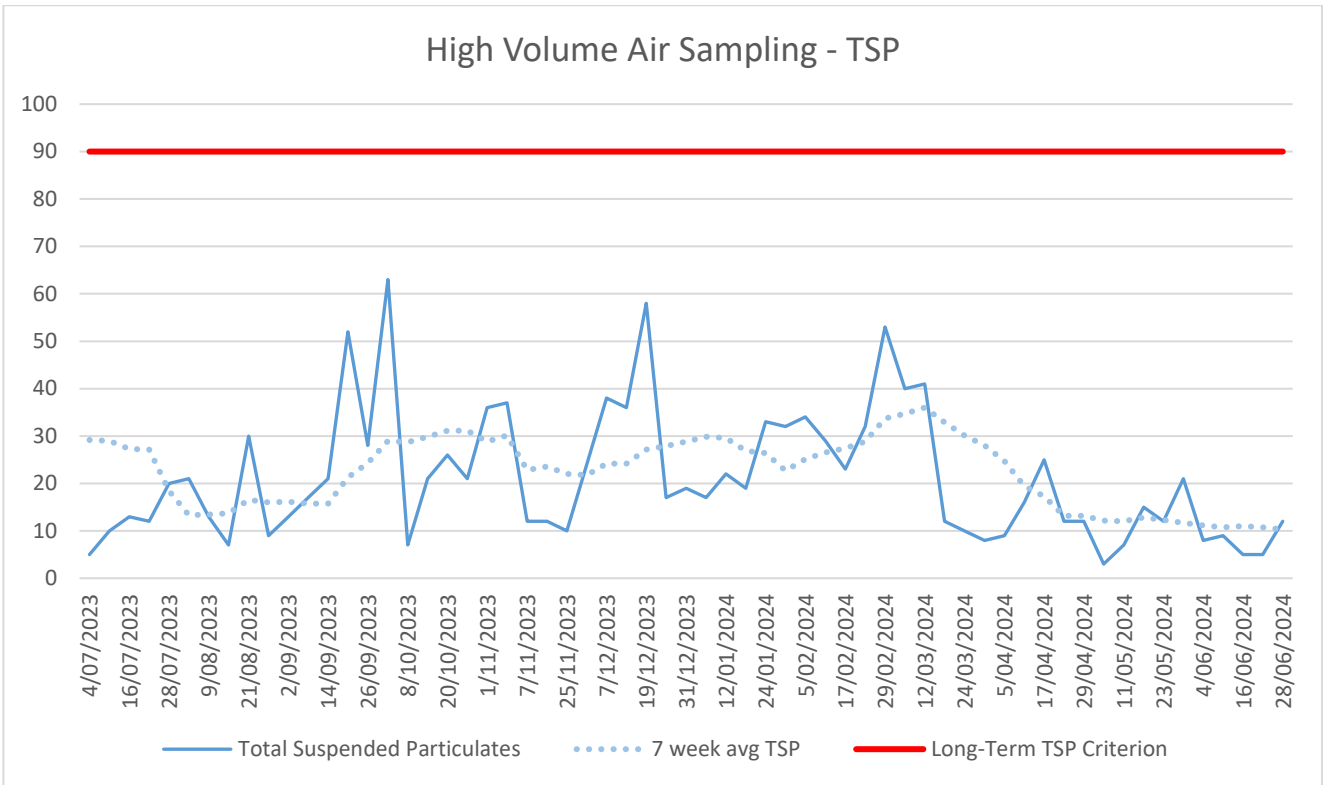
## 2.2 High Volume Air Sampling

TSP and PM10 results for the Reporting Period are summarised by **Table 8** and illustrated respectively by **Figure 1** and **Figure 2**.

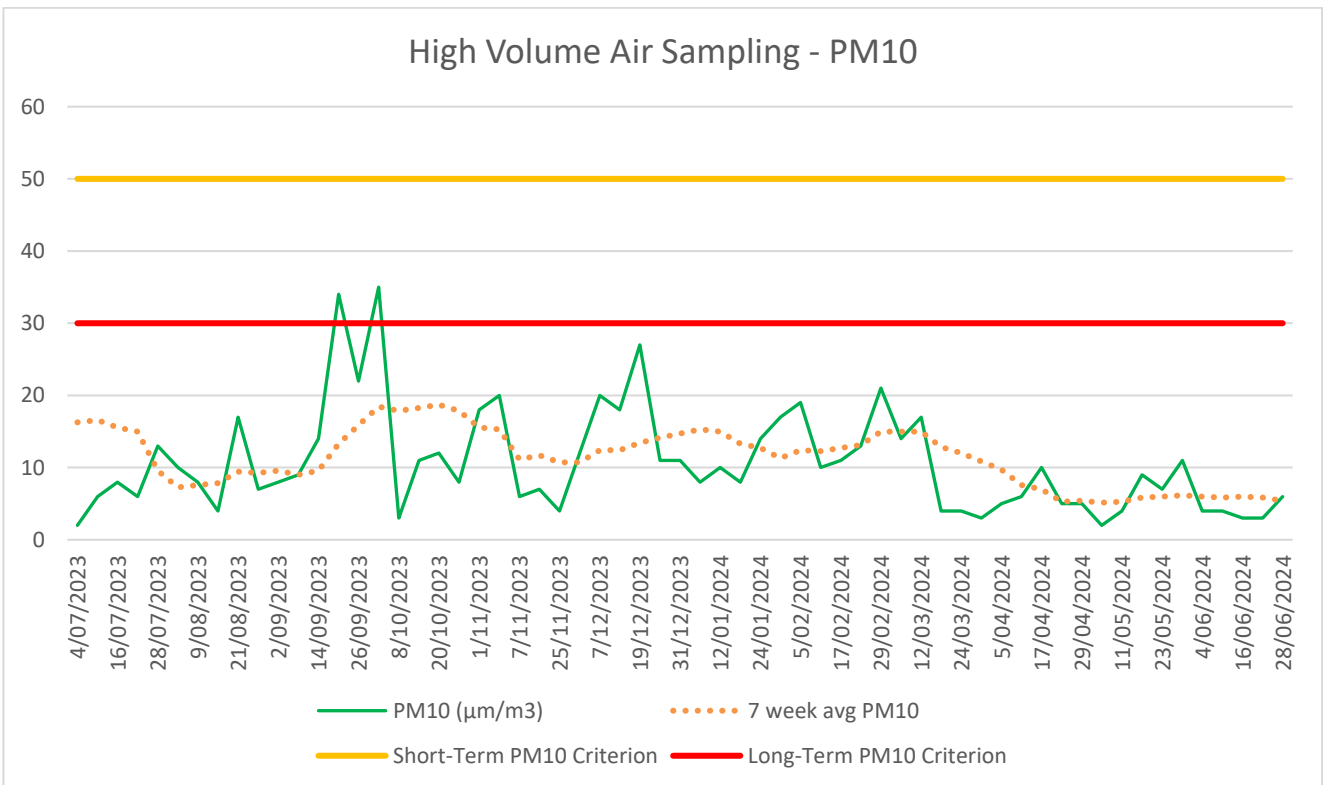
**Table 8** *HVAS TSP and PM10 monitoring results for the Reporting Period.*

Run Date	Total Suspended Particulates, TSP (µg/m <sup>3</sup> )	Particulate Matter < 10 µm, PM10 (µg/m <sup>3</sup> )
04/06/2024	8	4
10/06/2024	9	4
16/06/2024	5	3
22/06/2024	5	3
28/06/2024	12	6
<b>Monthly Average</b>	<b>7.8</b>	<b>4</b>

Monitoring results for the five HVAS run days within the Reporting Period were compliant with the long-term limits for TSP and PM10 and short-term limits for PM10.



**Figure 1** Long-term TSP monitoring trends.



**Figure 2** Long-term PM10 monitoring trends.

### 3.0 Blast Monitoring

Blast monitoring is undertaken for all blasts at the Quarry at the nearest residential location (EPL Monitoring Point 11) to ensure that air blast overpressure and ground vibration remain within the compliance limits, as summarised by **Table 9**; with the monitoring results summarised by **Table 10**.

There were two blasts within the Reporting Period and each was observed to be within compliance limits.

**Table 9 Blasting Airblast Overpressure and Ground Vibration Criteria (MP09-0175 & EPL 20611).**

Location	Airblast Overpressure (dB(L))	Ground Vibration (mm/s)	Allowable Exceedance
Private Residence B	120	10	0%
EPL Monitoring Point ID 11	115	5	5% over 12-month reporting period.

**Table 10 Blasting Monitoring Results.**

Date	Time	Location	Airblast Overpressure (dB(L))	Ground Vibration (mm/s)
06/06/2024	11:31	RL 99	108.3	0.84
19/06/2024	11:35	RL 135	108.9	1.06

\*Not triggered = n/t  
 Ground Vibration < 0.5 mm/s  
 Overpressure < 108 dB(L)

### 4.0 Noise Monitoring

Noise monitoring is undertaken in accordance with the EPL and NSW Planning approved Noise Management Plan, which requires attended noise monitoring to be conducted on a quarterly basis.

During the Reporting Period, no noise monitoring was completed.

## 5.0 Surface Water Monitoring

Water monitoring is undertaken in accordance with the EPL and NSW Planning approved Water Management Plan, with daily monitoring of surface water being discharged from the Quarry via the licenced discharge points in accordance with Condition L2 and M2 of the EPL.

Discharge events that occurred during the Reporting Period are summarised by **Table 11**.

**Table 11 Discharge Water Monitoring Results.**

Date	pH	Turbidity (NTU)	Total Suspended Solids, TSS (mg/L)	Oil and Grease	Discharge Type
<b>LDP 1 – Dam 1</b>					
02/06/2024	7.5	>1,000	420	NV	Uncontrolled
03/06/2024	7.3	>1,000	770	NV	Uncontrolled
04/06/2024	7.6	>1,000	350	NV	Uncontrolled
<b>LDP 2 – Dam 2</b>					
02/06/2024	6.9	140	44	NV	Uncontrolled
03/06/2024	6.8	110	42	NV	Uncontrolled
04/06/2024	7	65	28	NV	Controlled
06/06/2024	6.8	70	29	NV	Controlled
17/06/2024	7.1	18	6	NV	Controlled
18/06/2024	7.3	13	<5	NV	Controlled
26/06/2024	7.1	38	16	NV	Controlled
27/06/2024	7	38	14	NV	Controlled
<b>LDP 3 – Dam 3</b>					
02/06/2024	7.1	130	44	NV	Uncontrolled
03/06/2024	6.9	120	50	NV	Uncontrolled
04/06/2024	7	85	32	NV	Controlled
05/06/2024	7	60	21	NV	Controlled
06/06/2024	6.9	60	16	NV	Controlled
07/06/2024	7	80	18	NV	Controlled
17/06/2024	7.1	45	28	NV	Controlled
18/06/2024	7	40	23	NV	Controlled
19/06/2024	7.1	39	7	NV	Controlled
24/06/2024	7.1	60	16	NV	Controlled
25/06/2024	7.1	50	18	NV	Controlled
26/06/2024	7	40	18	NV	Controlled



## 6.0 Weather Station Monitoring

The Quarry operates and maintains a permanent meteorological monitoring station to record weather parameters including temperature, wind speed and direction, solar radiation, and rainfall. **Figure 3** below outlines the weather records for the Reporting Period.

**Monthly Weather Summary**

Site: **Karuah Quarry Complex**  
 Month: **June 2024**

Date	Day	Temperature @ 2m			Temperature @ 10m			Winds			Solar Radiation		Rain <sup>2</sup> mm
		Max <sup>1</sup> °C	Min <sup>2</sup> °C	Ave <sup>1</sup> °C	Max <sup>1</sup> °C	Min <sup>2</sup> °C	Ave <sup>1</sup> °C	Max Gust <sup>1</sup> km/h	Ave Speed <sup>1</sup> km/h	Dir Ave <sup>1</sup> deg	Max <sup>1</sup> W/m <sup>2</sup>	Ave <sup>1</sup> W/m <sup>2</sup>	
1	Sat	17.6	13.7	15.6	18.7	13.6	16	20.1	1.9	172.3	112.5	13.9	36.6
2	Sun	14.5	11.1	12.9	15.3	11.1	13	39	5.5	204.2	157.5	14.9	54.6
3	Mon	15	6.9	11.3	14.4	8.2	12	24.9	3.9	259.8	506.7	52.5	0.4
4	Tue	17	7	11.5	15.8	8	12.3	36.7	5.7	244	487.4	93.2	0
5	Wed	17.1	5.4	10	16.4	6.1	10.3	26	2.7	232.9	467.4	80.2	0
6	Thu	19.4	7	12.3	17.7	7.9	12.3	11.8	2	202.1	619.1	80.9	20.6
7	Fri	18.8	7.6	12.6	18	8.4	12.9	14.2	2.5	237.6	478.3	82.7	0.6
8	Sat	18	8.6	12.2	17.1	9.3	12.6	22.5	3.5	233.7	525.8	98.1	0
9	Sun	19	10.3	14.6	18.1	12.7	15.1	36.7	6.8	247.3	445.8	100.1	0
10	Mon	19.5	6.8	12.1	18.2	8.6	13	29.6	4.6	239.5	471.7	81.1	0
11	Tue	18.9	6.4	11.2	17.6	7.1	11.6	24.9	3.2	215.2	418.3	93.7	0
12	Wed	19.3	10.1	14.8	17.8	10.7	15.2	35.5	5.1	236.1	568.3	75.9	0
13	Thu	20.1	8.8	13.3	19.2	9.3	13.5	42.6	7.8	227.3	516.7	89.2	0.4
14	Fri	16.8	9.7	12.9	15.3	10.4	13	21.3	4	235.7	534.1	66.1	0
15	Sat	16.5	11	12.9	15.3	11	12.7	20.1	3.4	198.9	378.3	46.3	20
16	Sun	16.1	7.7	11.1	15.6	8.7	11.4	16.6	4	228.9	484.1	52.1	4.8
17	Mon	16.3	6.1	10.7	15.5	7.6	11.1	24.9	5.3	235.1	413.3	96.5	0
18	Tue	15.9	9.3	13	15.1	10.2	13.1	34.3	6	231.8	654.9	60.3	0.2
19	Wed	16.5	4	9.3	15.5	5.7	10.1	28.4	2.9	216.3	590	68.6	0
20	Thu	15.8	2.7	7.5	15.1	3.7	8	26	3.3	235.9	415	97.2	0
21	Fri	17.4	6	10	17.2	7	10.6	14.2	2	232.2	497.5	75.2	0
22	Sat	18.8	6.1	11	17.9	8.1	11.7	21.3	3.6	228.3	564.9	80	0.2
23	Sun	12.9	9.3	11.1	12.8	9.8	11.2	26	4.7	230.5	354.2	33.6	41.2
24	Mon	15.4	5.4	10.7	15.5	5.8	11.1	21.3	2.7	218.1	583.3	57.5	8.4
25	Tue	17.8	3.8	9.4	17.3	4.6	10.1	11.8	1.6	222.4	405.8	91.5	0
26	Wed	20	6.5	11.5	19.5	7.7	12.2	11.8	2.2	219.5	399.2	93.8	0
27	Thu	22.6	5.7	12.5	22.2	6.9	13.5	14.2	1.9	222.8	407.5	94	0
28	Fri	18.9	3.6	9.3	17.7	4.5	10	16.6	2.6	243.1	411.7	97.1	0.2
29	Sat	18.8	3.5	9.3	18	4.6	10.1	9.5	1.7	213.9	409.2	96.8	0
30	Sun	21.2	8	13.4	21.5	8.3	14.2	26	2.1	205.8	473.3	88.1	4.2
<b>Ave or Total</b>			<b>7.3</b>	<b>11.7</b>	<b>17.0</b>	<b>8.2</b>	<b>12.1</b>	<b>23.6</b>	<b>3.6</b>	<b>225.7</b>	<b>458.4</b>	<b>75.0</b>	<b>192.4</b>
<b>High</b>		<b>22.6</b>	<b>13.7</b>	<b>15.6</b>	<b>22.2</b>	<b>13.6</b>	<b>16.0</b>	<b>42.6</b>	<b>7.8</b>		<b>654.9</b>	<b>100.1</b>	<b>54.6</b>
<b>Low</b>		<b>12.9</b>	<b>2.7</b>	<b>7.5</b>	<b>12.8</b>	<b>3.7</b>	<b>8.0</b>	<b>9.5</b>	<b>1.6</b>		<b>112.5</b>	<b>13.9</b>	

Notes: 1. Values are for the 24 hour period from 9am to 9am next day.  
 2. Values are for the 24 hours to 9am.

**No. rain days >1mm: 8**

**Figure 3 Weather Records Summary during the Reporting Period.**

## 7.0 Production Data

Monthly monitoring of sales and truck movements are summarised by **Table 12**.

**Table 12** Quarry Production Data.

Month	Truck Movements	Quarry Product Sales (t)
Jan-24	3,559	109,693
Feb-24	2,649	82,999
Mar-24	3,003	92,042
Apr-24	2,988	91,145
May-24	3,113	97,554
Jun-24	3,058	91,148

## 8.0 Reporting

### 8.1 Reportable Environmental Incidents

During the Reporting Period, no reportable environmental incidents occurred at the Quarry.

### 8.2 Reportable Non-Compliances

During the Reporting Period, one reportable environmental incident occurred at the Quarry, including:

- Uncontrolled discharges of sediment-laden water to Yalimbah and Bulga Creeks from Sunday 02 June to Tuesday 04 June following the receipt of 91.6 mm of rainfall over approximately 36 hours. This rainfall event exceeded the 95<sup>th</sup> percentile 5x day rainfall depth of 90.6 mm; which the site's sediment dams are designed to withstand in accordance with Landcom's Blue Book.

During the event the PIRMP was enacted through reporting to Appropriate Regulatory Authorities (ARA's), the KEQPL executive and the local community. Formal incident reports were subsequently submitted to NSW Planning and the NSW EPA.

### 8.3 Community Complaints

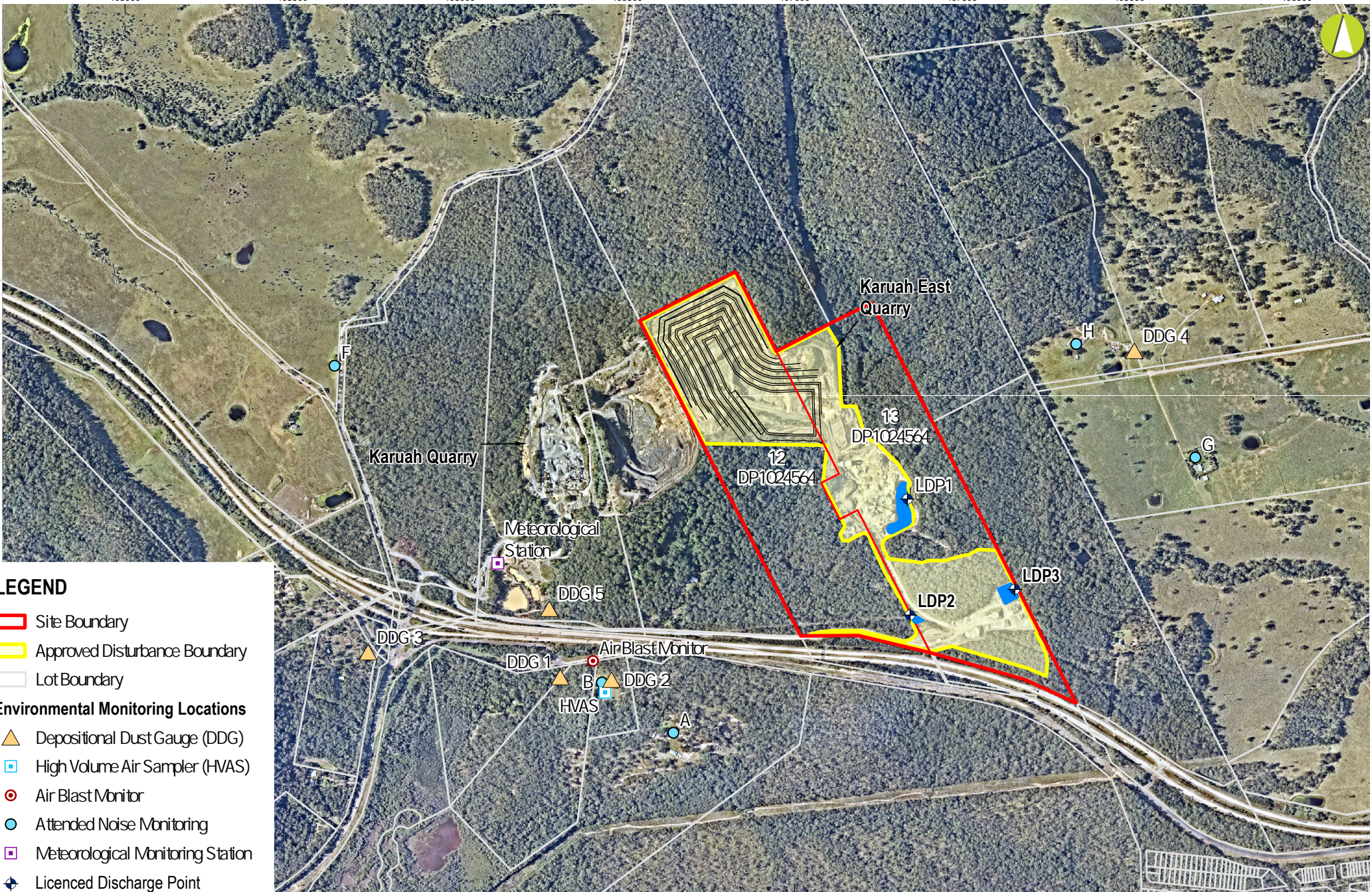
During the Reporting Period, no community complaints were received by the Quarry.

## Appendix 1 – EPL 20611 Monitoring Locations

405000 405500 406000 406500 407000 407500 408000 408500



6389500 6390000 6390500 6391000 6391500 6392000

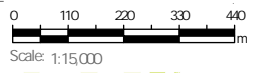


**LEGEND**

- Site Boundary
- Approved Disturbance Boundary
- Lot Boundary

**Environmental Monitoring Locations**

- Depositional Dust Gauge (DDG)
- High Volume Air Sampler (HVAS)
- Air Blast Monitor
- Attended Noise Monitoring
- Meteorological Monitoring Station
- Licenced Discharge Point



GDA 1994 MGA Zone 56  
8/03/2024

**Karuah East Quarry**

**Environmental Monitoring Report**

**APPENDIX 1 - Environmental Monitoring Locations**

I:\01\_Clients\GIS\HOP\_Hunter\_Cummins\HOP2\_Karuah\_East\MP\HOP2\_C00\_Karuah\_East\MP\_01.aprx