



# **Karuah East Quarry**

## **Monthly Environmental Monitoring Report**

**September 2016**

## Table of Contents

<b>1. INTRODUCTION .....</b>	<b>1</b>
<b>2. DUST MONITORING.....</b>	<b>1</b>
<b>2.1 Dust Deposition Results .....</b>	<b>2</b>
<b>2.2 High Volume Air Sampling Results .....</b>	<b>3</b>
<b>3. BLAST MONITORING RESULTS .....</b>	<b>3</b>
<b>4. NOISE MONITORING .....</b>	<b>4</b>
<b>4.1 Operator Attended Monitoring Results .....</b>	<b>5</b>
<b>4.2 Unattended Continuous Monitoring Results .....</b>	<b>6</b>
<b>4.3 Noise Result Summary .....</b>	<b>6</b>
<b>5. SURFACE WATER MONITORING .....</b>	<b>6</b>
<b>5.1 Discharge Monitoring Results .....</b>	<b>6</b>
<b>5.2 Monthly Monitoring Results .....</b>	<b>7</b>
<b>6. GROUNDWATER MONITORING .....</b>	<b>7</b>
<b>6.1 Groundwater Levels .....</b>	<b>7</b>
<b>6.2 Groundwater Quality .....</b>	<b>7</b>

## TABLES

Table 1	Licence Information .....	1
Table 2	PA 09_0175 Long term impact assessment criteria for particulate matter .....	1
Table 3	PA 09_0175 Short term impact assessment criteria for particulate matter .....	1
Table 4	PA 09_0175 Long term impact assessment criteria for Deposited Dust .....	1
Table 5	Air Quality Monitoring Locations for Karuah East Quarry .....	2
Table 6	Insoluble Solids (g/m <sup>2</sup> /month) for the Year to Date .....	2
Table 7	High Volume Air Sampling (µg/m <sup>3</sup> ) results .....	3
Table 8	Blasting criteria .....	4
Table 9	Blast Monitoring Results .....	4
Table 10	Operational Noise Criteria (dB(A) LA <sub>eq(15min)</sub> ) .....	4
Table 11	Noise Monitoring Program .....	4
Table 12	Operator Attended Noise Survey Results .....	5
Table 13	Unattended Continuous Noise Monitoring Results .....	6
Table 14	Surface Water Discharge Monitoring Criteria.....	6
Table 15	Surface Water Discharge Monitoring Results .....	7
Table 16	Groundwater Monitoring Program .....	7
Table 17	Groundwater Levels .....	7

## 1. INTRODUCTION

This report has been completed to meet the requirements of Section 66(6) of the *Protection of the Environment Operations Act 1997* and the NSW Environmental Protection Authority's (EPA) Requirements for Publishing Pollution Monitoring Data (October 2013). This report summarises the required monitoring data under Environmental Protection Licence (EPL) 20611 for the Karuah East Quarry. This report also includes some monitoring requirements under Project Approval 09\_0175.

A summary of the environmental data for September 2016 is covered in this report.

A summary of the licence information is provided in **Table 1** below.

**Table 1 Licence Information**

<b>Environmental Protection Licence Number</b>	20611
<b>Licensee's Name</b>	Karuah East Quarry Pty Ltd
<b>Licensee's Address</b>	Postal Address: PO Box 3284 Thornton NSW 2322  Quarry Location: Lot 13 DP1024564 Pacific Highway Karuah NSW 2324
<b>Link to full Licence on the EPA Website</b>	<a href="#">EPL 20611</a>

## 2. DUST MONITORING

There are no specific dust criteria listed in the EPL, but the dust criteria (Tables 2-4) are listed in Schedule 3 Condition 13 of Project Approval 09\_0175.

**Table 2 PA 09\_0175 Long term impact assessment criteria for particulate matter**

Pollutant	Averaging period	<sup>4</sup> Criterion
Total suspended particulates (TSP)	Annual	<sup>1</sup> 90 µg/m <sup>3</sup>
Particulate matter < 10 µm (PM10)	Annual	<sup>1</sup> 30 µg/m <sup>3</sup>

**Table 3 PA 09\_0175 Short term impact assessment criteria for particulate matter**

Pollutant	Averaging period	<sup>4</sup> Criterion
Particulate matter < 10 µm (PM10)	Daily	<sup>1</sup> 50 µg/m <sup>3</sup>

**Table 4 PA 09\_0175 Long term impact assessment criteria for Deposited Dust**

Pollutant	Averaging period	Maximum increase in deposited dust level	Maximum total deposited dust level
<sup>3</sup> Deposited dust	Annual	<sup>2</sup> 2 g/m <sup>2</sup> /month	<sup>1</sup> 4 g/m <sup>2</sup> /month

**Notes to Tables 2-4:**

<sup>1</sup> Total impact (ie incremental increase in concentrations due to the project plus background concentrations due

to all other sources).

<sup>2</sup> Incremental impact (ie incremental increase in concentrations due to the project on its own).

<sup>3</sup> **Deposited dust** is to be assessed as insoluble solids as defined by Standards Australia, AS/NZS 3580.10.1:2003: Methods for Sampling and Analysis of Ambient Air – Determination of Particulate Matter – Deposited Matter – Gravimetric Method.

<sup>4</sup> Excludes extraordinary events such as bushfires, prescribed burning, dust storms, sea fog, fire, incidents, illegal activities or any other activity agreed by the Secretary in consultation with EPA.

Dust deposition and TSP/PM<sub>10</sub> monitoring is undertaken at Karuah East Quarry at the locations listed in **Table 5**.

**Table 5 Air Quality Monitoring Locations for Karuah East Quarry**

Site ID	Location	Address	GPS Coordinates
DDG 1	South-East of Karuah East Quarry	5760 Pacific Hwy, Karuah NSW 2324	32°38'04"S 151°59'58"E
DDG 2	South-East of Karuah East Quarry	5770 Pacific Hwy, Karuah NSW 2324	32°38'02"S 152°00'09"E
DDG 3	East of Karuah East Quarry	DP 1024341, Karuah	32°37'57"S 151°59'41"E
DDG 4	West of Karuah East Quarry	21 Halloran Rd, North Arm Cove NSW 2324	32° 37' 30.87"S 152°01'10.18"E
DDG 5	West of Karuah East Quarry	Lot 21/DP 1024341 Karuah NSW 2324	32° 37' 55.33"S 152°00'2.74"E
HVAS (TSP/PM10)	South-East of Karuah East Quarry	5770 Pacific Hwy, Karuah NSW 2324	32°38'03"S 152°00'09"E

## 2.1 Dust Deposition Results

Dust deposition monitoring has been undertaken. Dust monitoring commenced at site DDG5 on 31 August 2016. Dust deposition results for this month and the year to date are shown in **Table 6**.

**Table 6 Insoluble Solids (g/m<sup>2</sup>/month) for the Year to Date**

Date	DDG 1	DDG 2	DDG 3	DDG 4	DDG 5
8/1/2016 to 8/2/2016	1.4	0.9	1.1	1.2	-
8/2/2016 to 3/3/2016	4.0	0.7	0.6	0.9	-
3/3/2016 to 4/4/2016	3.1	0.3	1.0	2.0	-
4/4/2016 to 6/5/2016	1.5	1.1	0.4	3.2	-
6/5/2016 to 3/6/2016	1.0	0.9	0.7	0.4	-
3/6/2016 to 4/7/2016	0.4	1.6	0.5	0.3	-
4/7/2016 to 1/8/2016	1.4	0.7	0.3	0.5	-
1/8/2016 to 31/8/2016	2.7	3.0	0.8	0.7	-
31/8/2016 to 28/9/2016	<b>2.1</b>	<b>1.6</b>	<b>0.8</b>	<b>0.8</b>	<b>0.9</b>
Rolling Annual Average	2.0	1.2	0.7	1.1	0.9

Monitoring results indicate that the insoluble solid levels recorded at DDG1 to DDG5 monitoring locations were at or below the project criterion of 4 g/m<sup>2</sup>/month.

## 2.2 High Volume Air Sampling Results

The monthly results for TSP and PM10 are shown in **Table 7**.

**Table 7 High Volume Air Sampling ( $\mu\text{g}/\text{m}^3$ ) results**

Date	HVAS TSP ( $\mu\text{g}/\text{m}^3$ )	HVAS PM10 ( $\mu\text{g}/\text{m}^3$ )
29/04/2016	23	18
05/05/2016	20	18
11/05/2016	17	8
17/05/2016	25	19
23/05/2016	35	20
29/05/2016	11	5
04/06/2016	9	8
10/06/2016	11	4
16/06/2016	10	8
22/06/2016	11	4
28/06/2016	11	6
04/07/2016	20	5
10/07/2016	10	6
16/07/2016	10	8
22/07/2016	14	7
28/07/2016	9	5
03/08/2016	27	14
09/08/2016	11	6
15/08/2016	18	12
21/08/2016	10	5
27/08/2016	9	4
02/09/2016	11	7
08/09/2016	15	8
14/09/2016	11	6
20/09/2016	16	9
26/09/2016	<i>Breakdown</i>	<i>Breakdown</i>
<sup>1</sup> 24hr Max Criteria	<b>N/A</b>	<b>50</b>
Report Average	13.3	7.5
Year-to-date Average	15.0	8.8
<sup>1</sup> Annual Average Criteria	<b>90</b>	<b>30</b>

**Note <sup>1</sup>:** Maximum criteria as specified in PA 09\_0175

Monitoring results indicate that the TSP and PM10 levels recorded were below the project criterion. Both the TSP and PM10 HVAS were unserviceable on 26 September 2016 as a result of power failure on the 25 September.

## 3. BLAST MONITORING RESULTS

The conditions stipulated for blasting is referred to in Condition L5 and M7 of EPL 20611 and Schedule 3, Condition 8 of PA 09\_0175. Blast monitoring is undertaken at every blast. **Table 8** summarises the blast monitoring criteria.

**Table 8 Blasting criteria**

Location	Airblast overpressure (dB(Lin Peak))	Ground vibration (mm/s)	Allowable exceedance
Any residence on privately-owned land, or any public infrastructure	120	10	0%
	115	5	5% of the total number of blasts over a period of 12 months

Summary of the blasting results is shown in **Table 9**. As of 30 September 2016, blasting has not occurred at Karuah East Quarry.

**Table 9 Blast Monitoring Results**

Date and time	Overpressure and vibration
<i>No blasting conducted during September 2016</i>	

## 4. NOISE MONITORING

Schedule 3 Condition 3 of the Project Approval and Condition L4.1 of the EPL requires Karuah East Quarry to ensure noise generated by the development does not exceed criteria outlined in **Table 10**.

**Table 10 Operational Noise Criteria (dB(A) LA<sub>eq(15min)</sub>)**

Location	Criteria ( <sup>1</sup> day)
Residence on Lot 11 DP 10244564	43
A	40
B	37
G	38
All other residence	35

**Note <sup>1</sup>:** A day is defined as the period from 7am to 6pm Monday to Saturday and 8am to 6pm Sunday and Public Holidays.

In accordance with Schedule 3 Condition 5 and Condition 7 of the Project Approval and the [Noise Management Plan \(SLR, 2015\)](#) a noise monitoring program has been implemented. Summary of this monitoring program is outlined in **Table 11**.

**Table 11 Noise Monitoring Program**

Construction Noise Monitoring			
Monitoring Method	<sup>1</sup> Location	Frequency	<sup>2</sup> Criteria (dB(A) LA <sub>eq(15min)</sub> )
Attended noise monitoring	F	At the commencement of new activities and a min of once per quarter.	54

Attended noise monitoring	G	At the commencement of new activities and a min of once per quarter.	44
<b>Operational Noise Monitoring</b>			
<b>Monitoring Method</b>	<b><sup>1</sup>Location</b>	<b>Frequency</b>	<b><sup>2</sup>Criteria</b>
Attended noise monitoring	F, G	Quarterly	As per Table 10, 12 and 13 <a href="#">Noise MP (SLR, 2015)</a>
Unattended noise monitoring	G	Quarterly	As per Table 10, 12 and 13 <a href="#">Noise MP (SLR, 2015)</a>

**Note:** 1. Appendix 1 illustrates the monitoring locations.  
2. Criteria is for daytime limits. Daytime is defined as the period from 7am to 6pm Monday to Saturday and 8am to 6pm Sunday and Public Holidays.

#### 4.1 Operator Attended Monitoring Results

The results of the operator attended noise surveys are presented in **Table 12**. Ambient noise levels given in the tables include all noise sources such as traffic, insects, birds, adjacent quarry and Karuah East Quarry. The table provides the following information:

- Monitoring location and serial number of the noise logger;
- Date, start time, Wind velocity (m/s) and Temperature (°C) at the measurement location; and
- Typical maximum (LA<sub>max</sub>) and contributed noise levels.

Quarry contributions listed in the tables are from Karuah East Quarry and are stated only when a contribution could be quantified.

**Table 12 Operator Attended Noise Survey Results**

Location	Date/Start Time/ Weather	Primary Noise Descriptor (dBA re 20 µPa)					Description of Noise Emissions and Typical Maximum Noise Levels (dBA)
		LA <sub>max</sub>	LA <sub>1</sub>	LA <sub>10</sub>	LA <sub>90</sub>	LA <sub>eq</sub>	
F Lot 50 DP 103	06/09/2016 9:05 am W = 1m/s NW Temp = 13°C	74	55	50	43	49	Local road traffic 74 dBA Pacific Highway 45 to 55 dBA Frogs/Insects 35 to 37 dBA Birds 50 to 54 dBA Aircraft 49 to 56 dBA Karuah East Project not audible
G Lot 3 DP 1032636	06/09/2016 9:30 am W = 1m/s N Temp = 16°C	60	51	44	33	40	Pacific Highway 32 to 38 dBA Frogs/Insects 30 to 36 dBA Birds 47 to 60 dBA Aircraft 52 dBA Karuah East Project not audible

## 4.2 Unattended Continuous Monitoring Results

**Table 13 Unattended Continuous Noise Monitoring Results**

INP Period	Units	LA1	LA10	LA90	LAeq
<b>Location G</b>					
Daytime during Operational Hours <sup>1</sup>	dBA	<i><u>Unattended noise monitoring was not conducted during September 2016</u></i>			
Daytime outside Operational Hours <sup>2</sup>	dBA				
Evening <sup>3</sup>	dBA				
Night <sup>4</sup>	dBA				

- Note:**
1. Daytime - 7.00 am to 5.00 pm Monday to Friday, 8.00 am to 12.00 pm Saturday, not operational on Sunday.
  2. Daytime - 5.00 pm to 6.00 pm Monday to Friday, 12.00 pm to 6.00 pm Saturday, 8.00 am to 6.00 pm Sunday.
  3. Evening - 6.00 pm to 10.00 pm.
  4. Night - 10.00 pm to 7.00 am Monday to Saturday, 10.00 pm to 8.00 am Sunday.

## 4.3 Noise Result Summary

Operator-attended noise monitoring was conducted on the 6 September 2016 to coincide with the beginning of site works. Unattended monitoring was not required. Noise contribution from the Karuah East Quarry project was not audible above the background noise during the attended noise survey.

## 5. SURFACE WATER MONITORING

Condition M2 of the EPL outlines the requirement to monitor surface water discharges from Karuah East Quarry via the three licensed discharge points (LDP001, LDP002, LDP003). The *EA Statement of Commitments* (Appendix 6, PA 09\_0175) requires additional surface water monitoring to be undertaken for the first twelve months of operations. This additional water monitoring requires monthly sampling to be undertaken at the three licensed discharge points and at four locations on Yalimbah and Bulga Creeks when in flow.

### 5.1 Discharge Monitoring Results

**Table 14** summarises the discharge criteria as per EPL.

**Table 14 Surface Water Discharge Monitoring Criteria**

Sampling Points	Pollutant	Unit	EPL Limit
LDP001 (Dam 1)	pH	pH units	6.5 – 8.5
LDP002 (Dam 2)	TSS	mg/L	40
LDP003 (Dam 3)	Oil & Grease	mg/L	5 and/or none visible
	Turbidity	NTU	-



**Table 15 Surface Water Discharge Monitoring Results**

Sampling Point	Date	Time	pH (pH units)	TSS (mg/L)	Oil & Grease (mg/L)	Turbidity (NTU)
LDP001 (Dam 1)	<i>No discharge during September 2016</i>					
LDP002 (Dam 2)						
LDP002 (Dam 3)						

## 5.2 Monthly Monitoring Results

Sampling was not conducted during September 2016. Dams were under construction and no flow had been observed in Bulga and Yalimbah Creeks since July 2016.

## 6. GROUNDWATER MONITORING

Groundwater monitoring is undertaken to meet the *EA Statement of Commitments* (Appendix 6, PA 09\_0175) and Section 8.2 [Water Management Plan \(SLR, 2015\)](#). Groundwater levels are monitored quarterly and water quality biannually at four groundwater monitoring bores (piezometers). Details of this monitoring program is shown in **Table 16**. Refer to Appendix 1 for piezometer locations.

**Table 16 Groundwater Monitoring Program**

Piezometer	Location	Water Level monitoring frequency	Water Quality monitoring frequency
BH205	Lot 13/DP1024564	Quarterly	Biannually
BH207	Lot 13/DP1024564	Quarterly	Biannually
BH208	Lot 21/DP1024341	Quarterly	Biannually
BH303	Lot 21/DP1024341	Quarterly	Biannually

### 6.1 Groundwater Levels

**Table 17 Groundwater Levels**

Date	Unit	BH207	BH205	BH208	BH303
30/03/2016	<sup>1</sup> metres	12.38	22.83	19.54	29.93

**Note <sup>1</sup>:** Groundwater levels are measured in metres below ground level.

### 6.2 Groundwater Quality

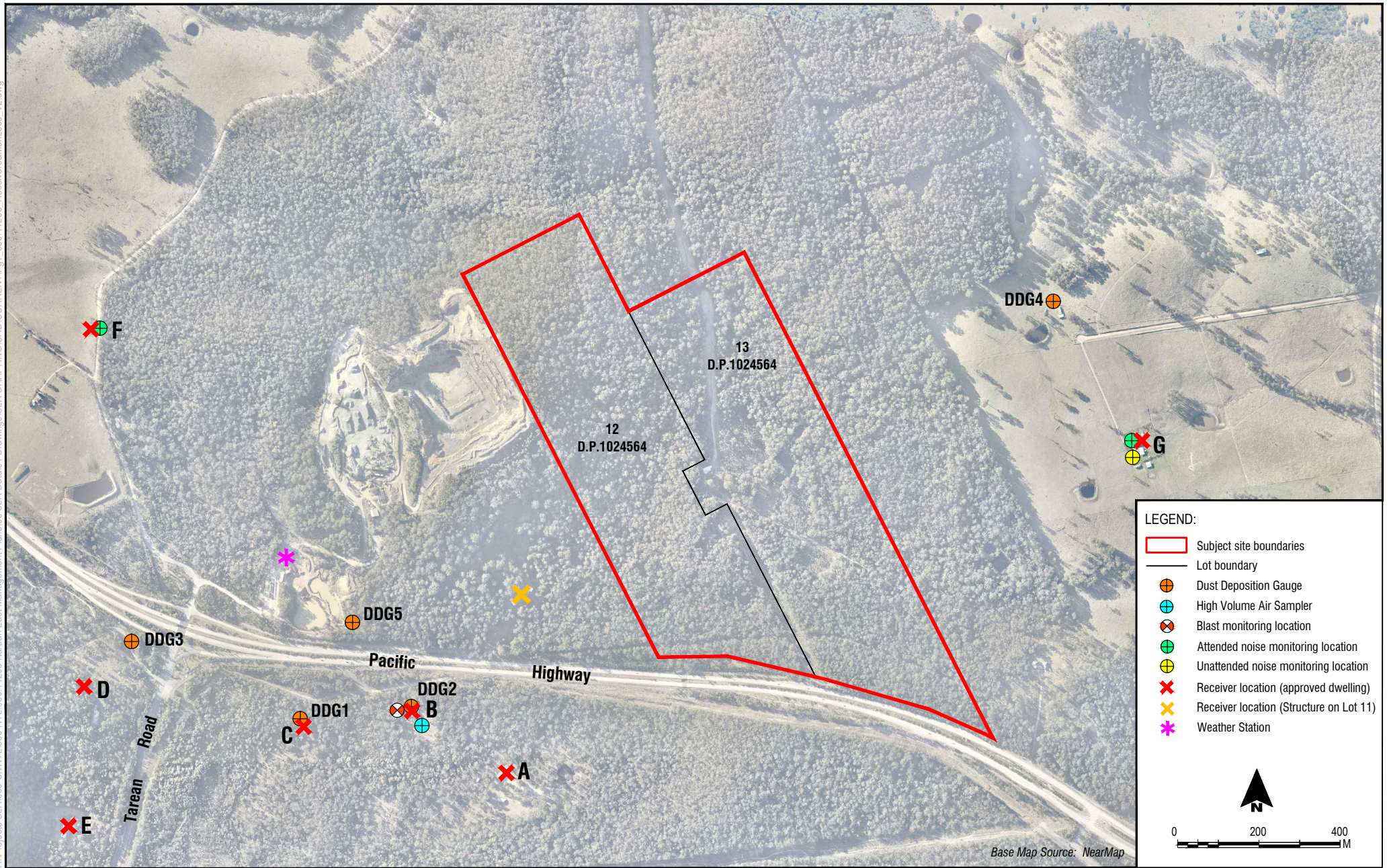
Groundwater was not sampled during September 2016.

# **APPENDIX 1**

## **Monitoring Locations**

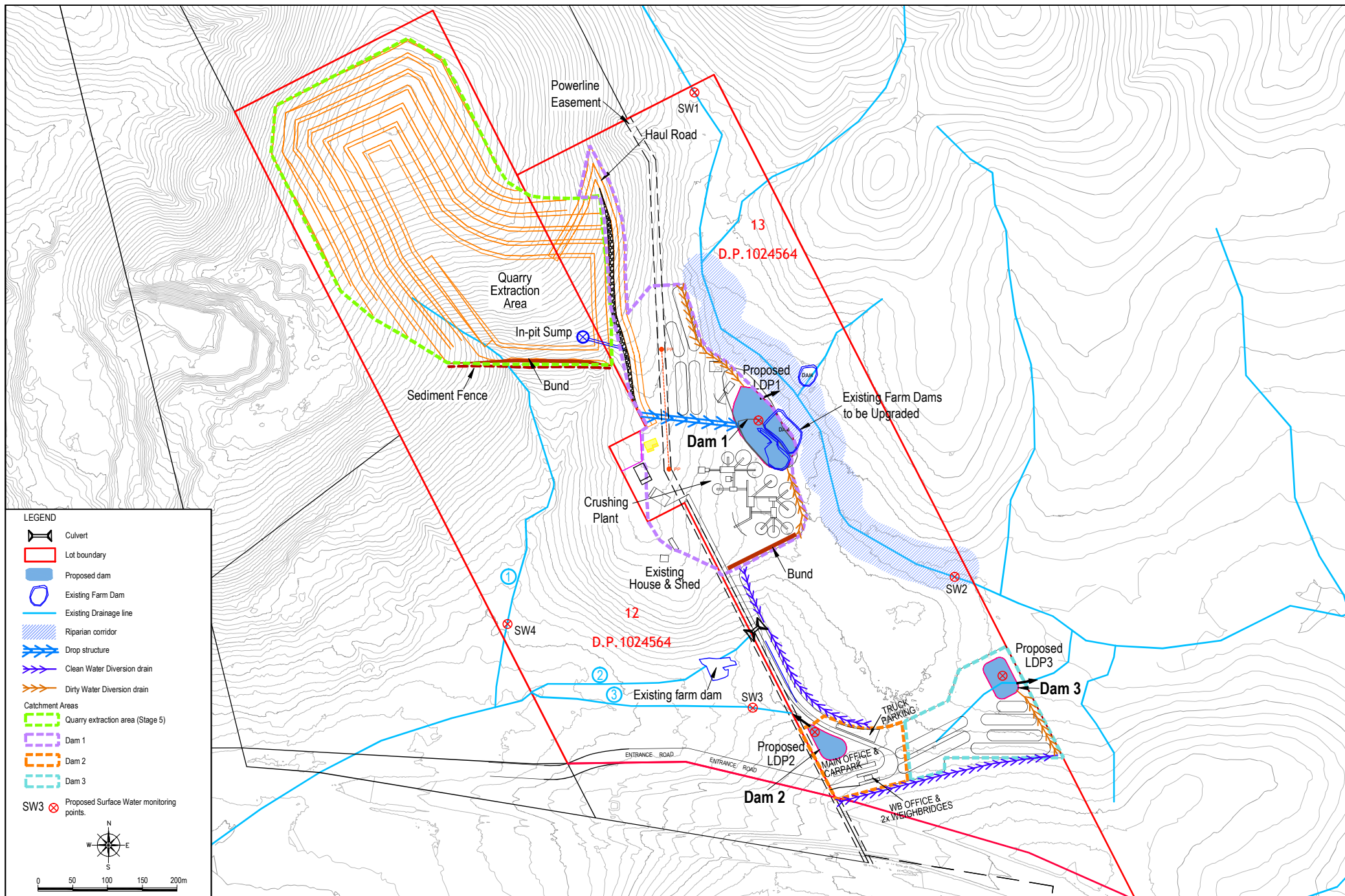


H:\Projects\SLR\630-SvNTL\630-NTL\630-11235 Karuah East Management Plans\06 SLR Data\01 Drawings\SLR DRAFTING\CAD\CURRENT\Fig1\_630\_11235 Receivers&MonLocs\_V2.dwg



To be printed A4

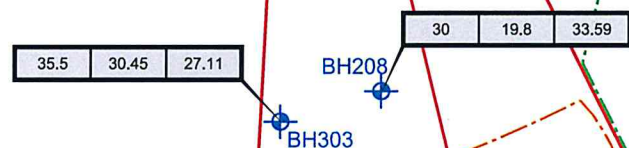




V:\633.10196\Figures\CAD\Current\Fg3\_HQP05-008\_SWPlan\_130710\_MS.dwg  
To be printed A3

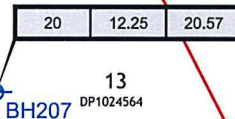
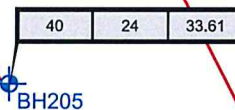
Proposed Surface Water Management Plan

FIGURE 4



5  
DP838128

4  
DP828128



201  
DP1042537

21  
DP1024341

11  
DP1024564

12  
DP1024564

14  
DP1024564

13  
DP1024564

16  
DP1024564

17  
DP1024564

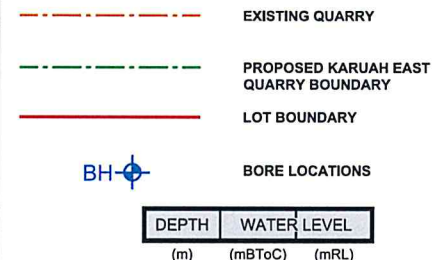
18  
DP1024564

19  
DP1024564

27  
DP1024341

PACIFIC HIGHWAY

#### LEGEND



drawn	LZ
approved	MB
date	18.08.11
scale	1:12,000
original size	A4

**coffey**  
**geotechnics**  
SPECIALISTS MANAGING  
THE EARTH

client:	KARUAH EAST QUARRY PTY LTD	
project:	PROPOSED KARUAH EAST HARD ROCK QUARRY GROUNDWATER STUDY	
title:	GROUNDWATER BORE LOCATIONS AND MONITORING DATA	
project no:	GEOTWARA21232AA-AG	figure no: FIGURE 3.1