



# **Karuah East Quarry**

## **Monthly Environmental Monitoring Report**

**December 2019**

## Table of Contents

<b>1. INTRODUCTION .....</b>	<b>1</b>
<b>2. DUST MONITORING.....</b>	<b>1</b>
<b>2.1 Dust Deposition Results .....</b>	<b>2</b>
<b>2.2 High Volume Air Sampling Results.....</b>	<b>3</b>
<b>2.3 Dust Monitoring Results Summary .....</b>	<b>5</b>
<b>3. BLAST MONITORING RESULTS .....</b>	<b>5</b>
<b>4. NOISE MONITORING .....</b>	<b>5</b>
<b>4.1 Operator Attended Monitoring Results .....</b>	<b>6</b>
<b>4.2 Unattended Continuous Monitoring Results .....</b>	<b>7</b>
<b>4.3 Noise Monitoring Summary .....</b>	<b>7</b>
<b>5. SURFACE WATER MONITORING .....</b>	<b>7</b>
<b>5.1 Discharge Monitoring Results .....</b>	<b>8</b>
<b>5.2 Monthly Monitoring Results .....</b>	<b>8</b>
<b>5.3 Surface Water Results Summary .....</b>	<b>9</b>
<b>6. GROUNDWATER MONITORING .....</b>	<b>9</b>
<b>6.1 Groundwater Levels .....</b>	<b>10</b>

## TABLES

Table 1	Licence Information .....	1
Table 2	PA 09_0175 Long term impact assessment criteria for particulate matter .....	1
Table 3	PA 09_0175 Short term impact assessment criteria for particulate matter .....	1
Table 4	PA 09_0175 Long term impact assessment criteria for Deposited Dust .....	1
Table 5	Air Quality Monitoring Locations for Karuah East Quarry .....	2
Table 6	Insoluble Solids (g/m <sup>2</sup> /month) for the Year to Date .....	2
Table 7	High Volume Air Sampling (µg/m <sup>3</sup> ) results .....	3
Table 8	Blasting criteria .....	5
Table 9	Blast Monitoring Results .....	5
Table 10	Operational Noise Criteria (dB(A) LA <sub>eq(15min)</sub> ) .....	5
Table 11	Noise Monitoring Program .....	6
Table 12	Operator Attended Noise Survey Results .....	7
Table 13	Unattended Continuous Noise Monitoring Results .....	7
Table 12	Surface Water Discharge Monitoring Criteria.....	8
Table 15	Surface Water Monthly Monitoring Results – Sediment Dams.....	8
Table 16	Surface Water Monthly Monitoring Results – Drain lines .....	9
Table 17	Groundwater Monitoring Program .....	9
Table 18	Groundwater Levels .....	10

## FIGURES

Figure 1	High Volume Air Sampling – Long term results .....	4
----------	--	---

## 1. INTRODUCTION

This report has been completed to meet the requirements of Section 66(6) of the *Protection of the Environment Operations Act 1997* and the NSW Environmental Protection Authority's (EPA) Requirements for Publishing Pollution Monitoring Data (October 2013). This report summarises the required monitoring data under Environmental Protection Licence (EPL) 20611 for the Karuah East Quarry. This report also includes some monitoring requirements under Project Approval 09\_0175 and the approved Statement of Commitments (SoC).

A summary of the environmental data for December 2019 is covered in this report.

A summary of the licence information is provided in **Table 1** below.

**Table 1 Licence Information**

<b>Environmental Protection Licence Number</b>	20611
<b>Licensee's Name</b>	Karuah East Quarry Pty Ltd
<b>Licensee's Address</b>	Postal Address: PO Box 3284 Thornton NSW 2322  Quarry Location: Lot 13 DP1024564 Pacific Highway Karuah NSW 2324
<b>Link to full Licence on the EPA Website</b>	<a href="#">EPL 20611</a>

## 2. DUST MONITORING

There are no specific dust criteria listed in the EPL, but the dust criteria (Tables 2-4) are listed in Schedule 3 Condition 13 of Project Approval 09\_0175.

**Table 2 PA 09\_0175 Long term impact assessment criteria for particulate matter**

<b>Pollutant</b>	<b>Averaging period</b>	<b><sup>4</sup>Criterion</b>
Total suspended particulates (TSP)	Annual	<sup>1</sup> 90 µg/m <sup>3</sup>
Particulate matter < 10 µm (PM <sub>10</sub> )	Annual	<sup>1</sup> 30 µg/m <sup>3</sup>

**Table 3 PA 09\_0175 Short term impact assessment criteria for particulate matter**

<b>Pollutant</b>	<b>Averaging period</b>	<b><sup>4</sup>Criterion</b>
Particulate matter < 10 µm (PM <sub>10</sub> )	Daily	<sup>1</sup> 50 µg/m <sup>3</sup>

**Table 4 PA 09\_0175 Long term impact assessment criteria for Deposited Dust**

<b>Pollutant</b>	<b>Averaging period</b>	<b>Maximum increase in deposited dust level</b>	<b>Maximum total deposited dust level</b>
<sup>3</sup> Deposited dust	Annual	<sup>2</sup> 2 g/m <sup>2</sup> /month	<sup>1</sup> 4 g/m <sup>2</sup> /month

**Notes to Tables 2-4:**

<sup>1</sup> Total impact (ie incremental increase in concentrations due to the project plus background concentrations due to all other sources).

<sup>2</sup> Incremental impact (ie incremental increase in concentrations due to the project on its own).

<sup>3</sup> **Deposited dust** is to be assessed as insoluble solids as defined by Standards Australia, AS/NZS 3580.10.1:2003: Methods for Sampling and Analysis of Ambient Air – Determination of Particulate Matter – Deposited Matter – Gravimetric Method.

<sup>4</sup> Excludes extraordinary events such as bushfires, prescribed burning, dust storms, sea fog, fire, incidents, illegal activities or any other activity agreed by the Secretary in consultation with EPA.

All dust monitoring is undertaken in accordance with the *Approved Methods of Sampling and Analysis of Air Pollutants in NSW* (EPA, 2007).

Dust deposition and TSP/PM<sub>10</sub> monitoring is undertaken at Karuah East Quarry at the locations listed in **Table 5**.

**Table 5 Air Quality Monitoring Locations for Karuah East Quarry**

Site ID	EPL ID	Location	Address	GPS Coordinates
DDG 1	MP 4	South-East of Karuah East Quarry	5760 Pacific Hwy, Karuah NSW 2324	32°38'04"S 151°59'58"E
DDG 2	MP 5	South-East of Karuah East Quarry	5770 Pacific Hwy, Karuah NSW 2324	32°38'02"S 152°00'09"E
DDG 3	MP 6	East of Karuah East Quarry	DP 1024341, Karuah	32°37'57"S 151°59'41"E
DDG 4	MP 7	West of Karuah East Quarry	21 Halloran Rd, North Arm Cove NSW 2324	32° 37' 30.87"S 152°01'10.18"E
DDG 5	MP 8	West of Karuah East Quarry	Lot 21/DP 1024341 Karuah NSW 2324	32° 37' 55.33"S 152°00'2.74"E
HVAS (TSP/PM <sub>10</sub> )	MP 9	South-East of Karuah East Quarry	5770 Pacific Hwy, Karuah NSW 2324	32°38'03"S 152°00'09"E

## 2.1 Dust Deposition Results

Dust deposition results for December 2019 and the year to date are shown in **Table 6**.

**Table 6 Insoluble Solids (g/m<sup>2</sup>/month) for the Year to Date**

Date	DDG 1	DDG 2	DDG 3	DDG 4	DDG 5
08/01/2018 to 05/02/2018	1.5	0.8	1.3	1.0	0.7
05/02/2018 to 05/03/2018	1.6	1.0	1.5	1.5	2.0
05/03/2018 to 03/04/2018	0.6	0.6	1.1	2.6	0.9
03/04/2018 to 01/05/2018	0.8	1.0	1.0	1.7	0.7
01/05/2018 to 30/05/2018	0.9	0.5	0.7	1.1	0.3
30/05/2018 to 27/06/2018	0.6	0.5	0.4	0.9	0.5
27/06/2018 to 26/07/2018	0.7	0.6	0.6	1.2	0.6
26/07/2018 to 23/08/2018	0.9	0.9	0.9	1.3	0.8
23/08/2018 to 20/09/2018	1.6	1.0	0.6	0.7	0.9
20/09/2018 to 26/10/2018	1.2	0.9	0.6	1.0	1.0
26/10/2018 to 23/11/2018	1.5	3.4	1.1	1.1	2.1
23/11/2018 to 21/12/2018	1.3	0.6	0.1	3.0	1.2

<b>21/12/2018 to 18/01/2019</b>	0.8	0.4	2.2	0.2	0.9
<b>18/01/2019 to 18/02/2019</b>	1.7	2.7	1.2	1.0	2.5
<b>18/02/2019 to 20/03/2019</b>	2.4	2.5	1.7	1.7	3.7
<b>20/03/2019 to 16/04/2019</b>	2.1	4.0	0.9	1.0	1.8
<b>16/04/2019 to 15/05/2019</b>	0.8	1.2	0.5	4.8	1.1
<b>15/05/2019 to 12/06/2019</b>	0.4	0.6	0.3	<0.1	0.3
<b>12/06/2019 to 15/07/2019</b>	0.4	0.5	0.2	0.1	0.3
<b>15/07/2019 to 14/08/2019</b>	0.7	0.7	0.3	0.5	0.8
<b>14/08/2019 to 12/09/2019</b>	0.6	2.4	0.7	2.5	0.7
<b>12/09/2019 to 16/10/2019</b>	0.3	0.7	0.1	1.1	0.9
<b>16/10/2019 to 14/11/2019</b>	3.8	2.0	3.5	2.4	2.9
<b>14/11/2019 to 12/12/2019</b>	2.6	2.0	3.1	2.5	4.1
<b><sup>1</sup>Rolling Annual Average</b>	1.4	1.6	1.2	1.5	1.7

**Note <sup>1</sup>:** Rolling Annual Average from the EPL 20611 anniversary date of 12 December.

## 2.2 High Volume Air Sampling Results

The TSP and PM<sub>10</sub> results for December 2019 are shown in **Table 7** with the long term monitoring results displayed in **Figure 1**.

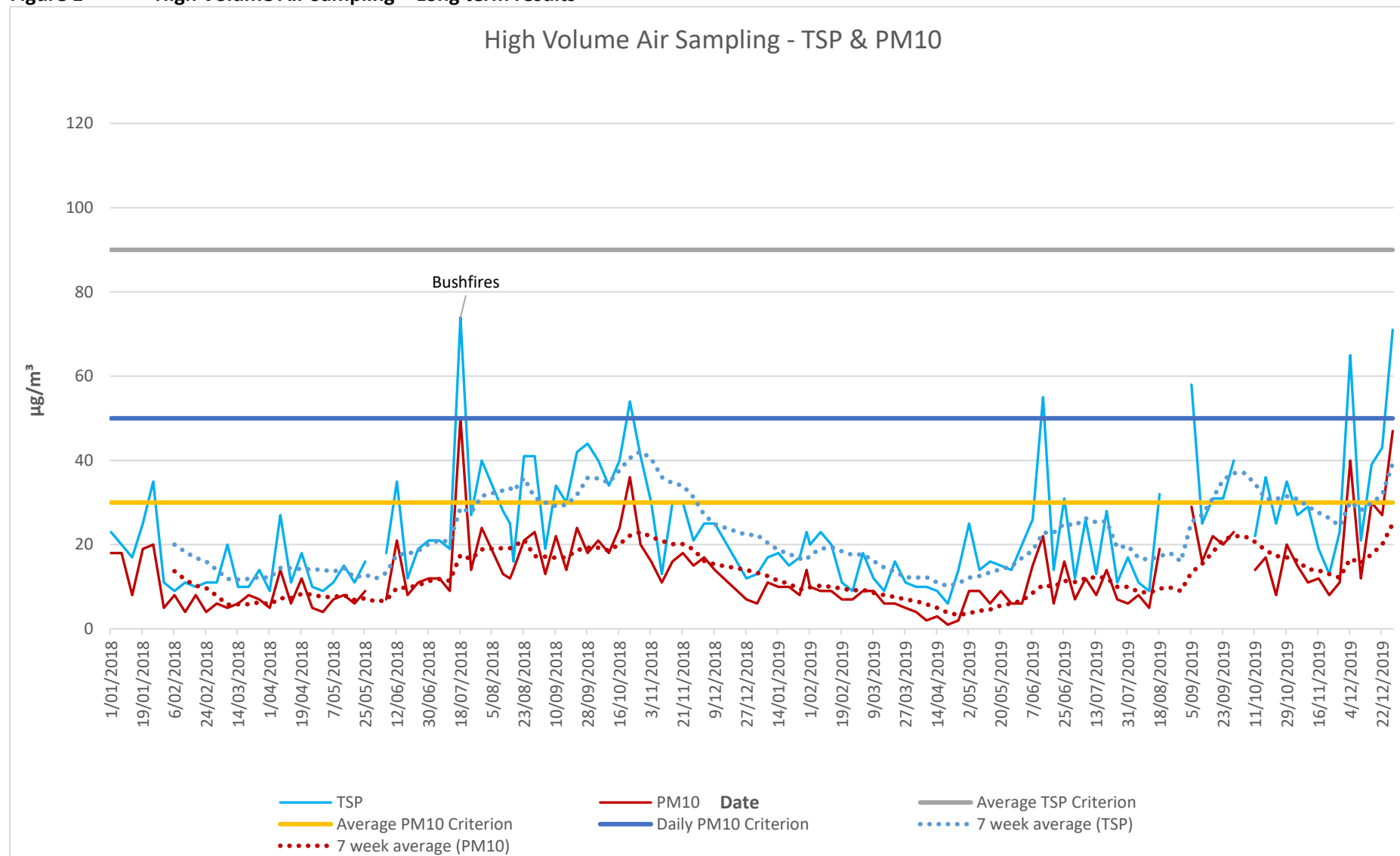
**Table 7 High Volume Air Sampling (µg/m<sup>3</sup>) results**

<b>Date</b>	<b>HVAS TSP (µg/m<sup>3</sup>)</b>	<b>HVAS PM<sub>10</sub> (µg/m<sup>3</sup>)</b>
<b>4/12/2019</b>	63	37
<b>10/12/2019</b>	130	100
<b>16/12/2019</b>	61	29
<b>22/12/2019</b>	55	33
<b>28/12/2019</b>	30	18
<b><sup>1</sup>24hr Max Criteria</b>	<b>N/A</b>	<b>50</b>
<b>Report Average</b>	67.8	43.4
<b><sup>2</sup>Rolling Annual Average</b>	<b>35.7</b>	<b>17.0</b>
<b><sup>1</sup>Annual Average Criteria</b>	<b>90</b>	<b>30</b>

**Note:**

1. Maximum criteria as specified in PA 09\_0175
2. Rolling Annual Average from the EPL 20611 anniversary date of 28 December.
3. Catch up run

**Figure 1 High Volume Air Sampling – Long term results**



## 2.3 Dust Monitoring Results Summary

Dust monitoring results for December were largely influenced by extraordinary events (extreme bushfires), resulting in exceedances of pollutant criteria detailed in Condition 13 of PA 09\_0175. However, Note *d* of Condition 13 excludes monitoring results from extraordinary events; such as bushfires. Therefore, no non-compliances were recorded. The insoluble dust levels recorded at DDG1, DDG2, DDG3, DDG4 and DDG5 were complaint.

## 3. BLAST MONITORING RESULTS

The conditions stipulated for blasting is referred to in Condition L5 and M7 of EPL 20611 and Schedule 3, Condition 8 of PA 09\_0175. Blast monitoring is undertaken at every blast. **Table 8** summarises the blast monitoring criteria.

**Table 8** Blasting criteria

Location	Airblast overpressure (dB(Lin Peak))	Ground vibration (mm/s)	Allowable exceedance
Any residence on privately-owned land, or any public infrastructure	120	10	0%
	115	5	5% of the total number of blasts over a period of 12 months

Summary of blasting results are shown in **Table 9**.

**Table 9** Blast Monitoring Results

Date and time	Overpressure and vibration	Location B (Nearest Residence)
6/12/2019 1:04 PM	Overpressure dB(L)	104.8
	Vibration (mm/s)	0.75
19/12/2019 11:36 AM	Overpressure dB(L)	101.9
	Vibration (mm/s)	0.68

## 4. NOISE MONITORING

Schedule 3 Condition 3 of the Project Approval and Condition L4.1 of the EPL requires Karuah East Quarry to ensure noise generated by Quarry operations does not exceed criteria outlined in **Table 10**.

**Table 10** Operational Noise Criteria (dB(A) LA<sub>eq(15min)</sub>)

Location	Criteria ( <sup>1</sup> day)
Residence on Lot 11 DP 10244564	43
A	40
B	37
G	38

Location	Criteria ( <sup>1</sup> day)
All other residence	35

**Note <sup>1</sup>:** A day is defined as the period from 7am to 6pm Monday to Saturday and 8am to 6pm Sunday and Public Holidays.

The noise criteria shown in **Table 10** is not indicative of the construction noise criteria for the Karuah East Quarry project. Construction noise criteria has been developed based on the *NSW EPA Interim Construction Noise Guideline* for each location and is set out in Table 9 of the approved [Noise Management Plan \(SLR, 2015\)](#).

In accordance with Schedule 3 Condition 5 and Condition 7 of the Project Approval and the [Noise Management Plan \(SLR, 2015\)](#) a noise monitoring program has been implemented. Summary of this monitoring program is outlined in **Table 11**.

**Table 11 Noise Monitoring Program**

Construction Noise Monitoring			
Monitoring Method	<sup>1</sup> Location	Frequency	<sup>2</sup> Criteria (dB(A) LA <sub>eq(15min)</sub> )
Attended noise monitoring	F	At the commencement of new activities and a min of once per quarter.	54
Attended noise monitoring	G	At the commencement of new activities and a min of once per quarter.	44
Operational Noise Monitoring			
Monitoring Method	<sup>1</sup> Location	Frequency	<sup>2</sup> Criteria
Attended noise monitoring	F, G	Quarterly	As per Table 10, 12 and 13 <a href="#">Noise MP (SLR, 2015)</a>
Unattended noise monitoring	G	Quarterly	As per Table 10, 12 and 13 <a href="#">Noise MP (SLR, 2015)</a>

**Note:**

- Monitoring locations are shown in Appendix 1.
- Criteria is for daytime limits. Daytime is defined as the period from 7am to 6pm Monday to Saturday and 8am to 6pm Sunday and Public Holidays.

#### 4.1 Operator Attended Monitoring Results

The results of the operator attended noise surveys are presented in **Table 12**. Ambient noise levels given in the tables include all noise sources such as traffic, insects, birds, adjacent quarry and Karuah East Quarry. The table provides the following information:

- Monitoring location and serial number of the noise logger;
- Date, start time, and Wind velocity (m/s) at the measurement location; and
- Typical maximum (L<sub>Amax</sub>) and contributed noise levels.

Quarry contributions listed in the tables are from Karuah East Quarry and are stated only when a contribution could be quantified.



**Table 12 Operator Attended Noise Survey Results**

Location	Date/Start Time/ Weather	Primary Noise Descriptor (dBA re 20 µPa)					Description of Noise Emissions and Typical Maximum Noise Levels (dBA)
		L <sub>Amax</sub>	L <sub>A1</sub>	L <sub>A10</sub>	L <sub>A90</sub>	L <sub>Aeq</sub>	
<b>F</b> <b>Lot 50 DP</b> <b>1036893</b>	03/12/2019	65	55	50	44	49	Pacific Highway 45
	12:35 pm W = 10 kph	Karuah East Quarry inaudible					Insects 40 Birds 45-50
<b>G</b> <b>Lot 3 DP</b> <b>1032636</b>	03/12/2019	78	57	51	45	49	Birds 40 – 45
	01:22 pm W = 10 kph	Karuah East Quarry inaudible					Pacific Highway 40

## 4.2 Unattended Continuous Monitoring Results

**Table 13 Unattended Continuous Noise Monitoring Results**

INP Period	Units	L <sub>A1</sub>	L <sub>A10</sub>	L <sub>A90</sub>	L <sub>Aeq</sub>
Daytime	dBA	56	49	41	48
Evening	dBA	55	49	40	47
Night <sup>3</sup>	dBA	53	49	39	46

## 4.3 Noise Monitoring Summary

The attended noise monitoring conducted during December 2019 identified that Karuah East Quarry was not audible at location F and G.

## 5. SURFACE WATER MONITORING

Condition M2 of the EPL outlines the requirement to monitor surface water discharges from Karuah East Quarry via the three licensed discharge points (LDP001, LDP002, LDP003). The *Statement of Commitments* (Appendix 6, PA 09\_0175) requires additional surface water monitoring to be undertaken for the first twelve months of operations. This additional water monitoring requires monthly sampling to be undertaken at the three licensed discharge points and at four locations on Yalimbah and Bulga Creeks when in flow.

All discharged water from the three licensed discharge points are required to meet the water quality concentration limits as stipulated in Condition L2.4 of the EPL. This criterion is shown in **Table 14** below.

**Table 14 Surface Water Discharge Monitoring Criteria**

Sampling Points	Pollutant	Unit	EPL Limit
LDP001 (Dam 1)	pH	pH units	6.5 – 8.5
LDP002 (Dam 2)	TSS	mg/L	40
LDP003 (Dam 3)	Oil & Grease	mg/L	5 and/or none visible

## 5.1 Discharge Monitoring Results

There were no discharges during the month of December 2019.

## 5.2 Monthly Monitoring Results

Monthly water sampling was undertaken on the 12 December 2019.

Summary of monthly monitoring results is shown in **Table 15** and **Table 16**.

**Table 15 Surface Water Monthly Monitoring Results – Sediment Dams**

Date	LDP001 (Dam 1)				LDP002 (Dam 2)				LDP003 (Dam 3)			
	pH (Lab)	TSS	Oil & Grease	EC	pH (Lab)	TSS	Oil & Grease	EC	pH (Lab)	TSS	Oil & Grease	EC
19/01/2018	7.29	9	<5	665	7.29	37	<5	434	7.08	10	6	925
16/02/2018	7.71	9	<5	662	6.48	22	<5	548	7.21	16	<5	1075
20/03/2018	6.95	19	<5	574	6.81	6	<5	535	7.37	27	<5	788
18/04/2018	6.40	5	<5	529	7.70	17	<5	490	7.10	17	<5	830
18/05/2018	5.86	12	<5	555	5.80	4	<5	345	6.48	21	<5	654
19/06/2018	7.33	76	<5	496	7.51	828	<5	171	7.28	418	<5	347
20/07/2018	6.50	12	<5	600	6.80	5	<5	540	7.40	63	<5	570
17/08/2018	6.71	12	<5	553	6.64	5	<5	604	7.16	14	<5	622
14/09/2018	7.09	33	<5	508	6.37	7	<5	405	6.94	6	<5	520
19/10/2018	6.78	81	<5	593	6.77	191	<5	268	8.07	38	<5	688
15/11/2018	7.42	76	<5	1035	6.76	14	<5	470	8.01	23	<5	833
18/12/2018	7.20	98	<5	430	4.62	162	<5	193	7.57	341	<5	758
18/01/2019	7.13	10	<5	975	6.55	17	<5	533	8.15	43	<5	975
18/02/2019	7.12	19	<5	616	6.53	19	<5	563	8.35	23	<5	1140
20/03/2019	6.89	44	<5	494	5.29	185	<5	182	7.57	30	<5	915
16/04/2019	8.03	415	<5	538	7.30	109	<5	265	7.49	164	<5	998
15/05/2019	6.78	406	<5	520	6.71	135	<5	327	7.69	19	<5	1049
12/06/2019	6.5	13	<5	631	6.37	25	<5	288	7.63	12	<5	846
15/07/2019	6.79	19	<5	524	6.37	9	<5	468	6.96	6	<5	1036
14/08/2019	6.8	17	<5	780	6.67	21	<5	472	7.97	<5	<5	1230
12/09/2019	6.47	15	<5	706	6.56	56	<5	414	8.03	15	<5	1144
16/10/2019	7.11	187	<5	561	6.73	13	<5	1074	6.98	25	<5	993
14/11/2019	6.95	164	<5	616	6.72	9	<5	1235	8.58	10	<5	1172
12/12/2019					7.2	26	<5	1417	7.51	25	<5	1309

**Units:** pH in pH units, Total Suspended Solids (TSS) in mg/L, Oil & Grease in mg/L, Electrical Conductivity (EC) in µS/cm

**Table 16 Surface Water Monthly Monitoring Results – Drain lines**

Date	SW1 (Bulga Creek)				SW2 (Bulga Creek)				SW4 (Yalimbah Creek)			
	pH (Lab)	TSS	Oil & Grease	EC	pH (Lab)	TSS	Oil & Grease	EC	pH (Lab)	TSS	Oil & Grease	EC
19/01/2018	-	-	-	-	-	-	-	-	-	-	-	-
16/02/2018	-	-	-	-	-	-	-	-	-	-	-	-
20/03/2018	-	-	-	-	-	-	-	-	-	-	-	-
18/04/2018	-	-	-	-	6.60	9	<5	550	-	-	-	-
18/05/2018	-	-	-	-	5.75	5	<5	536	-	-	-	-
19/06/2018	-	-	-	-	7.10	72	<5	255	6.55	61	<5	259
20/07/2018	-	-	-	-	6.50	14	<5	410	-	-	-	-
17/08/2018	-	-	-	-	6.52	16	<5	385	-	-	-	-
14/09/2018	-	-	-	-	6.72	10	<5	304	-	-	-	-
19/10/2018	-	-	-	-	6.34	20	<5	533	-	-	-	-
15/11/2018	-	-	-	-	6.57	19	<5	426	-	-	-	-
18/12/2018	-	-	-	-	6.45	63	<5	520	-	-	-	-
18/01/2019	-	-	-	-	6.86	24	<5	533	-	-	-	-
1/06/2019	-	-	-	-	6.17	11	<5	531	-	-	-	-
15/07/2019	-	-	-	-	6.99	<5	<5	526	-	-	-	-
14/08/2019	-	-	-	-	6.45	8	<5	501	-	-	-	-
12/09/2019	-	-	-	-	6.86	18	<5	563	-	-	-	-
16/10/2019	-	-	-	-	6.7	26	<5	570	-	-	-	-
14/11/2019	-	-	-	-	6.92	22	<5	562	-	-	-	-
12/12/2019	-	-	-	-	7.24	21	<5	584	-	-	-	-

Units: pH in pH units, Total Suspended Solids (TSS) in mg/L, Oil & Grease in mg/L, Electrical Conductivity (EC) in  $\mu\text{S}/\text{cm}$

### 5.3 Surface Water Results Summary

There were no discharges during the month of December 2019.

The monthly water monitoring was conducted on the 12 December. Monitoring of Dam 1 was not undertaken as the water level was too low which presented a safety hazard for the field officer.

## 6. GROUNDWATER MONITORING

Groundwater monitoring is undertaken to meet the *EA Statement of Commitments* (Appendix 6, PA 09\_0175) and Section 8.2 [Water Management Plan \(SLR, 2015\)](#). Groundwater levels are monitored quarterly and water quality biannually at four groundwater monitoring bores (piezometers). Details of this monitoring program is shown in **Table 17**. Refer to Appendix 1 for piezometer locations.

**Table 17 Groundwater Monitoring Program**

Piezometer	Location	Water Level	Water Quality
		monitoring frequency	monitoring frequency
<sup>1</sup> BH205	Lot 13/DP1024564	Quarterly	Biannually
<sup>2</sup> BH207	Lot 13/DP1024564	Quarterly	Biannually
BH208	Lot 21/DP1024341	Quarterly	Biannually
BH303	Lot 21/DP1024341	Quarterly	Biannually

**Note:** 1. Piezometer BH205 was relocated approximately 30m to the west on 13 March 2017  
2. Piezometer BH207 was relocated approximately 60m to the north on 26 September 2016.

## 6.1 Groundwater Levels

**Table 18** Groundwater Levels

Date	Unit	<sup>2</sup> BH205	<sup>3</sup> BH207	BH208	BH303
17/01/2018	<sup>1</sup> metres	21.98	9.12	20.27	30.67
18/04/2018	<sup>1</sup> metres	21.69	9.20	20.47	30.80
26/07/2018	<sup>1</sup> metres	20.46	8.89	20.49	30.86
31/10/2018	<sup>1</sup> metres	20.40	9.30	19.98	30.80
18/01/2019	<sup>1</sup> metres	20.11	9.21	20.44	30.96
30/04/2019	<sup>1</sup> metres	20.30	9.20	20.45	30.61
23/07/2019	<sup>1</sup> metres	19.68	9.08	20.57	31.09
30/10/2019	<sup>1</sup> metres	18.6	8.23	20.55	30.70

**Note:** 1. Groundwater levels are measured in metres below ground level.

# **APPENDIX 1**

## **Monitoring Locations**



# Karuah East Quarry

Monitoring Locations

## Legend

- Attended Noise
- Dust Deposition
- Groundwater
- High Volume Air Samplers
- Surface Water
- Unattended Noise



Google Earth

Image © 2019 CNES / Airbus

© 2018 Google

900 m