



Grounded in Quality

A proud member of the Hunter Construction Group

Karuah East Quarry

Environmental Monitoring Report:

September 2021



Table of Contents

| | | |
|-------|---------------------------------------|----|
| 1 | Introduction | 3 |
| 2 | Air Quality Monitoring | 4 |
| 2.1 | Deposited Dust Monitoring | 5 |
| 2.2 | High Volume Air Sampling | 5 |
| 3 | Blast Monitoring | 7 |
| 4 | Noise Monitoring | 8 |
| 4.1 | Attended Monitoring | 8 |
| 4.2 | Unattended Noise Monitoring | 8 |
| 5 | Water Monitoring | 10 |
| 5.1 | Surface Water Monitoring | 10 |
| 5.2 | Discharge Monitoring | 13 |
| 5.2.1 | Dam 1 (LDP1)..... | 13 |
| 5.2.2 | Dam 2 (LDP2)..... | 13 |
| 5.2.3 | Dam 3 (LDP3)..... | 13 |
| 6 | Weather Monitoring | 14 |
| 7 | Reporting..... | 17 |
| 7.1 | Community Consultative Committee..... | 17 |
| 7.2 | Production..... | 17 |
| 7.3 | Non-Compliance | 17 |
| 7.4 | Complaints | 17 |

| | | |
|----------|---|----|
| Table 1 | Environmental Protection Licence 20611 information | 3 |
| Table 2 | Project Approval 09_0175 information..... | 3 |
| Table 3 | PA 09_0175 Long Term Assessment Criteria for Deposited Dust | 4 |
| Table 4 | PA 09_0175 Long Term Impact Assessment Criteria for Particulate Matter | 4 |
| Table 5 | PA 09_0175 Short Term impact Assessment Criterion for Particulate Matter | 4 |
| Table 6 | Air quality monitoring locations..... | 4 |
| Table 7 | Deposited dust monitoring results..... | 5 |
| Table 8 | High Volume Air Sampling ($\mu\text{g}/\text{m}^3$) results..... | 5 |
| Table 9 | Blast monitoring criteria as per the EPL and Consent..... | 7 |
| Table 10 | Blast monitoring results | 7 |
| Table 11 | Operational Noise Criteria (dB(A) $\text{LA}_{\text{eq}(15\text{min})}$) | 8 |
| Table 12 | Noise monitoring locations | 8 |
| Table 13 | Attended noise monitoring results (extracted from quarterly noise monitoring report prepared by EMM September 2021) | 9 |
| Table 14 | Water monitoring results | 11 |
| Table 15 | EPL20611 - Pollutant concentration limits..... | 13 |
| Table 16 | Discharge monitoring – LDP1 | 13 |

| | |
|---|----|
| Table 17 Discharge monitoring – LDP2..... | 13 |
| Table 18 Discharge monitoring – LDP3..... | 13 |

Appendix 1

Monitoring Locations

1 INTRODUCTION

This report has been completed to meet the requirements of Section 66(6) of the *Protection of the Environment Operations Act 1997* and the NSW Environmental Protection Authority's (EPA) *Requirements for Publishing Pollution Monitoring Data* (EPA, 2013). This report summarises the required monitoring data under *Environmental Protection Licence 20611* (the EPL) (see Table 1) and *Project Approval 09_0175* (the Consent) (see Table 2) for Karuah East Quarry (the Quarry).

Table 1 Environmental Protection Licence 20611 information

| | |
|--|--|
| Environmental Protection Licence Number | 20611 |
| Licensee's Name | Karuah East Quarry Pty Limited |
| Licensee's Address | Licensee Postal Address: PO Box 3284 Thornton NSW 2322. Premises Address: Karuah East Quarry, Blue Rock Close, Karuah NSW 2324. |
| Link to Full Licence on the EPA Website | https://apps.epa.nsw.gov.au/prpoeoapp/ |

Table 2 Project Approval 09_0175 information

| | |
|--|---|
| Development Application | PA 09_0175 |
| Applicant | Karuah East Quarry Pty Limited |
| Approval Authority | Minister for Planning |
| Link to Full Development Approval on Major Projects Planning Portal | https://www.planningportal.nsw.gov.au/major-projects/project/15026 |

A summary of the environmental monitoring data for September 2021 is covered in this report.

Tables throughout this report provide key monitoring information from the EPL and the Consent, such as:

- location of monitoring;
- pollutant;
- unit of measurement; and
- monitoring frequency required.

Monitoring locations are identified in Appendix 1.

2 AIR QUALITY MONITORING

Dust emissions generated by the Quarry operation must not cause additional exceedances of ambient air quality criterion outlined in *Schedule 3, Condition 13* of the Consent (see Table 3, Table 4 and Table 5). Deposited dust and TSP/PM₁₀ monitoring is undertaken at the locations listed in Table 6.

Table 3 PA 09_0175 Long Term Assessment Criteria for Deposited Dust

| Pollutant | Averaging Period | Maximum Increase in Deposited Dust Level ¹ | Maximum Total Deposited Dust Level ¹ |
|----------------|------------------|---|---|
| Deposited dust | Annual | 2 g/m ² /month | 4 g/m ² /month |

Note 1: Deposited dust is assessed as insoluble solids as defined by AS 3580.10.1-2003.

Table 4 PA 09_0175 Long Term Impact Assessment Criteria for Particulate Matter

| Pollutant | Average period | Criterion |
|---|----------------|----------------------|
| Total suspended particulate (TSP) matter | Annual | 90 µg/m ³ |
| Particulate matter <10 µm (PM ₁₀) | Annual | 30 µg/m ³ |

Table 5 PA 09_0175 Short Term impact Assessment Criterion for Particulate Matter

| Pollutant | Averaging period | Criterion |
|---|------------------|----------------------|
| Particulate matter <10 µm (PM ₁₀) | 24 hour | 50 µg/m ³ |

Table 6 Air quality monitoring locations

| Site ID | EPL ID | Location | Address | GPS Coordinates |
|---------------------------------|--------|----------------------------------|---|-----------------------------------|
| DDG 1 | MP 4 | South-West of Karuah East Quarry | 5760 Pacific Hwy, Karuah NSW 2324 | 32°38'04"S 151°59'58"E |
| DDG 2 | MP 5 | South-West of Karuah East Quarry | 5770 Pacific Hwy, Karuah NSW 2324 | 32°38'02"S 152°00'09"E |
| DDG 3 | MP 6 | South-West of Karuah East Quarry | DP 1024341, Karuah | 32°37'57"S 151°59'41"E |
| DDG 4 | MP 7 | East of Karuah East Quarry | 21 Halloran Rd North Arm Cove NSW 2324 | 32° 37' 30.87"S 152°01'10.18"E |
| DDG 5 | MP 8 | South-West of Karuah East Quarry | Lot 21 DP 1024341 Karuah NSW 2324 | 32° 37' 55.33"S 152°00'2.74"E |
| HVAS (TSP/PM ₁₀) | MP 9 | South-West of Karuah East Quarry | 5770 Pacific Hwy, Karuah NSW 2324 | 32°38'03"S 152°00'09"E |

All dust monitoring is undertaken in accordance with the *Approved Methods of Sampling and Analysis of Air Pollutants in NSW* (EPA, 2007).

2.1 DEPOSITED DUST MONITORING

Deposited dust results for the twelve months prior to and including September 2021 are shown in Table 7.

Table 7 Deposited dust monitoring results

| Date On | Date Off | DDG 1 | DDG 2 | DDG 3 | DDG 4 | DDG 5 |
|--------------------|-----------|-------|-------|-------|-------|----------------|
| 1/10/2020 | 2/11/2020 | 0.2 | 0.1 | 1.3 | 0.7 | 0.6 |
| 2/11/2020 | 3/12/2020 | 3.2 | 2.3 | 0.8 | 0.7 | 4.7 |
| 3/12/2020 | 4/01/2021 | 0.3 | 0.5 | 0.1 | 0.4 | 1.5 |
| 4/01/2021 | 4/02/2021 | 1.5 | 0.9 | 0.7 | 0.3 | 1.2 |
| 4/02/2021 | 5/03/2021 | 0.4 | 0.4 | 0.7 | 0.2 | 1.6 |
| 5/03/2021 | 6/04/2021 | 0.8 | 1.3 | 0.5 | 0.7 | 0.7 |
| 6/04/2021 | 6/05/2021 | 0.7 | 1.4 | 2.2 | 3.7 | 1.9 |
| 6/05/2021 | 3/06/2021 | 0.3 | 0.3 | 0.3 | 0.4 | 0.6 |
| 3/06/2021 | 5/07/2021 | 0.2 | 0.4 | 0.2 | 0.2 | - ¹ |
| 5/07/2021 | 5/08/2021 | 0.5 | 0.4 | 0.5 | 1.0 | 0.2 |
| 5/08/2021 | 6/09/2021 | 2.3 | 0.8 | 1.4 | 0.6 | 1.2 |
| 6/09/2021 | 6/10/2021 | 0.7 | 0.4 | 0.5 | 0.4 | 0.4 |
| YTD average | | 0.9 | 0.8 | 0.8 | 0.8 | 1.3 |

Note 1: DDG5 was not able to be analysed for period 03/06/2021 to 05/07/2021 due to sample jar breaking the laboratory during analysis.

Monitoring results indicate that for the period 6 September 2021 to 6 October 2021, the insoluble solid levels recorded at DDG 1 to DDG 5 monitoring locations were compliant with long term assessment criteria for deposited dust (see Table 3).

2.2 HIGH VOLUME AIR SAMPLING

The TSP and PM₁₀ results for September 2021, the report average and a rolling annual average are shown in are shown in Table 8. Figure 1 illustrates the year-to-date results for HVAS monitoring.

Table 8 High Volume Air Sampling (µg/m³) results

| Run Date | HVAS TSP (µg/m ³) | HVAS PM ₁₀ (µg/m ³) |
|--|-------------------------------|--|
| 6/09/2021 | 25 | 13 |
| 12/09/2021 | 30 | 17 |
| 18/09/2021 | 14 | 9 |
| 24/09/2021 | 17 | 8 |
| 30/09/2021 | 10 | 5 |
| 24hr Average Criteria | N/A | 50 |
| Annual Average Criteria | 90 | 30 |
| Progressive Annual Average ¹ | 17.4 | 10.4 |

Note: 1. The progressive annual average is from 01/01/2020 to 30/09/2021, this is not a measure of compliance.

All HVAS monitoring results for the period to and including September 2021 were compliant with the long term and short term assessment criteria (see Table 4 and Table 5).

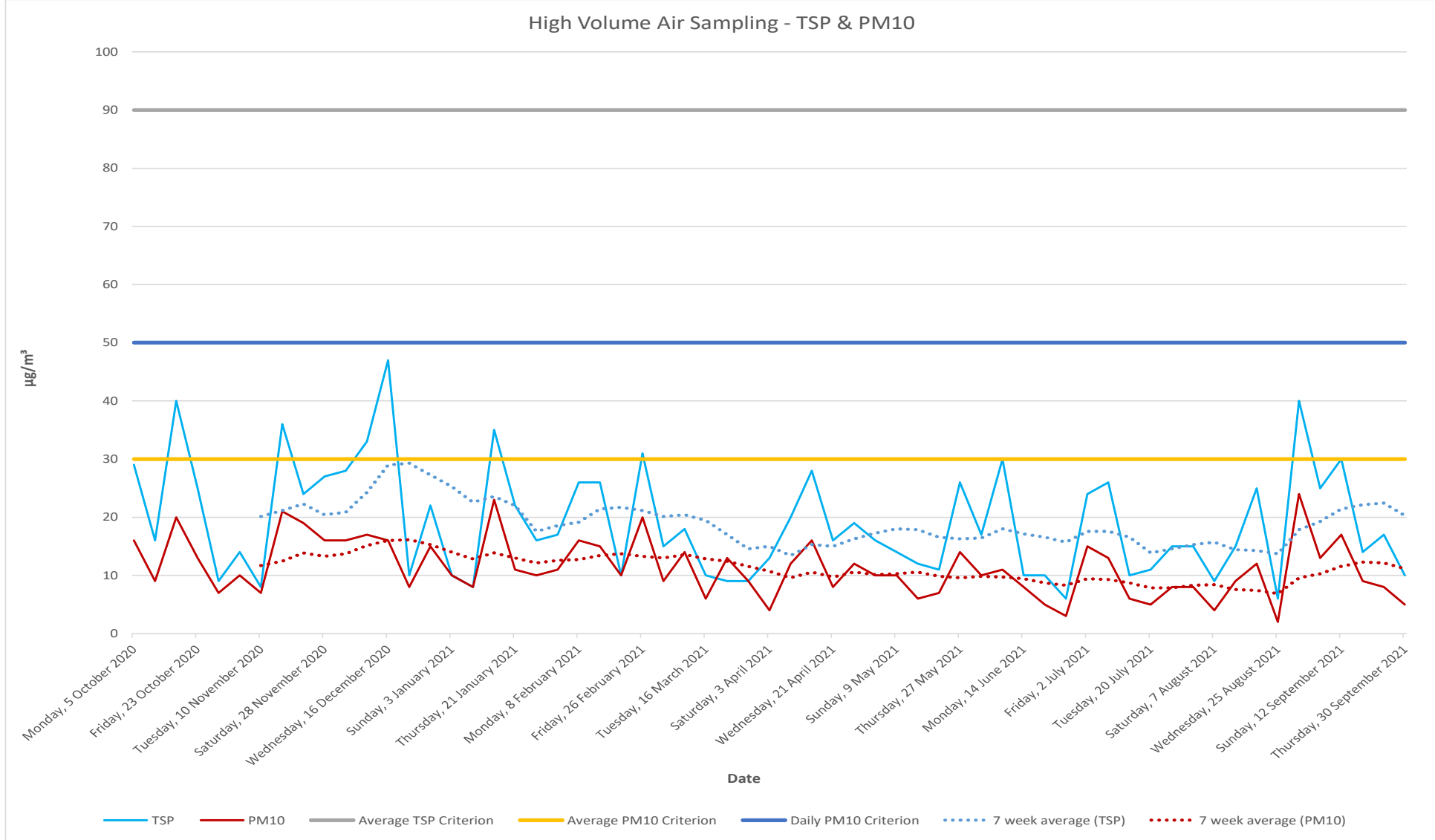


Figure 1 High Volume Air Sampling: Year-to-date results

3 BLAST MONITORING

Blasting must only be carried out between the hours of 9:00 AM and 4:00 PM Monday to Friday. No blasting is permitted on Saturday, Sundays or Public Holidays. Blasting outside of the hours specified by the EPL/Consent, can only take place with the written approval of relevant regulatory authorities.

KEQ conduct monitoring at the nearest residential location (EPL 20611 EPA identification no. 11) to ensure that airblast overpressure level and ground vibration peak particle velocity do not exceed the EPL and Consent criteria (see Table 9).

Table 9 Blast monitoring criteria as per the EPL and Consent

| Parameter | Units of Measure | Frequency | Criteria |
|---|------------------------|------------|--|
| Airblast Overpressure | Decibels (Linear Peak) | All blasts | a) 115 dB for more than 5% of the total number of blasts during each reporting period; and b) 120 dB at any time |
| Ground Vibration Peak Particle Velocity | Millimetres/second | All blasts | a) 5 mm/second for more than 5% of the total number of blasts during each reporting period; and b) 10 mm/second at any time |

There were two blasts conducted in September 2021, see Table 10 for monitoring results.

Table 10 Blast monitoring results

| Date | Time | Overpressure (dB(L)) | Vibration (mm/s) |
|------------|---------|----------------------|------------------|
| 8/09/2021 | 2:47 PM | Nil Trigger | Nil Trigger |
| 23/09/2021 | 3:52 PM | Nil Trigger | Nil Trigger |

The monitoring results show that both blasts did not trigger the blast monitoring equipment, and therefore demonstrates compliance with blasting criteria of the Consent and the EPL.

4 NOISE MONITORING

Noise monitoring is undertaken in accordance with the approved *Noise Management Plan*, the Consent (*Schedule 3, condition 3 to 7*) and the EPL (*conditions L4 and M8*).

As the Quarry is operational with no construction activities being completed, construction noise is not being considered. Table 11 summarises the operational noise criteria.

Noise generated by the Quarry operation must not exceed the criteria specified in *Schedule 3, Condition 14* of the Consent (see Table 11) at the locations identified in Table 12.

Table 11 Operational Noise Criteria (dB(A) LA_{eq}(15min))

| Location | Criteria (day ¹) |
|--------------------------------|------------------------------|
| Residence on Lot 11 DP10244564 | 43 |
| A | 40 |
| B | 37 |
| G | 38 |
| All other residence | 35 |

Note 1: A day is defined as the period from 7am to 6pm Monday to Saturday and 8am to 6pm Sunday and Public Holidays.

In accordance with the Consent, a noise monitoring program has been implemented. A summary of this monitoring program is outlined in Table 12

Table 12 Noise monitoring locations

| Monitoring Method | Location | Frequency | Criteria |
|-----------------------------|------------|-----------|-------------------|
| Attended noise monitoring | A, B, F, G | Quarterly | Refer to Table 11 |
| Unattended noise monitoring | G | Quarterly | Refer to Table 11 |

4.1 ATTENDED MONITORING

Attended noise monitoring is required to be undertaken at locations (A, B, F and G) quarterly. The most recent attended noise monitoring was undertaken in August 2021. The results for the most recent attended monitoring program are shown in Table 13. The results show background noise levels include noise sources such as wind noise, traffic from the nearby Pacific Highway and wildlife such as insects and birds.

The Quarry operation was inaudible at all locations except for Location G, where engine revs and the processing plant were audible, however; compliant with noise criteria.

4.2 UNATTENDED NOISE MONITORING

A review of the historical unattended noise monitoring data by expert noise consultants (EMM) found no evident trends associated with Karuah East Quarry operations. As a result of this review, it was deemed that the unattended noise monitoring component of the quarterly compliance noise monitoring program was unnecessary.

Table 13 Attended noise monitoring results (extracted from quarterly noise monitoring report prepared by EMM September 2021)

| Location | Date | Start time (Period) | Total noise levels, dB | | | | | | | Site contribution, dB | EPL / PA Limits, dB | | Meteorological conditions ² EPL limits apply (Y/N) | Exceedance, dB | Comments |
|---|------|---------------------|------------------------|------------------|------------------|------------------|-----------------|-------------------|------------------|-----------------------|------------------------------|------------------|--|----------------|---|
| | | | L _{Amin} | L _{A90} | L _{Aeq} | L _{A10} | L _{A1} | L _{Amax} | L _{Ceq} | | LFN mod. Factor ¹ | L _{Aeq} | L _{Aeq} | | |
| A | 31/8 | 10:36 | 39 | 45 | 50 | 53 | 55 | 62 | 65 | Nil | IA | 40 / 42 | 1.2 m/s @ 359° A stability class Y | Nil | Karuah East Quarry inaudible. Traffic on the Pacific Highway and bird noise consistently audible. |
| B | 31/8 | 10:55 | 42 | 52 | 61 | 66 | 69 | 74 | 70 | Nil | IA | 37 / 40 | 1.4 m/s @ 0° A stability class Y | Nil | Karuah East Quarry inaudible. Traffic on the Pacific Highway and bird noise consistently audible. Karuah Quarry occasionally audible (37 dB L _{Aeq,15 minute}). |
| F | 31/8 | 11:13 | 36 | 41 | 47 | 49 | 54 | 70 | 59 | Nil | IA | 35 / 40 | 1.0 m/s @ 41° A stability class Y | Nil | Karuah East Quarry inaudible. Distant traffic on the Pacific Highway and bird noise consistently audible. Wind in foliage occasionally audible. |
| G | 31/8 | 11:37 | 33 | 35 | 43 | 46 | 54 | 60 | 63 | Nil | 37 | 38 / 43 | 1.4 m/s @ 314° A stability class Y | Nil | Karuah East Quarry engine revs and processing plant consistently audible with alarms and bangs on occasion. Distant traffic on the Pacific Highway and bird noise consistently audible. Aircraft noise, dogs barking and wind in foliage occasionally audible. |
| Notes: 1. Modifying factor correction for LFN in accordance with Fact sheet C of the NPfI. 2. Meteorological data were taken as an average over 15 minutes from the Karuah East Quarry on-site weather station (Refer to Section 5.1). 3. IA = inaudible. 4. N/A = not applicable. | | | | | | | | | | | | | | | |

5 WATER MONITORING

5.1 SURFACE WATER MONITORING

Monthly water monitoring was undertaken on 6 September 2021 in accordance with the *Surface Water Monitoring Program* outlined in the *KEQ Water Management Plan (2015)*. Results are displayed in Table 14 accompanied with the EPL discharge criterion and ANZECC (2000) Guidelines. These results do not determine compliance, they are used to analyse trends and assist with water management.

Table 14 Water monitoring results

| Parameter | Units of measure | EPL 20611 concentration limit during discharge | Dam 1 | Dam 2 | Dam 3 | SW 2 | SW 3 (Not flowing) |
|--|----------------------|--|---------|---------|---------|---------|--------------------|
| Oil and grease | Milligrams per litre | 5 and/or non-visible | <5 | <5 | <5 | <5 | - |
| pH | pH | 6.5 – 8.5 | 6.82 | 6.72 | 7.00 | 6.67 | - |
| Total suspended solids | Milligrams per litre | 40 | 550 | 6 | 47 | 37 | - |
| | | ANZECC Guidelines¹ | | | | | |
| Conductivity | µS/cm | 125 – 2200 | 603 | 1201 | 689 | 641 | - |
| Total dissolved solids | mg/L | -- | 365 | 981 | 429 | 390 | - |
| Total phosphorus | mg/L | 0.025 | 0.3 | 0.01 | 0.04 | 0.04 | - |
| Ammonia | mg/L | 0.2 | 0.04 | 0.1 | 0.06 | 0.03 | - |
| Nitrogen (Nitrate) | mg/L | 0.350 | 14 | 1.54 | 11.7 | 9.35 | - |
| Total hardness (as CaCO ₃) | mg/L | -- | 35 | 426 | 86 | 70 | - |
| Arsenic | mg/L | 0.024 | 0.002 | <0.001 | <0.001 | <0.001 | - |
| Cadmium | mg/L | 0.0002 | <0.0001 | <0.0001 | <0.0001 | <0.0001 | - |
| Calcium | mg/L | -- | 4 | 151 | 23 | 15 | - |
| Chromium | mg/L | 0.001 | 0.012 | <0.001 | <0.001 | <0.001 | - |
| Copper | mg/L | 0.0014 | 0.014 | 0.002 | 0.002 | 0.001 | - |
| Lead | mg/L | 0.0034 | 0.007 | <0.001 | <0.001 | <0.001 | - |
| Magnesium | mg/L | -- | 6 | 12 | 7 | 8 | - |

| | | | | | | | |
|-----------|------|--------|-------|--------|-------|-------|---|
| Manganese | mg/L | 1.9 | 0.459 | 0.246 | 0.066 | 0.032 | - |
| Nickel | mg/L | 0.011 | 0.011 | <0.001 | 0.002 | 0.001 | - |
| Potassium | mg/L | -- | 2 | 1 | 2 | 2 | - |
| Sodium | mg/L | -- | 106 | 47 | 101 | 102 | - |
| Vanadium | mg/L | -- | 0.05 | <0.01 | <0.01 | <0.01 | - |
| Zinc | mg/L | 0.0312 | 0.08 | 0.009 | 0.014 | 0.026 | - |

Note 1 – Key default trigger values presented in ANZECC 2000 for slightly disturbed upland rivers in NSW. Heavy metals based on hard water (120-179 mg CaCO³/L).

SW3 creek not flowing.

5.2 DISCHARGE MONITORING

Condition L2 of the EPL outlines the requirement to monitor water discharges from the Quarry via the licensed discharge points (LDP1, LDP2 and LDP3), see Table 15.

Table 15 EPL20611 - Pollutant concentration limits

| Pollutant | Units of Measure | Concentration Limit |
|------------------------|----------------------|---------------------|
| Oil and Grease | Visible | 5 &/or none visible |
| pH | pH units | 6.5 – 8.5 |
| Total suspended solids | Milligrams per litre | 40 |

5.2.1 Dam 1 (LDP1)

There was no discharging from Dam 1 during the month of September (see Table 16).

Table 16 Discharge monitoring – LDP1

| Date | pH | Total suspended solids | Oil and grease | Controlled |
|------|----|------------------------|----------------|------------|
| - | - | - | - | - |

5.2.2 Dam 2 (LDP2)

There was no discharging from Dam 2 during the month of September (see Table 17).

Table 17 Discharge monitoring – LDP2

| Date | pH | Total suspended solids | Oil and grease | Controlled |
|------|----|------------------------|----------------|------------|
| - | - | - | - | - |

5.2.3 Dam 3 (LDP3)

Dam 3 had a total of one day discharging during the month of September. Daily monitoring during discharging demonstrated compliance with pollution concentration limits (see Table 18).

Table 18 Discharge monitoring – LDP3

| Date | pH | Total suspended solids | Oil and grease | Controlled |
|-----------|-----|------------------------|----------------|------------|
| 3/09/2021 | 7.6 | 34 | None visible | Yes |

6 WEATHER MONITORING

Karuah East Quarry has a permanent meteorological station to monitor various weather parameters including temperature, wind speed/direction, solar radiation and rainfall. Figure 2 shows the recorded results for the local weather during September 2021.

A wind rose is a graphic tool used to depict the average direction and speed of the wind over a recorded period. Figure 3 shows the wind rose generated from data gathered during September 2021.

Monthly Weather Summary



Site: Karuah Quarry
Month: September 2021

| September 2022 | | | | | | | | | | | | | | |
|---|-----|------------------|------------------|------------------|-------------------|------------------|------------------|-----------------------|------------------------|----------------------|------------------|---------------------|-------------------|---|
| Date | Day | Temperature @ 2m | | | Temperature @ 10m | | | Winds | | | Solar Radiation | | Rain ¹ | |
| | | Max ¹ | Min ¹ | Ave ¹ | Max ¹ | Min ¹ | Ave ¹ | Max Gust ¹ | Ave Speed ¹ | Dir Ave ¹ | Max ¹ | Ave ¹ | | |
| | | °C | °C | °C | °C | °C | °C | km/h | km/h | deg | W/m ² | W/m ² | | |
| 1 | Wed | 27.0 | 5.8 | 17.4 | 23.6 | 7.3 | 17.8 | 27.2 | 4.2 | 133 | 619.2 | 165.7 | | |
| 2 | Thu | 24.5 | 11.3 | 18.1 | 22.9 | 13.0 | 18.2 | 34.3 | 6.5 | 106 | 740.8 | 157.6 | | |
| 3 | Fri | 24.9 | 11.3 | 17.4 | 23.7 | 12.9 | 17.6 | 27.2 | 5.2 | 123 | 610.0 | 166.4 | | |
| 4 | Sat | 27.4 | 10.2 | 18.5 | 25.1 | 11.5 | 18.1 | 24.9 | 3.4 | 165 | 695.8 | 131.8 | | |
| 5 | Sun | 18.9 | 12.0 | 12.7 | 17.8 | 12.3 | 12.9 | 41.4 | 8.7 | 263 | 720.8 | 97.5 | 3.8 | |
| 6 | Mon | 20.3 | 8.1 | 13.2 | 17.8 | 9.0 | 13.2 | 40.2 | 7.2 | 219 | 789.2 | 167.4 | | |
| 7 | Tue | 23.8 | 4.4 | 13.7 | 22.5 | 5.4 | 13.9 | 31.9 | 4.2 | 230 | 658.3 | 172.8 | 0.2 | |
| 8 | Wed | 23.5 | 7.3 | 13.8 | 19.9 | 8.0 | 13.9 | 20.1 | 3.2 | 162 | 820.7 | 146.0 | | |
| 9 | Thu | 27.9 | 7.4 | 18.7 | 26.5 | 8.3 | 20.0 | 30.8 | 5.3 | 233 | 712.5 | 183.4 | | |
| 10 | Fri | 28.9 | 10.2 | 18.3 | 27.3 | 13.2 | 18.0 | 30.8 | 4.8 | 228 | 670.8 | 185.8 | | |
| 11 | Sat | 29.7 | 10.0 | 17.5 | 28.6 | 9.8 | 18.5 | 17.8 | 2.8 | 149 | 664.9 | 187.3 | | |
| 12 | Sun | 31.1 | 9.5 | 20.3 | 29.5 | 12.1 | 20.7 | 41.4 | 7.0 | 180 | 754.9 | 169.9 | | |
| 13 | Mon | 21.3 | 12.5 | 13.3 | 18.2 | 14.4 | 12.8 | 28.4 | 6.4 | 193 | 907.4 | 90.8 | | |
| 14 | Tue | 12.8 | 9.9 | 10.7 | 12.2 | 9.9 | 10.8 | 31.9 | 5.7 | 223 | 759.9 | 60.3 | 39.4 | |
| 15 | Wed | 16.9 | 8.7 | 11.9 | 16.0 | 9.0 | 11.8 | 35.5 | 5.4 | 196 | 554.1 | 81.8 | 44.6 | |
| 16 | Thu | 15.6 | 9.5 | 9.9 | 15.6 | 9.5 | 10.3 | 10.6 | 1.7 | 192 | 915.8 | 97.5 | 11.4 | |
| 17 | Fri | 22.7 | 5.0 | 16.3 | 20.8 | 5.7 | 16.4 | 20.1 | 3.7 | 144 | 775.8 | 200.1 | 2.6 | |
| 18 | Sat | 29.2 | 12.5 | 17.9 | 27.5 | 13.3 | 18.4 | 37.9 | 5.6 | 231 | 929.1 | 128.4 | 0.2 | |
| 19 | Sun | 24.2 | 8.0 | 13.8 | 23.1 | 9.0 | 14.0 | 21.3 | 3.2 | 186 | 740.8 | 212.4 | | |
| 20 | Mon | 27.0 | 6.4 | 17.2 | 25.6 | 7.3 | 17.4 | 36.7 | 6.5 | 204 | 739.1 | 213.2 | | |
| 21 | Tue | 17.2 | 9.2 | 10.5 | 15.2 | 10.3 | 10.5 | 58.0 | 7.9 | 203 | 969.1 | 105.8 | | |
| 22 | Wed | 18.9 | 7.7 | 11.4 | 17.2 | 8.6 | 11.5 | 22.5 | 3.3 | 201 | 774.1 | 132.8 | 14.6 | |
| 23 | Thu | 26.7 | 5.3 | 15.8 | 25.5 | 6.2 | 16.4 | 24.9 | 3.6 | 203 | 735.8 | 213.1 | | |
| 24 | Fri | 27.1 | 8.5 | 16.8 | 25.9 | 9.7 | 17.7 | 35.5 | 5.0 | 206 | 732.4 | 211.0 | 0.2 | |
| 25 | Sat | 26.3 | 8.4 | 16.7 | 24.0 | 9.6 | 16.2 | 40.2 | 9.8 | 159 | 731.6 | 191.3 | | |
| 26 | Sun | 17.8 | 11.7 | 11.6 | 16.0 | 11.9 | 11.7 | 30.8 | 4.3 | 166 | 882.5 | 104.1 | 1.6 | |
| 27 | Mon | 20.5 | 5.7 | 13.9 | 18.2 | 6.1 | 14.3 | 26.0 | 4.5 | 127 | 1012.5 | 162.3 | 3.4 | |
| 28 | Tue | 25.0 | 9.4 | 17.0 | 22.8 | 11.0 | 16.9 | 29.6 | 4.6 | 132 | 733.3 | 203.2 | 0.2 | |
| 29 | Wed | 24.9 | 10.4 | 16.7 | 22.9 | 11.4 | 16.7 | 18.9 | 2.7 | 136 | 994.2 | 122.6 | | |
| 30 | Thu | 27.0 | 12.1 | 18.0 | 24.1 | 12.9 | 18.0 | 29.6 | 3.6 | 161 | 931.6 | 151.7 | 5.8 | |
| | | | | | | | | | | | | | | |
| Ave or Total | | 23.6 | 8.9 | 15.3 | 21.9 | 10.0 | 15.5 | 30.2 | 5.0 | 181.8 | 775.9 | 153.8 | 128.0 | |
| High | | 31.1 | 12.5 | 20.3 | 29.5 | 14.4 | 20.7 | 58.0 | 9.8 | | 1012.5 | 213.2 | 44.6 | |
| Low | | 12.8 | 4.4 | 9.9 | 12.2 | 5.4 | 10.3 | 10.6 | 1.7 | | 554.1 | 60.3 | | |
| Notes: 1. Values are for the 24 hour period from 9am to 9am next day. | | | | | | | | | | | | No. rain days >1mm: | | 9 |
| | | | | | | | | | | | | | | |

Figure 2 Weather Summary September 2021

Wind Rose Report for: Karuah East - 15 Min Data

WDIR Vector Wind Dir and VWSP Vector Wind Spd in km/h

Period: 2021-09-01 00:00 to 2021-09-30 23:59

Direction the Wind is Blowing To

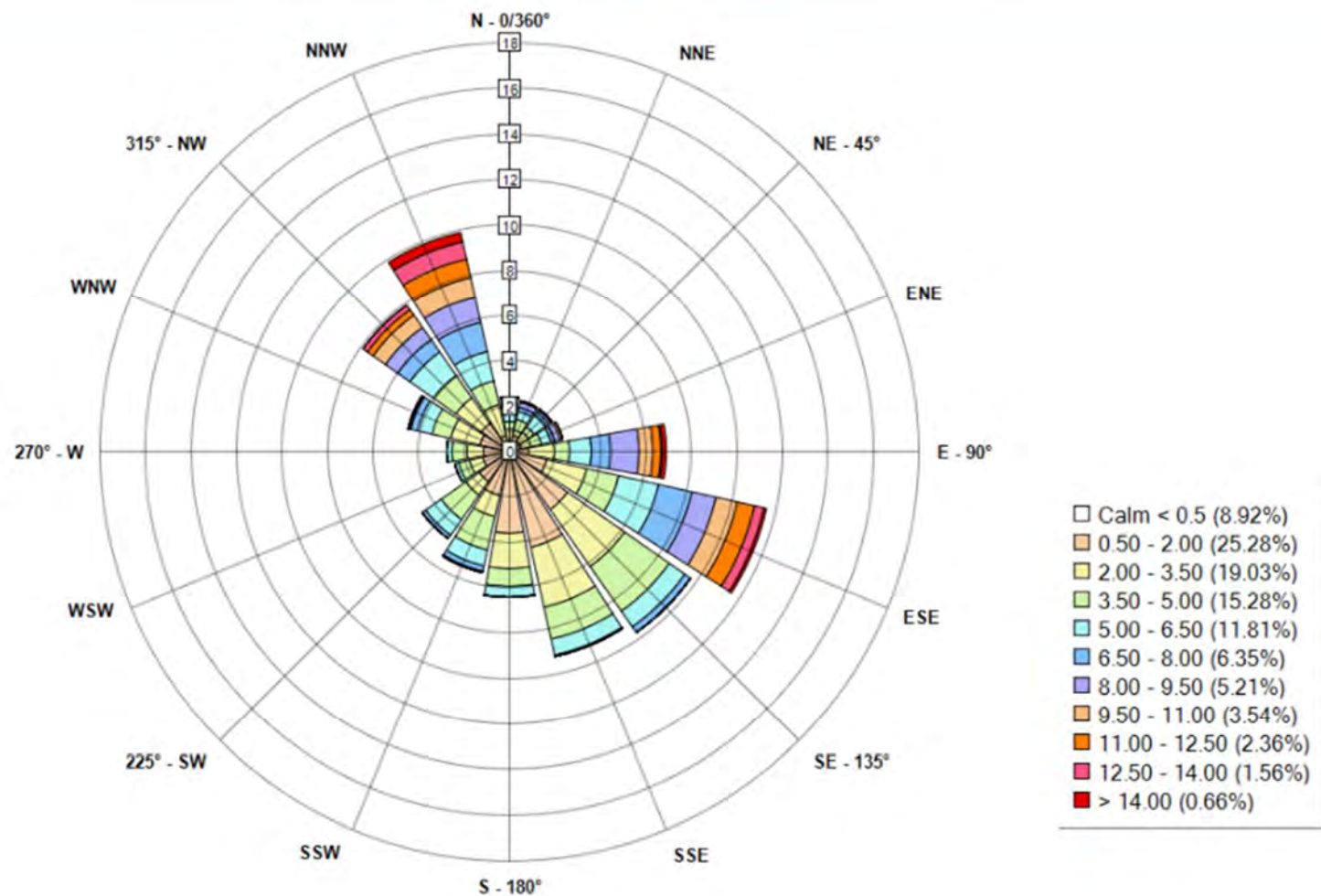


Figure 3 Wind rose September 2021

7 REPORTING

7.1 COMMUNITY CONSULTATIVE COMMITTEE

The purpose of a Community Consultative Committee (CCC) is to provide a forum for discussion between a proponent (KEQPL) and representatives of the community, stakeholder groups and the local council on issues directly relating to a specific State Significant Project (KEQ).

The KEQ CCC generally meets biannually (twice a year). Meeting minutes can be found at Hunter Quarries website <<https://hunterquarries.com.au/>>.

The first meeting of 2021 was held at the Quarry 29 March 2021 and included a site inspection.

An extraordinary meeting was held 5 July 2021 to discuss *Project Approval 09_0175 Modification 9 (Extended operating hours)*.

The CCC meeting scheduled for September 2021 has been postponed due to the current COVID-19 pandemic.

7.2 PRODUCTION

For the month of September 59,109 tonnes of various quarry products were produced.

7.3 NON-COMPLIANCE

There were nil non-compliance events during September 2021.

7.4 COMPLAINTS

There were no complaints received during September 2021.

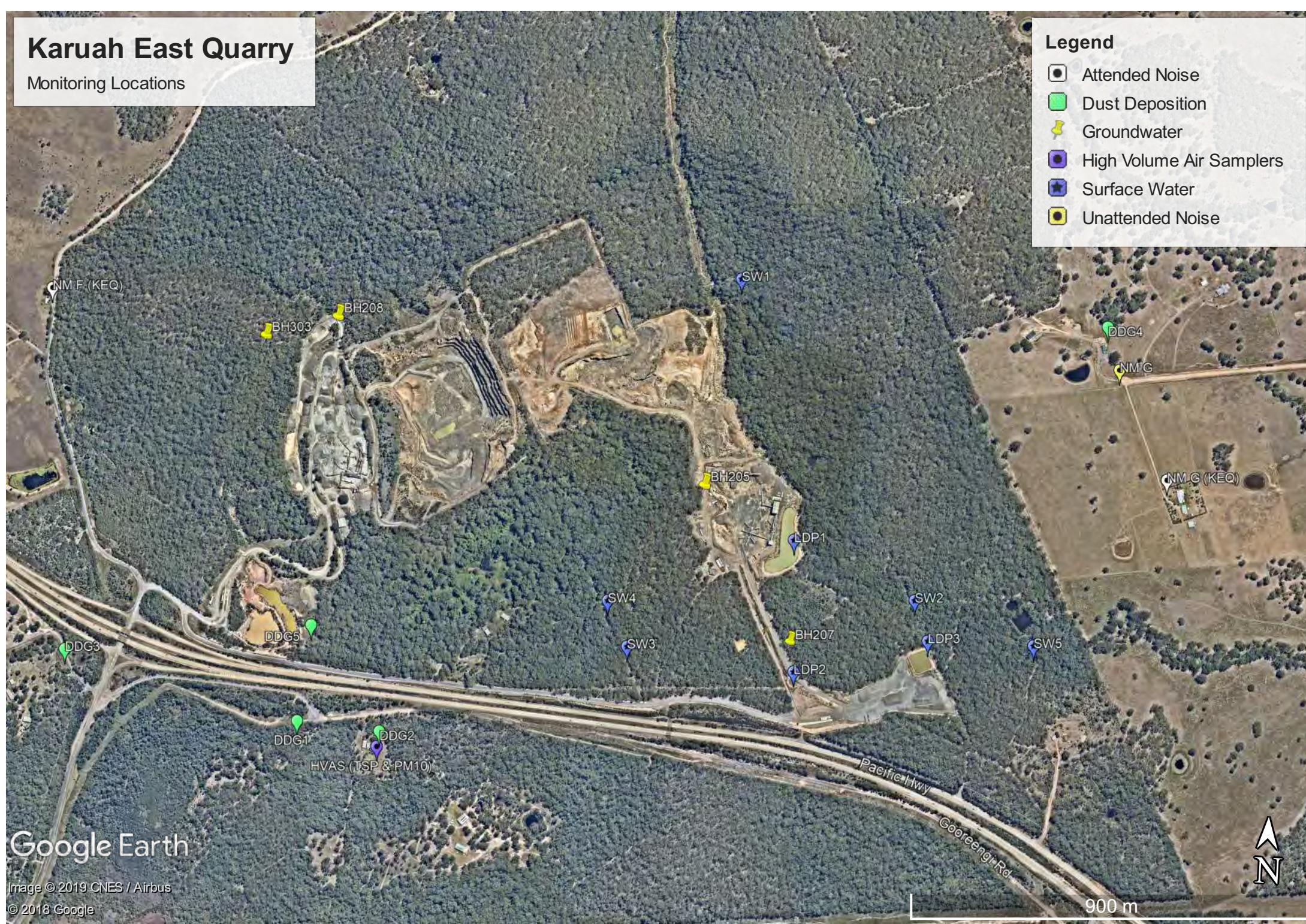
Appendix 1 – Monitoring Locations

Karuah East Quarry

Monitoring Locations

Legend

- Attended Noise
- Dust Deposition
- Groundwater
- High Volume Air Samplers
- Surface Water
- Unattended Noise



Google Earth

Image © 2019 CNES / Airbus
© 2018 Google

900 m