



Environmental Monitoring Report

February 2021

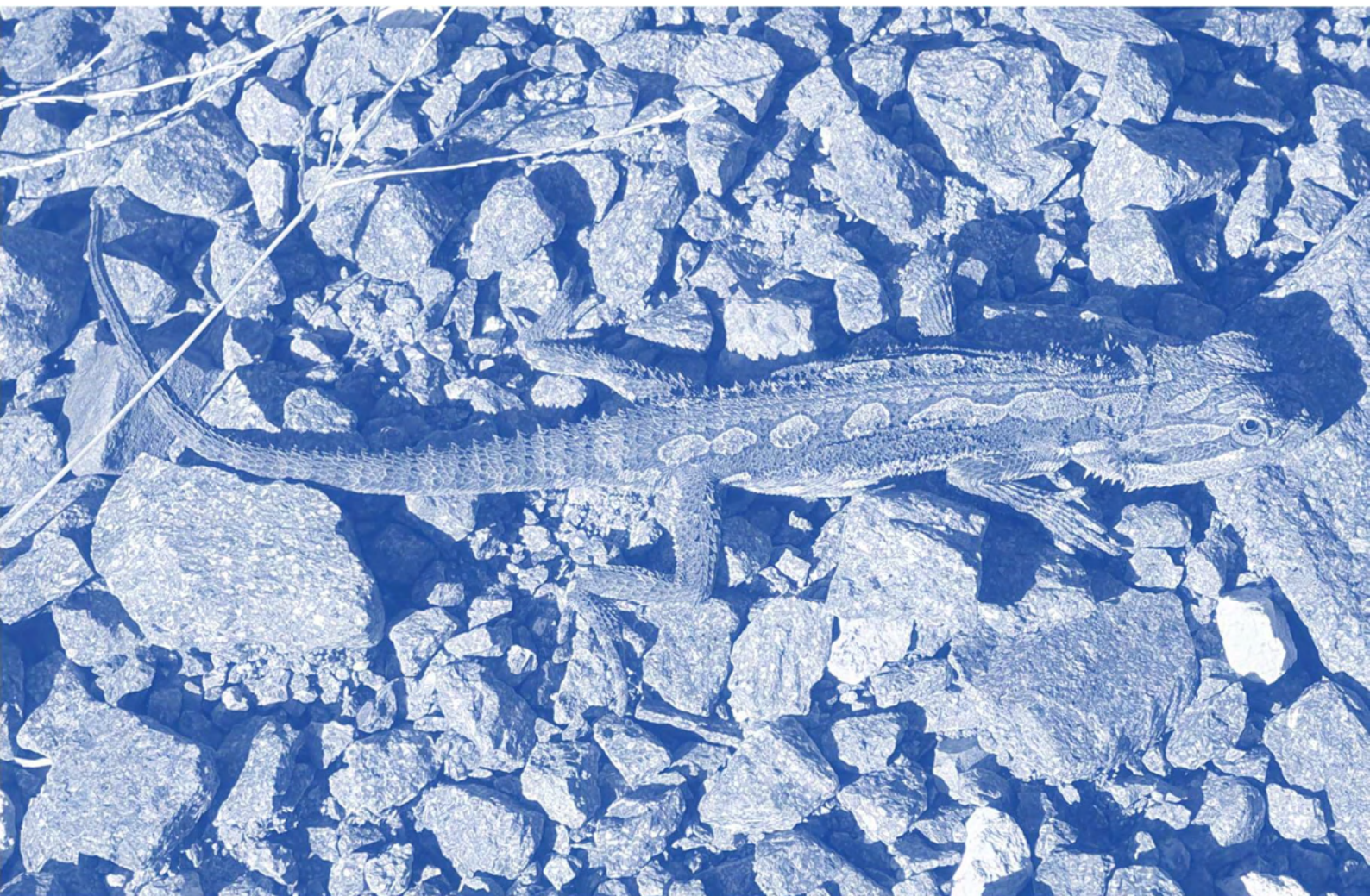


Table of Contents

1	Introduction	2
2	Air Quality Monitoring	3
2.1	Deposited Dust Monitoring	3
2.2	High Volume Air Sampling	4
3	Blast Monitoring	6
4	Noise Monitoring	7
4.1	Attended Monitoring	7
4.2	Unattended Noise Monitoring	8
4.3	Noise Monitoring Summary	8
5	Surface Water Monitoring	9
6	Reporting.....	10
6.1	Incident	10
6.2	Non-Compliance	10
6.3	Complaints	10
Table 1 Environmental Protection Licence 20611 information		2
Table 2 Project Approval 09_0175 information.....		2
Table 3 PA 09_0175 Long Term Assessment Criteria for Deposited Dust		3
Table 4 PA 09_0175 Long Term Impact Assessment Criteria for Particulate Matter		3
Table 5 PA 09_0175 Short Term impact Assessment Criterion for Particulate Matter		3
Table 6 Air quality monitoring locations.....		3
Table 7 Deposited dust monitoring results.....		4
Table 8 High Volume Air Sampling ($\mu\text{g}/\text{m}^3$) results.....		4
Table 9 EPL 20611 Condition M7.1 Blasting		6
Table 10 Blast monitoring results		6
Table 11 Operational Noise Criteria (dB(A) $\text{LA}_{\text{eq}(15\text{min})}$)		7
Table 12 Noise monitoring locations		7
Table 13 Attended noise monitoring results		7
Table 14 Unattended noise monitoring results		8
Table 16 EPL20611 - Pollutant concentration limits.....		9

1 INTRODUCTION

This report has been completed to meet the requirements of Section 66(6) of the *Protection of the Environment Operations Act 1997* and the NSW Environmental Protection Authority's (EPA) *Requirements for Publishing Pollution Monitoring Data* (EPA, 2013). This report summarises the required monitoring data under *Environmental Protection Licence 20611* (the EPL) (see Table 1) and *Project Approval 09_0175* (the Consent) (see Table 2) for Karuah East Quarry (the Quarry).

Table 1 Environmental Protection Licence 20611 information

Environmental Protection Licence Number	20611
Licensee's Name	Karuah East Quarry Pty Limited
Licensee's Address	Licensee Postal Address: PO Box 3284 Thornton NSW 2322. Premises Address: Karuah East Quarry, Blue Rock Close, Karuah NSW 2324.
Link to Full Licence on the EPA Website	EPL 20611

Table 2 Project Approval 09_0175 information

Development Application	PA 09_0175
Applicant	Karuah East Quarry Pty Limited
Approval Authority	Minister for Planning
Land	Lot 12 DP 1024564; Lot 13 DP 1024564; Lot 202 DP 1042537; Lot 26 DP1024341; Lot 27 DP 1024341; Lot 16 DP 1024564; Lot 17 DP 1024564

A summary of the environmental monitoring data for February 2021 is covered in this report.

Tables throughout this report provide key monitoring information from the EPL and the Consent, such as:

- location of monitoring;
- pollutant;
- unit of measurement; and
- monitoring frequency required.

Monitoring locations are identified in Appendix 1.

2 AIR QUALITY MONITORING

Dust emissions generated by the Quarry operation must not cause additional exceedances of ambient air quality criterion outlined in *Schedule 3, Condition 13* of the Consent (see Table 3, Table 4 and Table 5). Deposited dust and TSP/PM₁₀ monitoring is undertaken at the locations listed in Table 6.

Table 3 PA 09_0175 Long Term Assessment Criteria for Deposited Dust

Pollutant	Averaging Period	Maximum Increase in Deposited Dust Level ¹	Maximum Total Deposited Dust Level ¹
Deposited dust	Annual	2 g/m ² /month	4 g/m ² /month

Note 1: Deposited dust is assessed as insoluble solids as defined by AS 3580.10.1-2003.

Table 4 PA 09_0175 Long Term Impact Assessment Criteria for Particulate Matter

Pollutant	Average period	Criterion
Total suspended particulate (TSP) matter	Annual	90 µg/m ³
Particulate matter <10 µm (PM ₁₀)	Annual	30 µg/m ³

Table 5 PA 09_0175 Short Term impact Assessment Criterion for Particulate Matter

Pollutant	Averaging period	Criterion
Particulate matter <10 µm (PM ₁₀)	24 hour	50 µg/m ³

Table 6 Air quality monitoring locations

Site ID	EPL ID	Location	Address	GPS Coordinates
DDG 1	MP 4	South-West of Karuah East Quarry	5760 Pacific Hwy, Karuah NSW 2324	32°38'04"S 151°59'58"E
DDG 2	MP 5	South-West of Karuah East Quarry	5770 Pacific Hwy, Karuah NSW 2324	32°38'02"S 152°00'09"E
DDG 3	MP 6	South-West of Karuah East Quarry	DP 1024341, Karuah	32°37'57"S 151°59'41"E
DDG 4	MP 7	East of Karuah East Quarry	21 Halloran Rd North Arm Cove NSW 2324	32° 37' 30.87"S 152°01'10.18"E
DDG 5	MP 8	South-West of Karuah East Quarry	Lot 21 DP 1024341 Karuah NSW 2324	32° 37' 55.33"S 152°00'2.74"E
HVAS (TSP/PM ₁₀)	MP 9	South-West of Karuah East Quarry	5770 Pacific Hwy, Karuah NSW 2324	32°38'03"S 152°00'09"E

All dust monitoring is undertaken in accordance with the *Approved Methods of Sampling and Analysis of Air Pollutants in NSW* (EPA, 2007).

2.1 DEPOSITED DUST MONITORING

Deposited dust results for February 2021 and the year to date (YTD) from the Consent anniversary (1 January) are shown in Table 7.

Table 7 Deposited dust monitoring results

Date On	Date Off	DDG 1	DDG 2	DDG 3	DDG 4	DDG 5
12/03/2020	9/04/2020	0.8	0.8	0.5	0.1	0.5
9/04/2020	7/05/2020	1.2	0.9	1.0	-1	1.3
7/05/2020	4/06/2020	0.2	0.3	0.3	0.7	0.1
4/06/2020	2/07/2020	0.1	0.2	0.3	0.3	0.3
2/07/2020	31/07/2020	0.2	<0.1	0.2	0.6	<0.1
31/07/2020	1/09/2020	0.4	0.2	0.4	1.0	<0.1
1/09/2020	1/10/2020	0.6	0.5	0.4	1.0	1.0
1/10/2020	2/11/2020	0.2	<0.1	1.3	0.7	0.6
2/11/2020	3/12/2020	3.2	2.3	0.8	0.7	4.7
3/12/2020	4/01/2021	0.3	0.5	<0.1	0.4	1.5
4/01/2021	4/02/2021	1.5	0.9	0.7	0.3	1.2
4/02/2021	5/03/2021	0.4	0.4	0.7	0.2	1.6
YTD average		0.8	0.6	0.6	0.5	1.1

Note ¹: DDG4 was not able to be analysed for period 9/4/2020 to 7/05/2020 due to sample jar breaking during collection and transportation to the laboratory.

Monitoring results indicate that for the period 4 February 2021 to 5 March 2021 the insoluble solid levels recorded at DDG 1 to DDG 4 monitoring locations were below the project criterion of 4 g/m²/month.

2.2 HIGH VOLUME AIR SAMPLING

The TSP and PM₁₀ results for February 2021, the report average and a rolling annual average are shown in are shown in Table 8. Figure 1 illustrates the year-to-date results for HVAS monitoring.

Table 8 High Volume Air Sampling (µg/m³) results

Run Date	HVAS TSP (µg/m ³)	HVAS PM ₁₀ (µg/m ³)
2/02/2021	17	11
8/02/2021	26	16
14/02/2021	26	15
20/02/2021	10	10
26/02/2021	31	20
24hr Average Criteria¹	N/A	50
Annual Average Criteria¹	90	30
Progressive Annual Average²	20.1	13.4

Note: ¹ Criteria as specified in PA 09_0175.

² The progressive annual average is from 1/01/2020 to 28/02/2021, this is not a measure of compliance.

All HVAS monitoring results, to the end of February 2021 were compliant with the long term and short term impact assessment criteria outlined in *Schedule 3 Condition 13* of the Consent (see Table 3, Table 4 and Table 5).

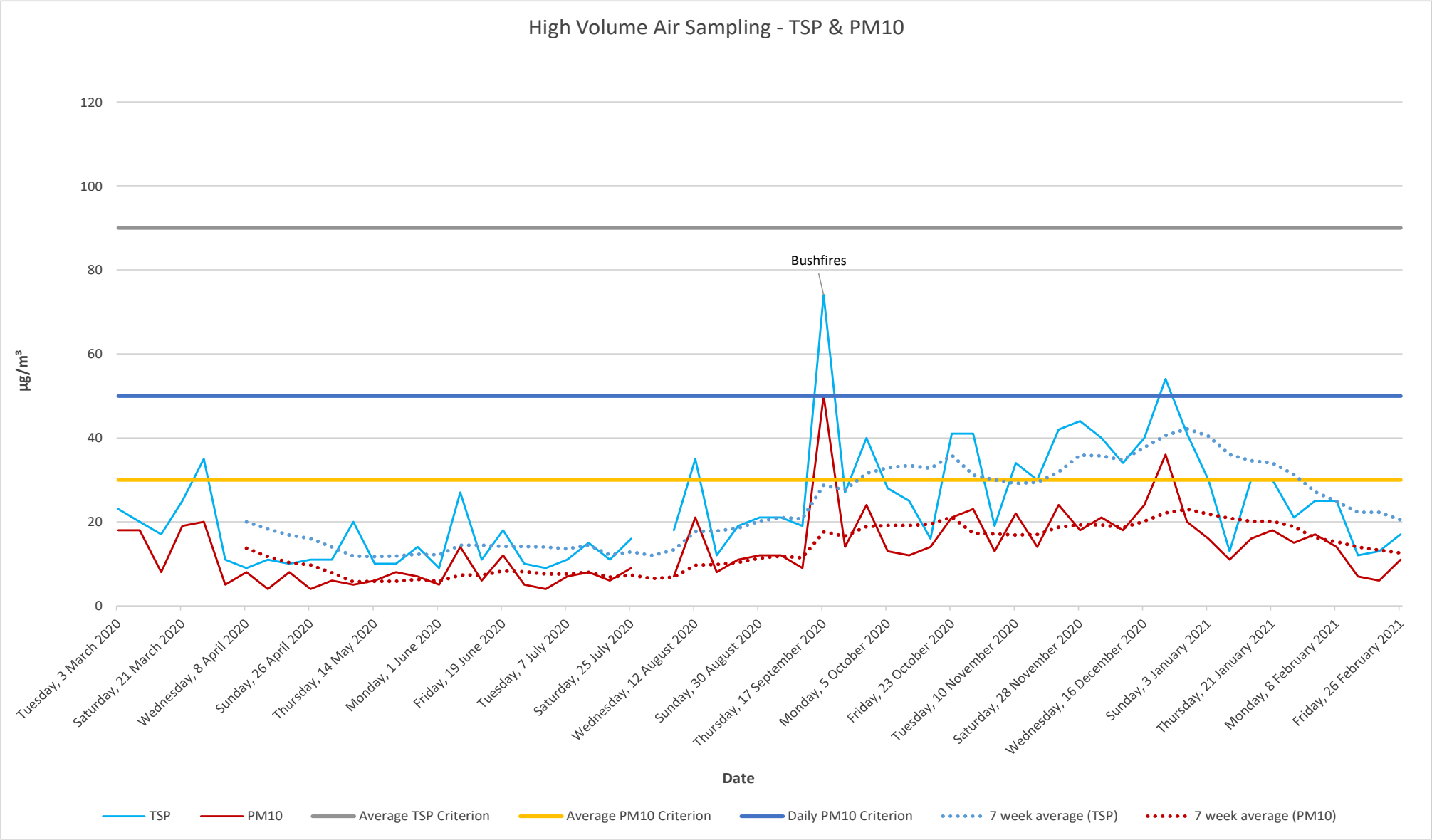


Figure 1 High Volume Air Sampling: Year-to-date results

3 BLAST MONITORING

The following conditions from the EPL refer to blast management:

L5.1 Blasting in or on the premises must only be carried out between the hours of 9:00 am and 4:00 pm Monday to Friday. No blasting is permitted on Saturdays, Sundays or public holidays. Blasting outside of the hours specified in this condition can only take place with the written approval of the EPA.

L5.2 Blasting is not permitted simultaneously with adjacent quarry(s).

*L5.3 The airblast overpressure level from blasting operations in or on the premises must not exceed:
a) 115 dB (Lin Peak) for more than 5% of the total number of blasts during each reporting period; and
b) 120 dB (Lin Peak) at any time,
at monitoring point 11 detailed in Condition P1.4.*

*L5.4 The ground vibration peak particle velocity from blasting operations carried out in or on the premises must not exceed:
a) 5 mm/second for more than 5% of the total number of blasts during each reporting period; and
b) 10 mm/second at any time,
at monitoring point 11 detailed in Condition P1.4.*

L5.5 Error margins associated with any monitoring equipment used to measure airblast overpressure or peak particle velocity are not to be taken into account in determining whether or not the limit has been exceeded.

L5.6 The airblast overpressure and ground vibration levels in the conditions above do not apply at noise sensitive locations that are owned by the licensee or subject to a private agreement, relating to airblast overpressure and ground vibration levels, between the licensee and land owner.

L5.7 Offensive blast fume must not be emitted from the premises.

M7.1 To determine compliance with Blast Limit conditions of this licence:

*a) Airblast overpressure and ground vibration levels must be measured and electronically recorded for monitoring point 11 for the parameters specified in Column 1 of the table below; and
b) The licensee must use the units of measure, sampling method, and sample at the frequency specified opposite in the other columns.*

Table 9 EPL 20611 Condition M7.1 Blasting

Parameter	Units of Measure	Frequency	Sampling Method
Airblast Overpressure	Decibels (Linear Peak)	All blasts	Australian Standard AS 2187.2-2006
Ground Vibration Peak Particle Velocity	Millimetres/second	All blasts	Australian Standard AS 2187.2-2006

There were two blasts conducted in February 2021, see Table 10 for monitoring results.

Table 10 Blast monitoring results

Date	Time	Overpressure (dB(L))	Vibration (mm/s)
Thursday, 4 February 2021	1:29 PM	Nil Trigger	Nil Trigger
Thursday, 18 February 2021	12:57 PM	Nil Trigger	Nil Trigger

The monitoring results demonstrate compliance with blasting criteria of the Consent and the EPL.

4 NOISE MONITORING

Noise monitoring is undertaken in accordance with the approved *Noise Management Plan*, the Consent (*Schedule 3, condition 3 to 7*) and the EPL (*conditions L4 and M8*).

As the Quarry is operational with no construction activities being completed, construction noise is not being considered. Table 11 summarises the operational noise criteria.

Noise generated by the Quarry operation must not exceed the criteria specified in *Schedule 3, Condition 14* of the Consent (see Table 11) at the locations identified in Table 12.

Table 11 Operational Noise Criteria (dB(A) LA_{eq}(15min))

Location	Criteria (day ¹)
Residence on Lot 11 DP10244564	43
A	40
B	37
G	38
All other residence	35

Note 1: A day is defined as the period from 7am to 6pm Monday to Saturday and 8am to 6pm Sunday and Public Holidays.

In accordance with the Consent, a noise monitoring program has been implemented. A summary of this monitoring program is outlined in Table 12

Table 12 Noise monitoring locations

Monitoring Method	Location	Frequency	Criteria
Attended noise monitoring	A, B, F, G	Quarterly	Refer to Table 11
Unattended noise monitoring	G	Quarterly	Refer to Table 11

4.1 ATTENDED MONITORING

Table 13 contains the results for attended noise monitoring undertaken in February.

Table 13 Attended noise monitoring results

Location	Date/Start Time/ Weather	Primary Noise Descriptor (dBA re 20 µPa)					Description of Noise Emissions and Typical Maximum Noise Levels (dBA)
		LA _{max}	LA1	LA10	LA90	LA _{eq}	
A	23/02/2021 10:23 AM Calm	85	60	57	52	55	Birds 50-55 Pacific Highway 55 Karuah East Quarry inaudible
B	23/02/2021 10:53 AM Calm	86	71	67	59	64	Pacific Highway 60-65 Karuah East Quarry inaudible
F	23/02/2021 11:28 AM Calm	88	53	57	53	56	Birds and insects 40 Local traffic 65 Pacific Highway 55

							Karuah East Quarry inaudible
G	23/02/2021 12:07 PM Calm	75	57	56	50	54	Birds and insects 40-55 Pacific Highway 50 Karuah East Quarry inaudible

The results of the attended monitoring (Table 13) show ambient noise levels include noise sources such as traffic from the nearby Pacific Highway and wildlife such as insects and birds. The Quarry operation was inaudible at all locations.

4.2 UNATTENDED NOISE MONITORING

Table 14 contains the results for unattended noise monitoring undertaken in February.

Table 14 Unattended noise monitoring results

INP Period	L _{A1}	L _{A10}	L _{A90}	L _{AEQ}
Day	59	54	48	53
Evening	62	59	52	57
Night	58	56	50	54

4.3 NOISE MONITORING SUMMARY

The attended noise monitoring conducted during February 2021 identified that the Quarry was not audible at Location A, B, F and G. Therefore, the Quarry is determined to be complaint for the monitoring completed in February 2021.

5 SURFACE WATER MONITORING

5.1 DISCHARGE MONITORING

Condition L2 of the EPL outlines the requirement to monitor water discharges from the Quarry via the licensed discharge points (LDP1, LDP2 and LDP3), see Table 15.

Table 15 EPL20611 - Pollutant concentration limits

Pollutant	Units of Measure	Concentration Limit
Oil and Grease	Visible	5 &/or non-visible
pH	pH units	6.5 – 8.5
Total suspended solids	Milligrams per litre	40

There were no water discharges during February 2021

6 REPORTING

6.1 INCIDENT

There were nil environmental incidents during February 2021 to report.

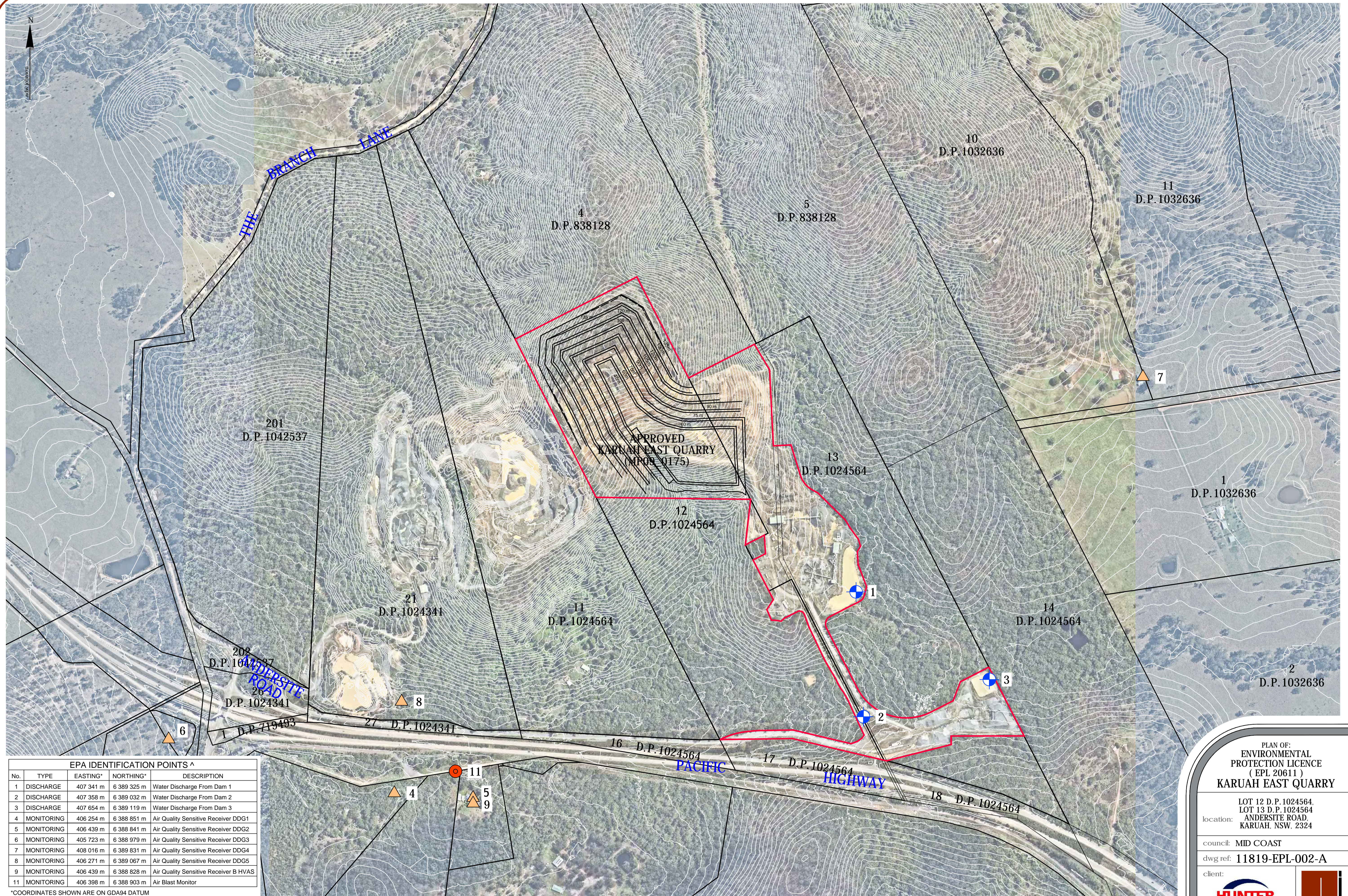
6.2 NON-COMPLIANCE

There were nil non-compliance events during February 2021 to report.

6.3 COMPLAINTS


There were nil complaints received during February 2021.

Appendix 1 – Monitoring Locations



EPA IDENTIFICATION POINTS ^				
No.	TYPE	EASTING*	NORTHING*	DESCRIPTION
1	DISCHARGE	407 341 m	6 389 325 m	Water Discharge From Dam 1
2	DISCHARGE	407 358 m	6 389 032 m	Water Discharge From Dam 2
3	DISCHARGE	407 654 m	6 389 119 m	Water Discharge From Dam 3
4	MONITORING	406 254 m	6 388 851 m	Air Quality Sensitive Receiver DDG1
5	MONITORING	406 439 m	6 388 841 m	Air Quality Sensitive Receiver DDG2
6	MONITORING	405 723 m	6 388 979 m	Air Quality Sensitive Receiver DDG3
7	MONITORING	408 016 m	6 389 831 m	Air Quality Sensitive Receiver DDG4
8	MONITORING	406 271 m	6 389 067 m	Air Quality Sensitive Receiver DDG5
9	MONITORING	406 439 m	6 388 828 m	Air Quality Sensitive Receiver B HVAS
11	MONITORING	406 398 m	6 388 903 m	Air Blast Monitor

*COORDINATES SHOWN ARE ON GDA94 DATUM

ver.	date	comment	surveyed	drawn	checked	pm	co-ordinate information		level information		scale (A1 original size)	page
A	11.06.2020	INITIAL EPL PLAN	--	Z.J.	M.R.	M.R.	CO-ORDINATE SYSTEM: M.G.A. ZONE 56 GDA94 ORIGIN OF CO-ORDINATES: P.M.		DATUM: A.H.D. ORIGIN OF LEVELS: LIDAR DATA	CONTOUR INTERVAL: 2.0 m		1 OF 1
project management		civil engineering		infrastructure		superintendency		economic analysis		social impact	town planning	surveying

^ MONITORING POINTS HAVE BEEN PROVIDED BY HUNTER QUARRIES PTY LTD.
REFER TO PLAN 'KARUAH HARD ROCK QUARRY ENVIRONMENTAL MONITORING LOCATIONS - FIGURE 1'
BY SLR CONSULTING AUSTRALIA - REFERENCE: 633.HQP00.0030 DATED 23/06/2014.

PLAN OF:
ENVIRONMENTAL
PROTECTION LICENCE
(EPL 20611)
KARUAH EAST QUARRY

location: LOT 12 D.P.1024564,
LOT 13 D.P.1024564
ANDERSITE ROAD,
KARUAH, NSW, 2324

council: MID COAST

dwg ref: 11819-EPL-002-A

client:



central coast office ph: (02) 4305 4300
hunter office ph: (02) 4978 5100
sydney office ph: (02) 8046 7411

www.adwjohnson.com.au